



SETTING SOFTWARE INSTRUCTIONS

## INTEGRATED VOICE EVACUATION SYSTEM

### VM-3000 Series

VOICE ALARM SYSTEM AMPLIFIER 240W	VM-3240VA
VM EXTENSION AMPLIFIER 240W	VM-3240E
REMOTE MICROPHONE	RM-200M

for Mass Notification Installations

Thank you for purchasing TOA's VM-3000 Series System.  
Please carefully follow the instructions in this manual to ensure long, trouble-free use of your equipment.

TOA Corporation

# TABLE OF CONTENTS

<b>1. SOFTWARE OUTLINE</b> .....	4
<b>2. NOTES ON PERFORMING SETTINGS</b>	
2.1. System Requirements .....	5
2.2. Notes	
2.2.1. Displays .....	5
2.2.2. Window screens.....	5
<b>3. SOFTWARE SETUP</b>	
3.1. Setting Software Installation .....	6
3.2. Uninstallation.....	8
3.3. Update.....	9
<b>4. RUNNING THE VM-3000 SETTING SOFTWARE</b> .....	10
<b>5. SETTING ITEMS</b> .....	11
5.1. Menu Structure .....	12
5.2. Menu Bar Items & Explanations.....	13
<b>6. SYSTEM SETTINGS</b> .....	14
6.1. System Type Settings .....	15
6.2. Setting the Number of VM-3000Es .....	16
6.3. Settings for RM-200M Remote Microphone .....	17
6.4. VM-3000VA Settings.....	18
6.4.1. Audio input settings.....	19
6.4.2. Audio output settings .....	20
6.4.3. Control input settings .....	21
6.4.4. Control output settings .....	22
6.4.5. VM-3000VA/VM-3000E setting screen changeover .....	23
6.4.6. Returning to the system setting screen from the VM-3000VA setting screen .....	24
6.5. VM-3000E Settings .....	25
6.5.1. Audio output setting .....	26
6.5.2. Control input settings .....	27
6.5.3. Control output settings.....	28
6.5.4. VM-3000VA/VM-3000E setting screen changeover .....	29
6.5.5. Returning to the system setting screen from the VM-3000E setting screen.....	30
6.6. Local Input Setting .....	31
<b>7. SURVEILLANCE SETTINGS</b> .....	32
7.1. Time/Interval Setting .....	33
7.2. Surveillance Group Settings.....	34
<b>8. PRIORITY SETTINGS</b> .....	37
8.1. General Broadcast Sound Source Priority Settings .....	38
8.2. Emergency Sound Source Priority Display .....	40
<b>9. ZONE SETTINGS</b> .....	42

<b>10. EVENT SETTINGS</b> .....	43
10.1. General Control Input Settings .....	44
10.2. Emergency Control Input Settings .....	47
10.3. RM Function Key Settings.....	49
10.3.1. RM-200M settings.....	50
<b>11. LOG DISPLAY</b> .....	52
<b>12. ERROR LIST DISPLAY</b> .....	54
<b>13. MENU ITEM OPERATIONS FROM THE MENU BAR</b>	
13.1. Creating a New Setting File .....	55
13.2. Loading Set Files .....	57
13.3. Saving Set Files	
13.3.1. Overwriting an existing file .....	59
13.3.2. Saving new set files .....	60
13.4. Printing Set Data .....	62
13.5. Exporting Printed Data in CSV Format .....	64
13.6. Printing Remote Microphone Labels .....	66
13.7. Exiting Setting Software .....	68
13.8. Selecting the Setting Software Display Language .....	69
13.9. Network Settings between Setting Software and VM-3000VA.....	70
13.10. Transferring Data Edited by PC between the VM-3000VA and a PC	
13.10.1. Loading set VM-3000VA data into a PC .....	72
13.10.2. Writing PC-edited data into the VM-3000VA.....	73
13.11. Transferring EV Message Files between the VM-3000VA and a PC	
13.11.1. EV file registration screen transfer operation.....	74
13.11.2. Simultaneous EV message registration .....	78
13.11.3. Individual EV message file registration .....	78
13.11.4. Individual EV message file erasure.....	78
13.12. Setting Software Version Display.....	79

## **1. SOFTWARE OUTLINE**

This setting software is designed to be installed in a PC and used exclusively for performing the settings necessary for operating the VM-3000 system.

Settings are roughly divided into system configurations, failure detection points, broadcasting sound source priorities, broadcast zones, and function assignment to the control inputs and remote microphone keys. This software also features a Log function that integrates event log data from the VM-3240VA into a PC and displays such data, as well as an Error List function that shows discrepancies in set data.

Loading the PC-set data into the VM-3240VA allows the VM-3000 system to operate according to the configured settings.

## 2. NOTES ON PERFORMING SETTINGS

### 2.1. System Requirements

• OS:	Windows Vista, Windows XP SP2, 32-bit Windows 7
• CPU:	1 GHz or faster
• Memory:	1 GB or more
• LAN:	1 port

#### Note

Windows and Windows Vista are trademarks of Microsoft Corporation.

### 2.2. Notes

#### 2.2.1. Displays

The VM-3000 Setting Software creates window displays at a resolution of 1024 x 768 pixels. Setting the screen size to a lower resolution or resizing windows may cause a portion of display to be hidden or cut off.

#### 2.2.2. Window screens

The windows displayed by the VM-3000 Setting Software in this manual are examples and may vary somewhat depending on the specific environment of the PC used.

### 3. SOFTWARE SETUP

#### Notes

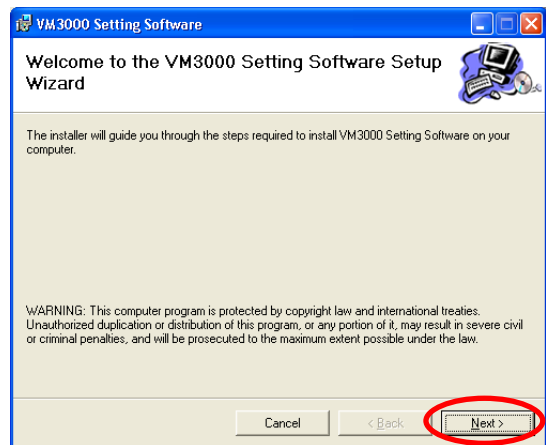
- Close all open applications before installing.
- To install the software, it is necessary to log in to the PC using an administrator account.

#### 3.1. Setting Software Installation

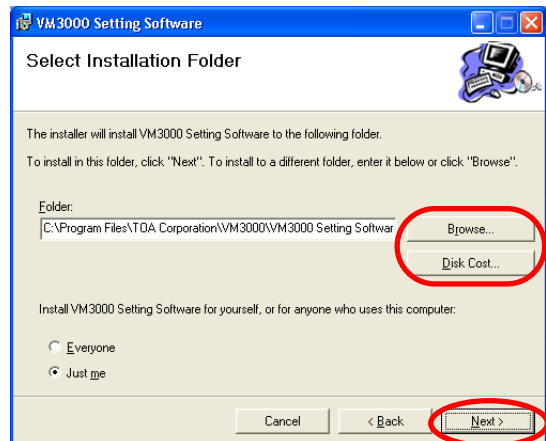
**Step 1.** Click on "setup.exe" in the setting software folder contained in the CD supplied with the VM-3240VA. The installation wizard screen is displayed.

#### Note

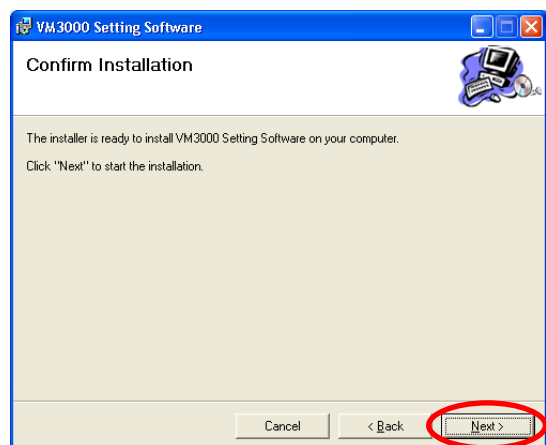
The installation wizard screen may not be displayed. In this case, read [the next page](#).



**Step 2.** Click the Next button. The Select Installation Folder screen is displayed.

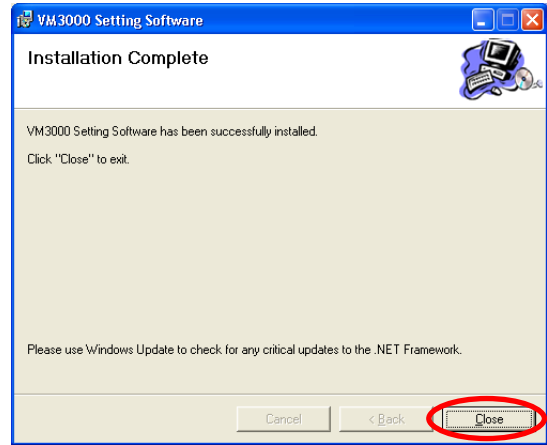


**Step 3.** Change the folder as needed, then click the Next button. The Confirm Installation dialog is displayed.



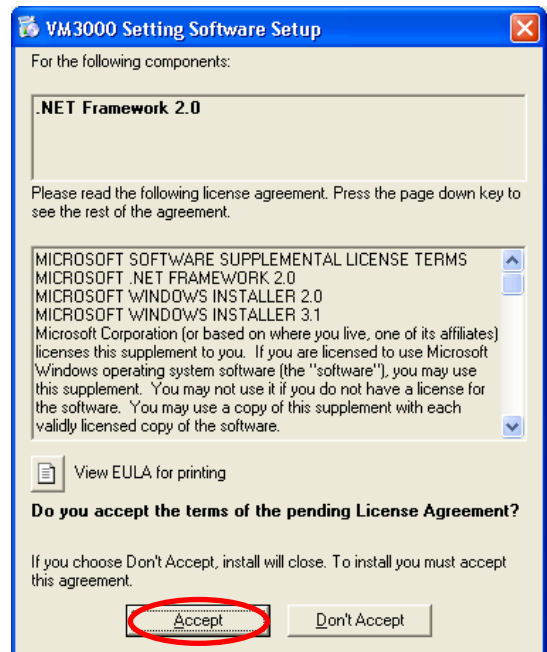
**Step 4.** Click the Next button to start installing the software.

**Step 5.** When the Installation Complete dialog is displayed, click the Close button to complete the installation.



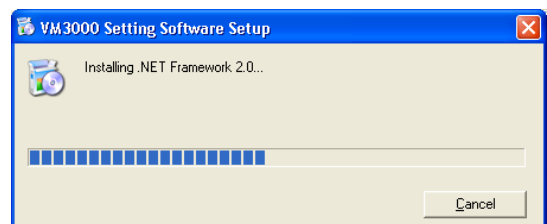
**[If no installation wizard screen is displayed]**

The screen at right may be displayed when the Step 1 is performed. In this case, install the software needed to run the VM-3000 Setting Software with the steps below.



**Step 1.** Click the Accept button.

Installation in progress screen is displayed.



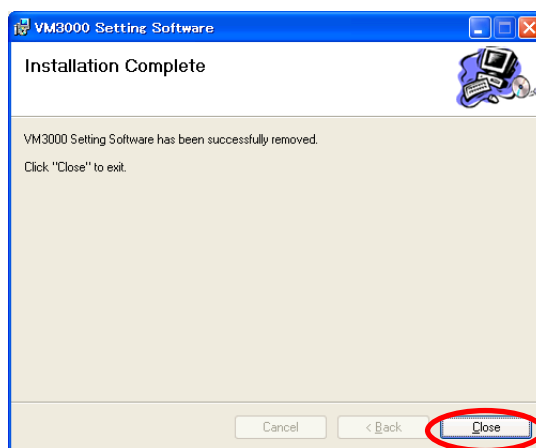
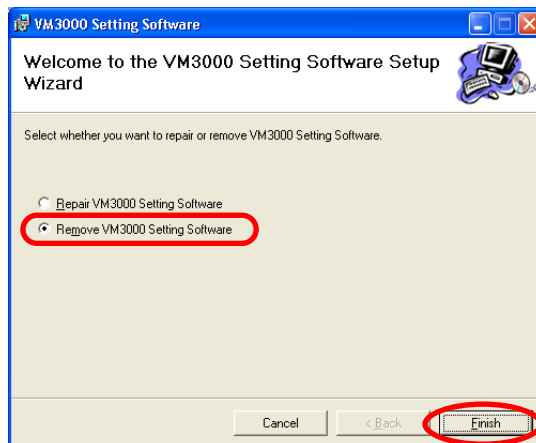
As the installation wizard screen is displayed after completion of installation, follow the steps shown on [the previous page](#).

## 3.2. Uninstallation

**Step 1.** Click on "setup.exe" in the setting software folder contained in the CD supplied with the VM-3240VA. The setup wizard screen is displayed.

**Step 2.** Select "Remove VM3000 Setting Software," and click the Finish button to start uninstalling the software.

**Step 3.** When the Installation Complete dialog is displayed, click the Close button to complete the uninstallation.



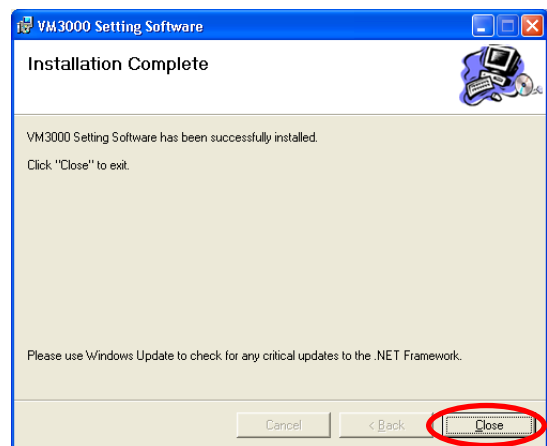
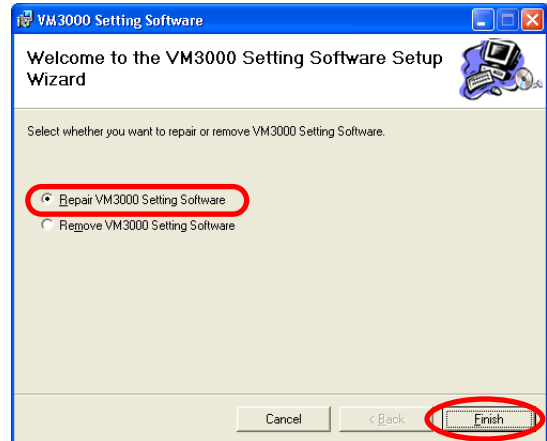


### 3.3. Update

**Step 1.** Click on "setup.exe" in the setting software folder contained in the CD supplied with the VM-3240VA. The setup wizard screen is displayed.

**Step 2.** Select "Repair VM3000 Setting Software," and click the Finish button to start updating the software.

**Step 3.** When the Installation Complete dialog is displayed, click the Close button to complete the update.



## 4. RUNNING THE VM-3000 SETTING SOFTWARE

To start the software, select "VM-3000 → Setting Software," or double-click the VM-3000 shortcut icon on the desktop.

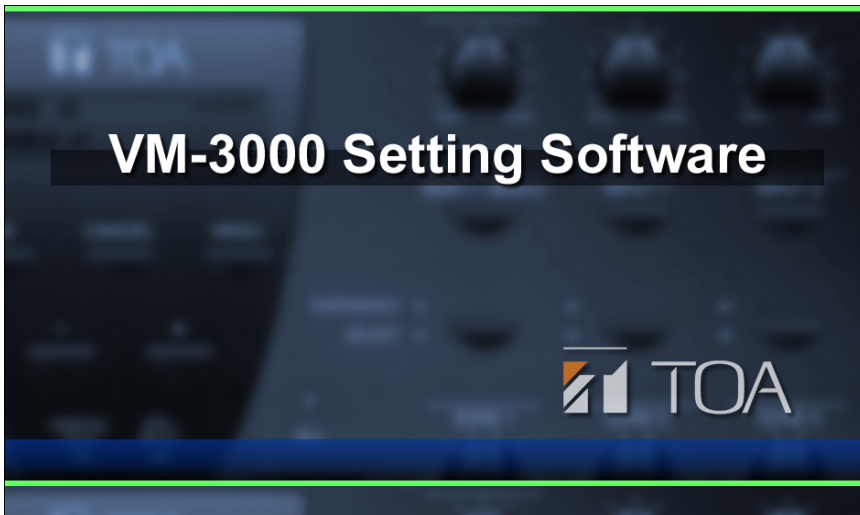
Start menu



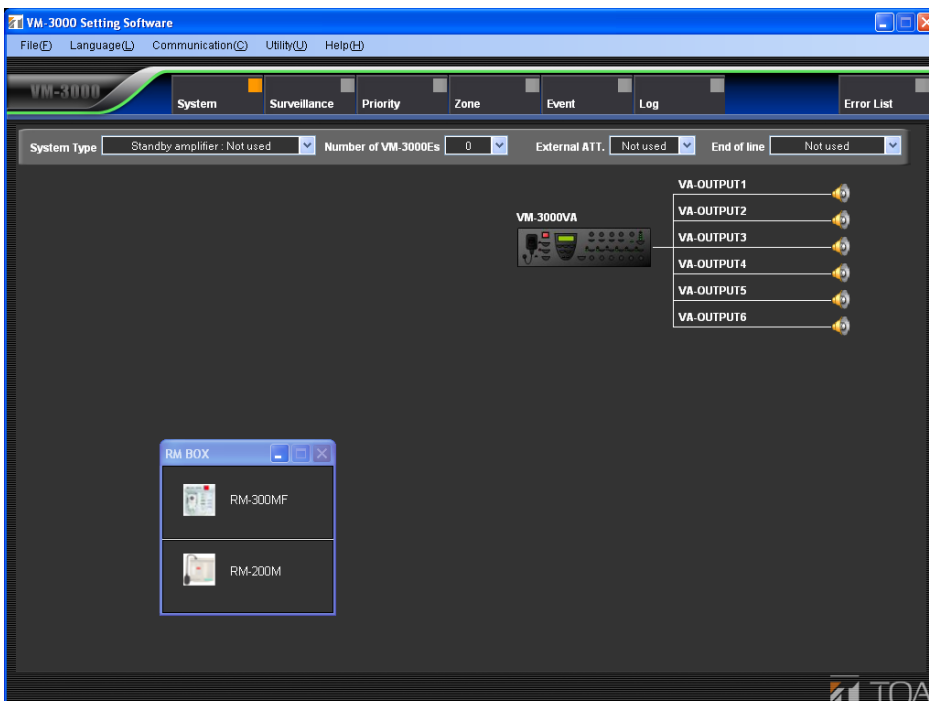
Shortcut icon on the desktop



Activating the software displays the following splash screen.



After activation is complete, the VM-3000 Setting Software initial screen is displayed.



## 5. SETTING ITEMS

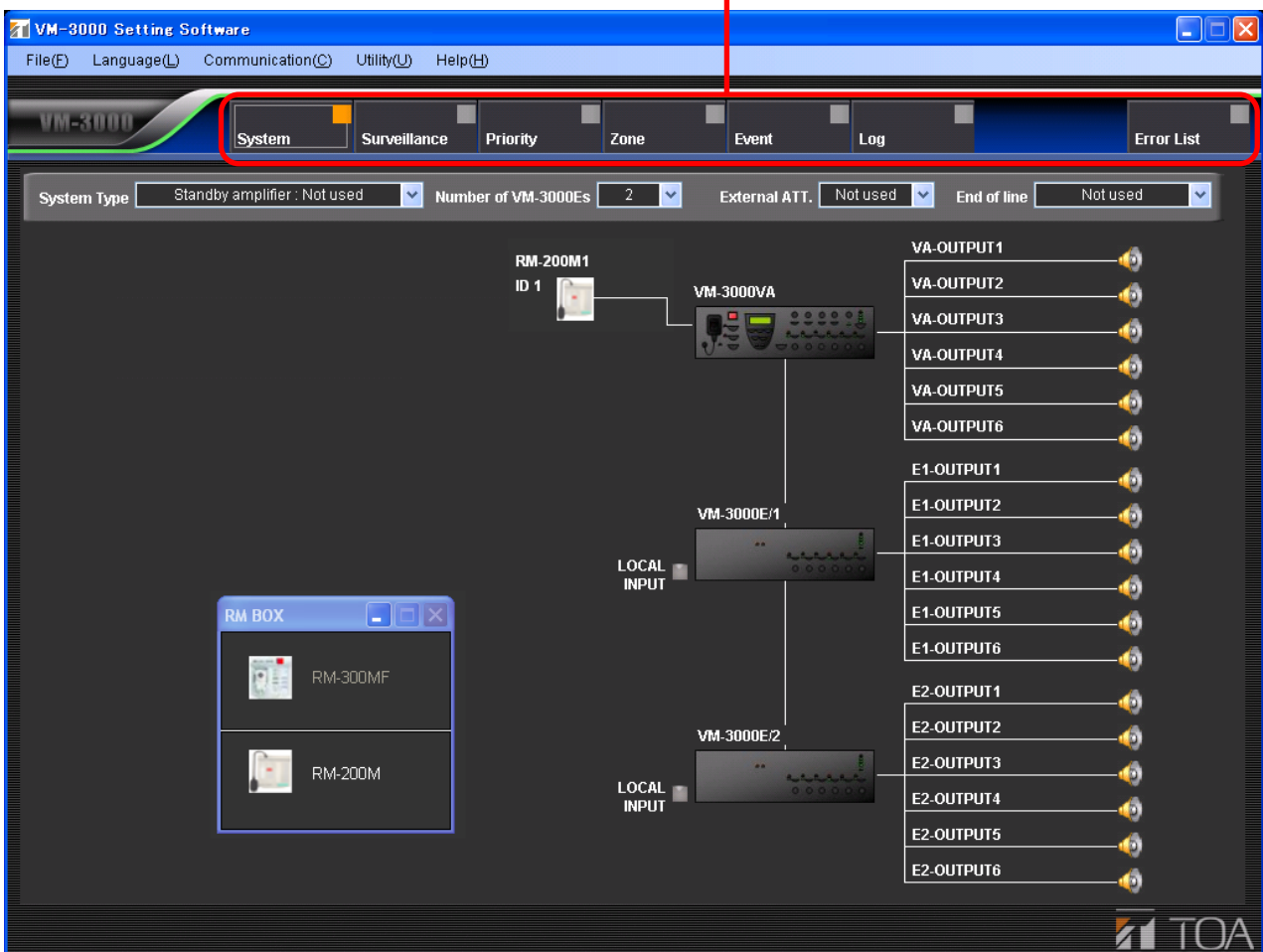
Menu items are displayed at the top of the setting screen.

These menu items include those from "System" to "Event." Settings are conducted in order from left to right. The other two menu items, "Log" and "Error List," are respectively for checking event histories and checking for irregularities in the settings data. Clicking on any of these menu items calls up the relevant setting screen.

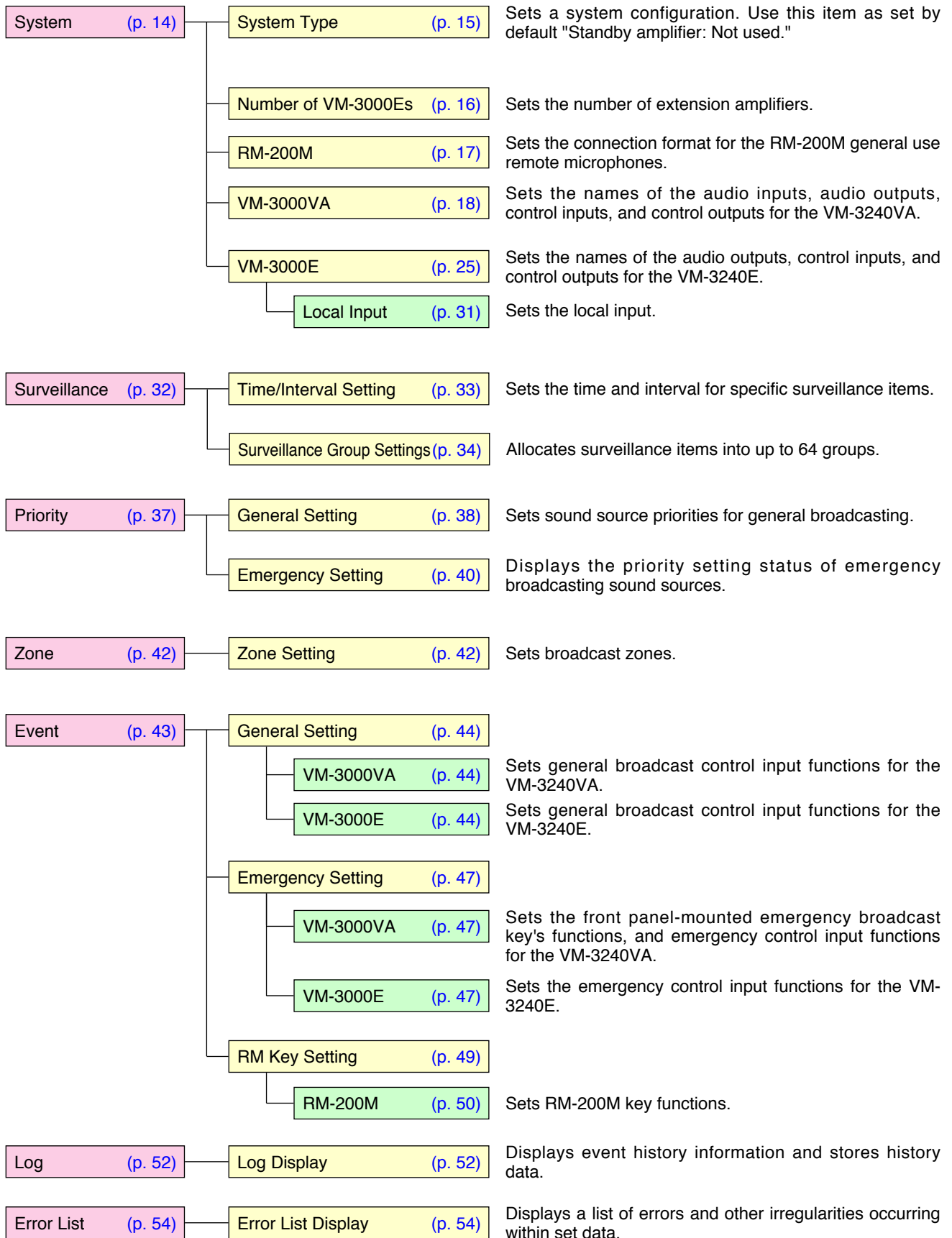
### Note

In the following setting screen illustrations and instructions, the VM-3240VA is referred to as "VM-3000VA", and the VM-3240E as "VM-3000E."

Menu Items



## 5.1. Menu Structure



### Important

Setting items other than the above are not certified to UL2572 and CAN/ULC-S576 for Mass Notification System.

## 5.2. Menu Bar Items & Explanations

For details on operations conducted by selecting the following menu items from the menu bar, see ["Menu Item Operations from the Menu Bar"](#) on page 55.

### File (F)

- New (N): Creates a new data file to be used by the VM-3000 setting software.
- Open (O): Reads an existing data file to be used by the VM-3000 setting software.
- Save (S): Saves the information currently being edited by the VM-3000 setting software and overwrites an existing data.
- Save As (A): Saves the information currently being edited by the VM-3000 setting software under a new file name.

### Data Output (P)

- Print Setting Data (P): Prints setting data.
- CSV Output (C): Exports setting data as a CSV file.
- RM Label (L): Creates and prints labels used to identify the keys on remote microphone (RM-200M).
- Exit (X): Quits the VM-3000 setting software.

### Language (L)

- Select (S): Selects the display language used by the VM-3000 setting software.

### Communication (C)

- Setting Data: VA->PC (D): Allows PC-set data stored in the VM-3240VA to be read back into a PC.
- Setting Data: PC->VA(U): Allows data set on a PC to be written from the PC into the VM-3240VA.
- Network Setting(N): Conducts communication settings needed to achieve communication between the VM-3000 setting software and the VM-3240VA.

### Utility (U)

- EV (E): Allows EV message sound source files used by the VM-3240VA to be written into the VM-3240VA from a PC or read from the VM-3240VA to a PC.

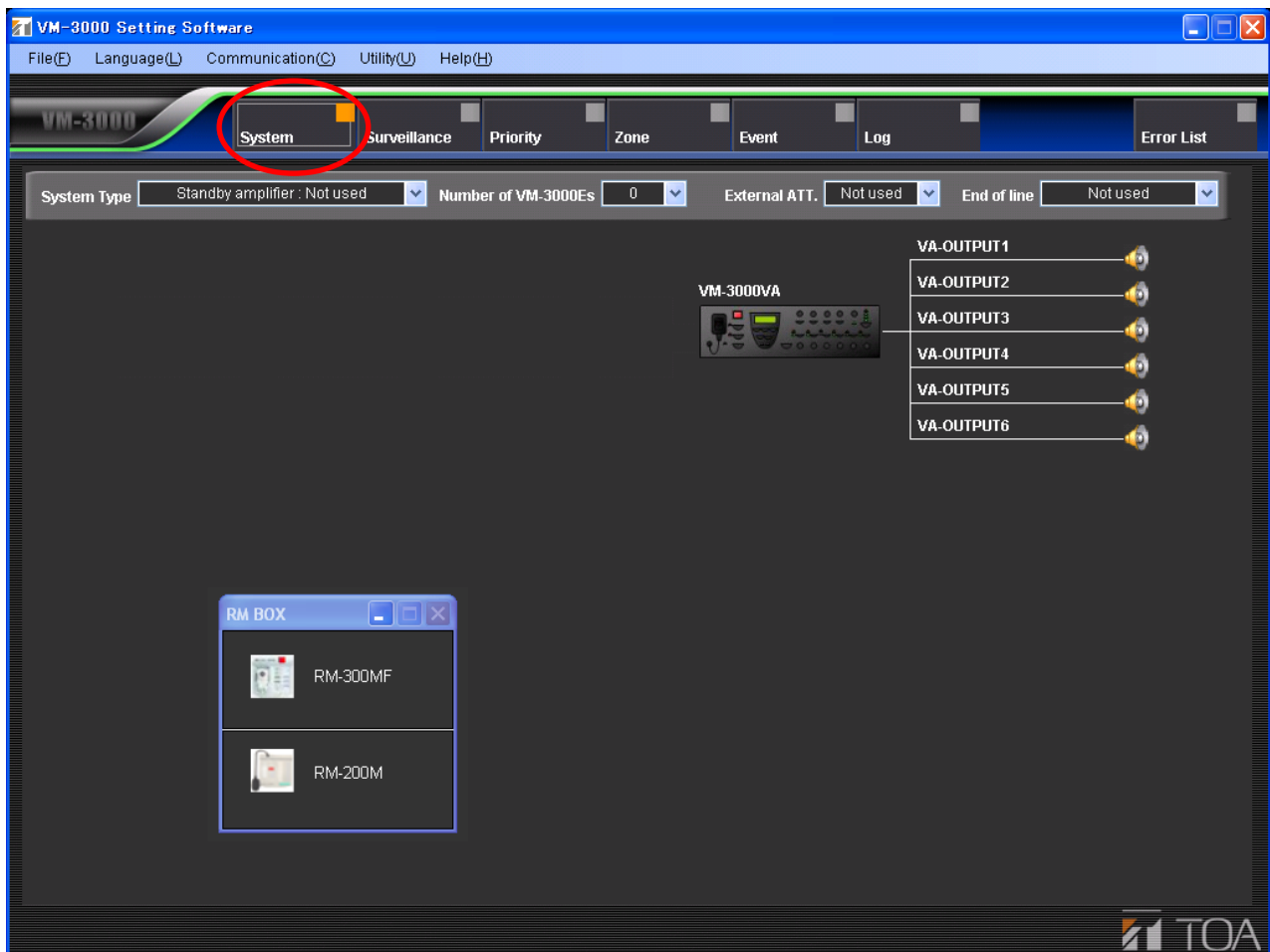
### Help (H)

- Version (A): Displays the version information for the VM-3000 setting software.

## 6. SYSTEM SETTINGS

Set the system configuration and inputs and outputs for each device.

Click the Menu item "System" button to display the system setting screen.



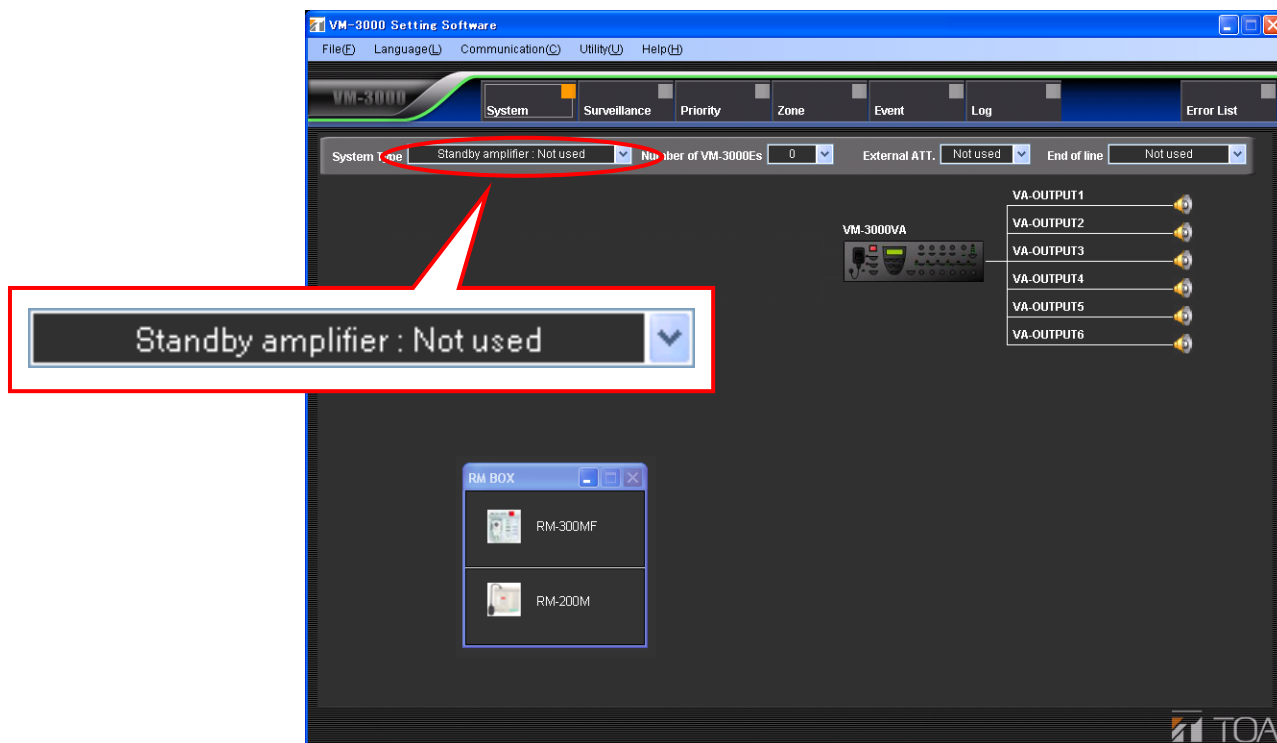
## 6.1. System Type Settings

Select the type of VM-3000 system.

Available Settings	Standby amplifier: Not used (default), Standby amplifier: Used, BGM/PAGING System
--------------------	---

Setting this to "Standby amplifier: Not used" sets the configuration to a system that does not use a standby amplifier.

Setting this to "Standby amplifier: used" and "BGM/PAGING System" is not certified to UL2572 and CAN/ULC-S576 for Mass Notification system.

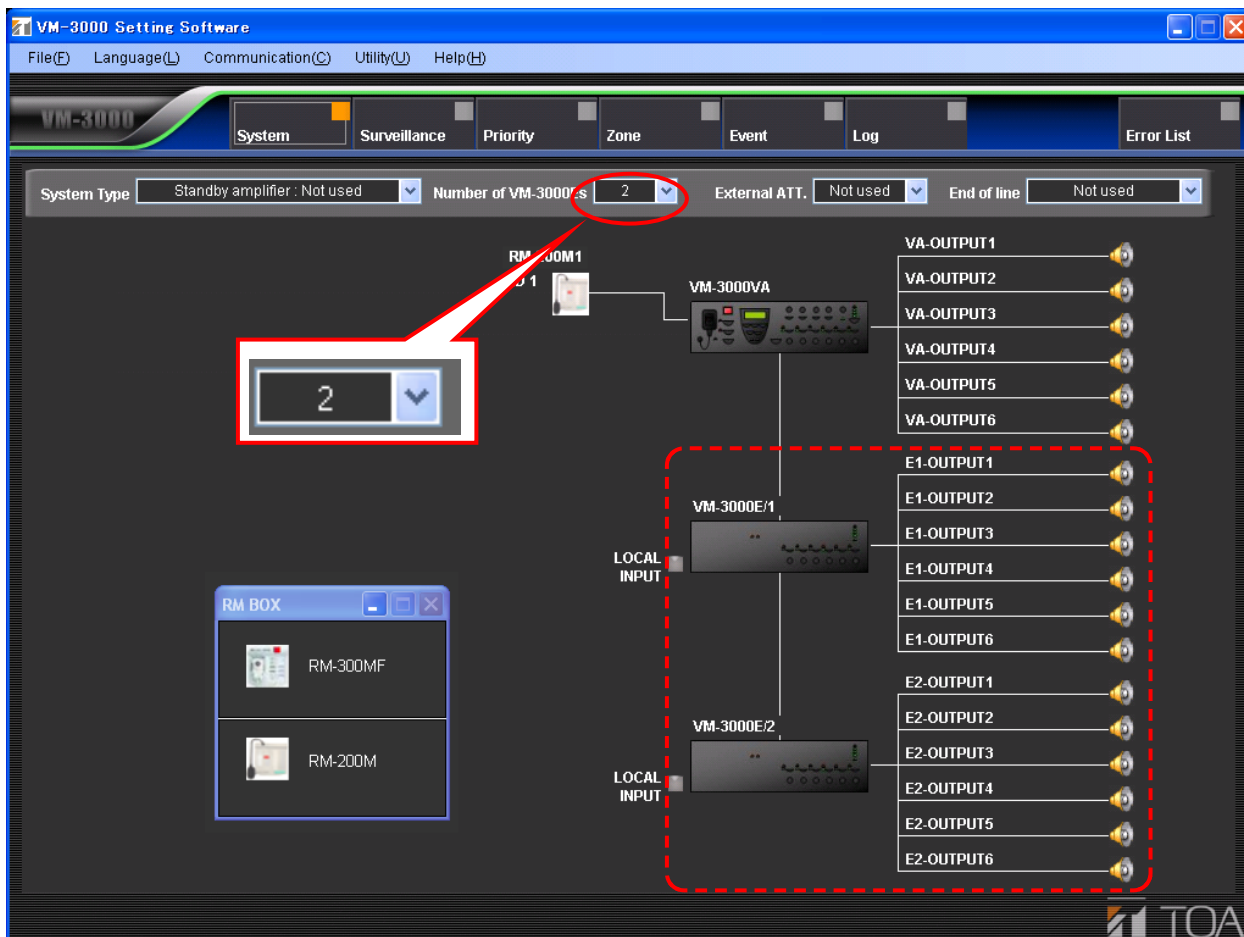


## 6.2. Setting the Number of VM-3000Es

Set the number of VM-3000Es being used.

Available Settings	0 to 9 (default: 0)
--------------------	---------------------

Selecting a number causes the VM-3000E icon to be displayed.



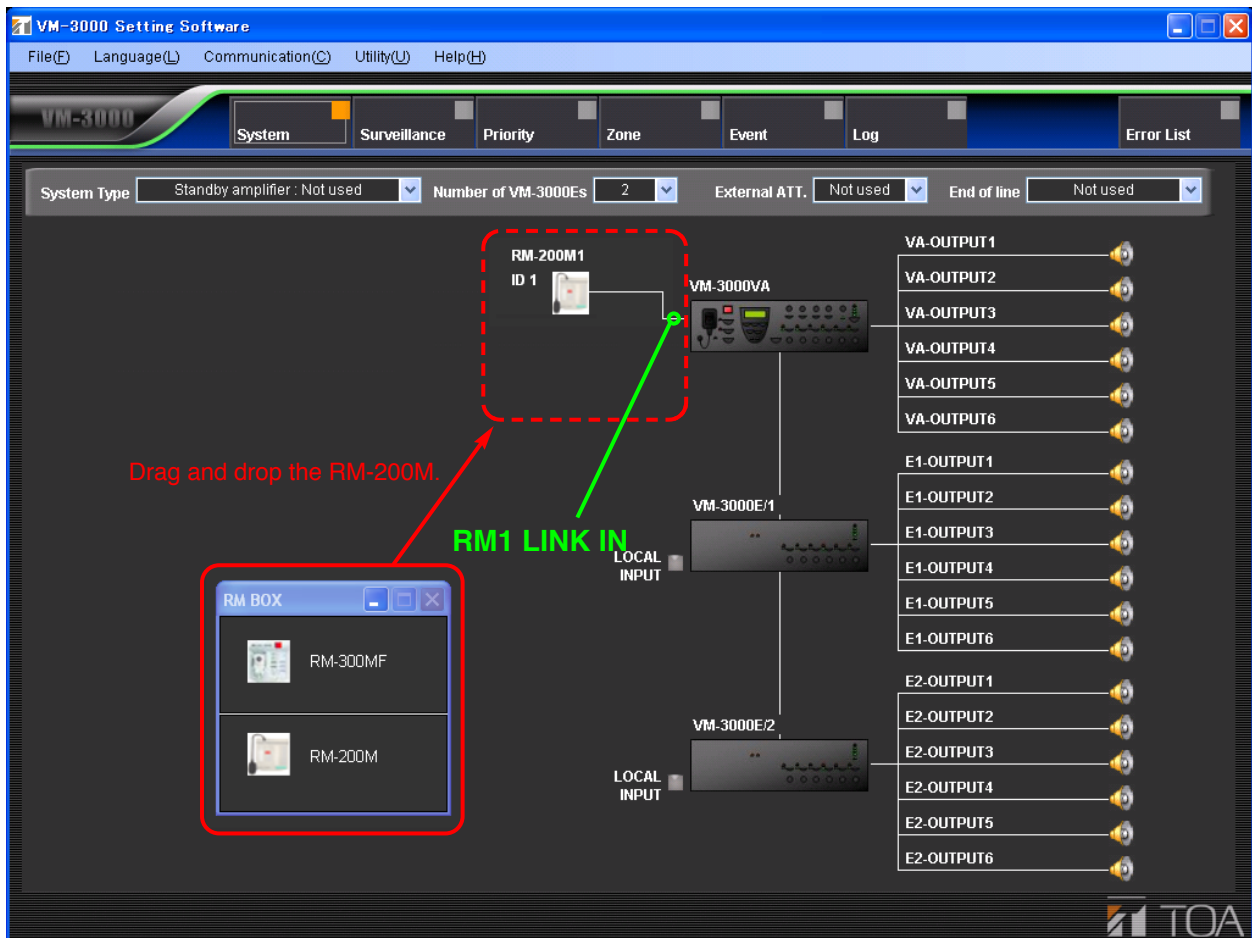


### 6.3. Settings for RM-200M Remote Microphone

Set the RM-200M Remote Microphone to use.

Select the RM-200M from the "RM BOX" window on the system setting screen, then drag and drop it around the VM-3000VA icon.

**Note:** Do not select the RM-300MF because it is not certified to UL2572 and CAN/ULC-S576 for Mass Notification System.



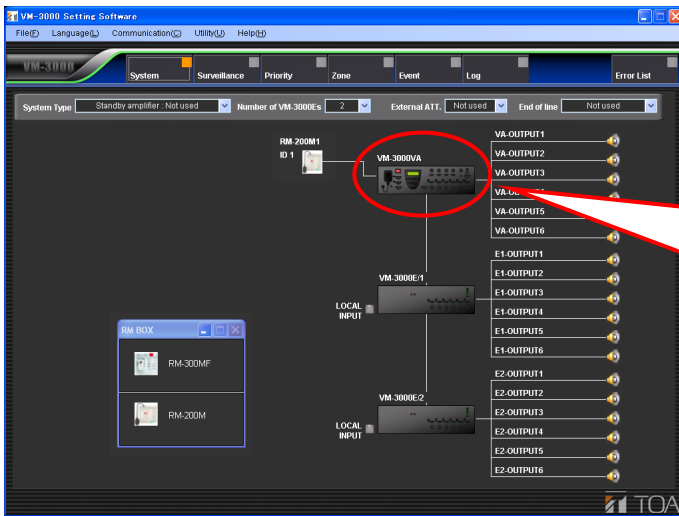
Clicking the set remote microphone icon transfers the display to the [RM Key Setting screen \(page 49\)](#) in [Event Settings](#), allowing the functions of the remote microphone keys to be set.

To delete a set remote microphone icon, position the pointer on it and right click to access the "Delete" option.

## 6.4. VM-3000VA Settings

Set the audio inputs and outputs, as well as control inputs and outputs, for the VM-3000VA.

Clicking the VM-3000VA icon on the System Setting screen switches the display to the VM-3000VA setting screen.

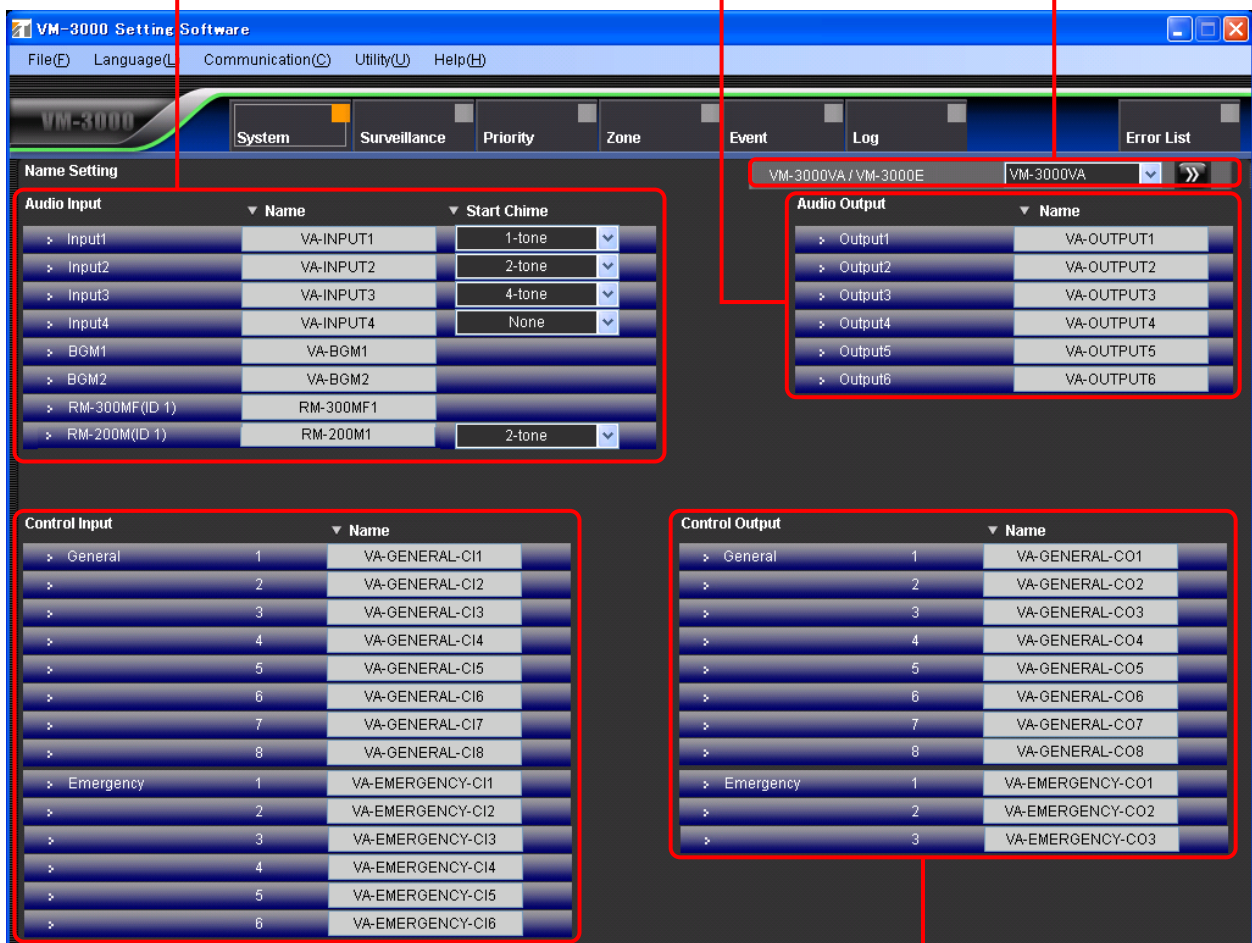


"VM-3000VA Setting Screen"

Audio input setting (p. 19)

Changeover to the VM-3000VA/VM-3000E setting screen (p. 23)

Audio output setting (p. 20)

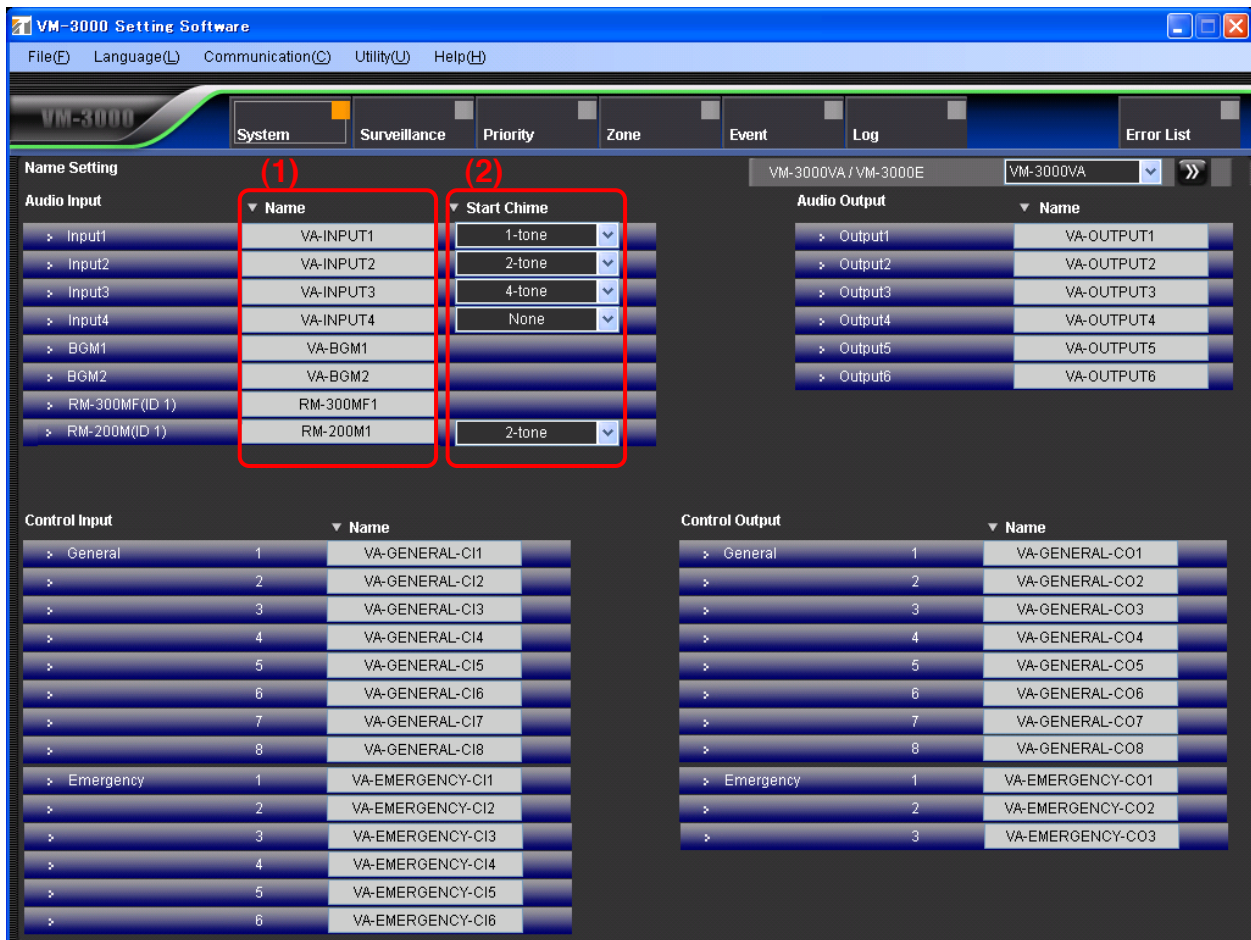


Control input setting (p. 21)

Control output setting (p. 22)

## 6.4.1. Audio input settings

Set the audio inputs for the VM-3000VA.



### (1) Name

Sets each audio input name.

Available Settings	Up to 16 alphanumeric characters (default names are VA-INPUT*, VA-BGM*, RM-300MF*, and RM-200M*, in which "*" is a number).
--------------------	---

**Note:** RM-300MF can not be used.

### (2) Start Chime

Selects the chime sound used at the beginning of audio input broadcasting.

Available Settings	None (default), 1-tone, 2-tone, 4-tone, Gong
--------------------	--

## 6.4.2. Audio output settings

Set the audio outputs for the VM-3000VA.



### (1) Name

Sets each audio output name.

Available Settings	Up to 16 alphanumeric characters (default name is VA-OUTPUT*, in which "*" is the terminal number).
--------------------	---

### 6.4.3. Control input settings

Set the control inputs for the VM-3000VA.



#### (1) Name

Sets the names for general control inputs.

Available Settings	Up to 16 alphanumeric characters (default names are VA-GENERAL-CI* and VA-EMERGENCY-CI*, in which "*" is the terminal number).
--------------------	--



## 6.4.4. Control output settings

Set the control outputs for the VM-3000VA.



### Note

Only " Emergency " control outputs may be used. (Never use " General " control outputs.)

### (1) Name

Sets the names for emergency control outputs.

#### Available Settings

Up to 16 alphanumeric characters (default names are VA-GENERAL-CO\* and VA-EMERGENCY-CO\*, in which "\*" is the terminal number).

### 6.4.5. VM-3000VA/VM-3000E setting screen changeover

Click the box or double-arrow button to select the VM-3000VA or VM-3000E to be set. This will cause the display to change to the setting screen for the selected model.

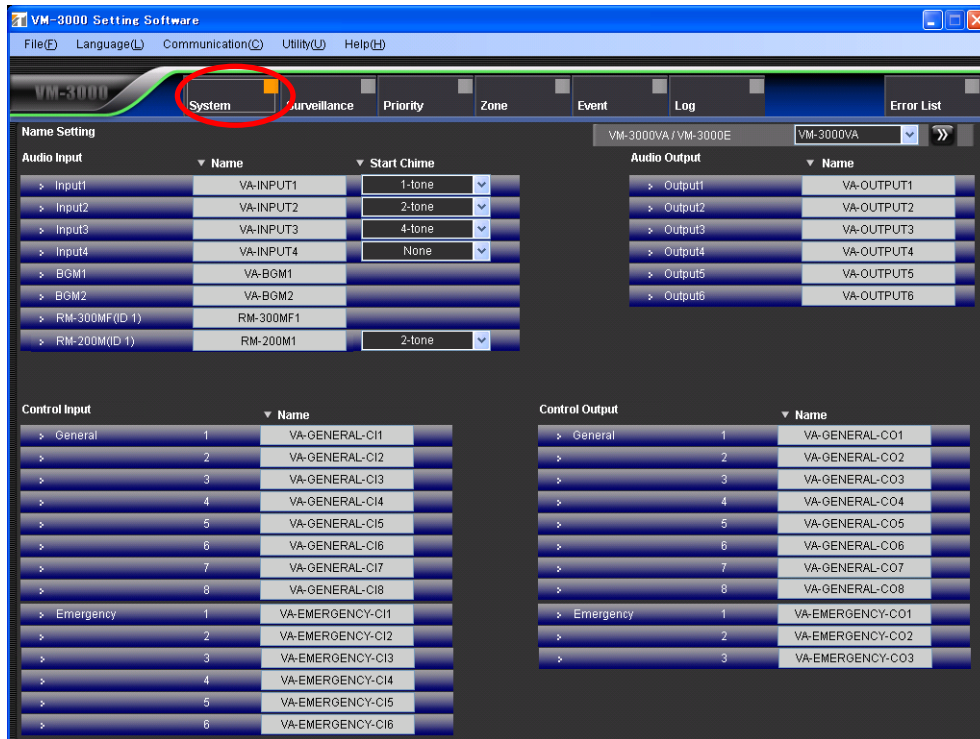
See [page 25](#) for VM-3000E settings.



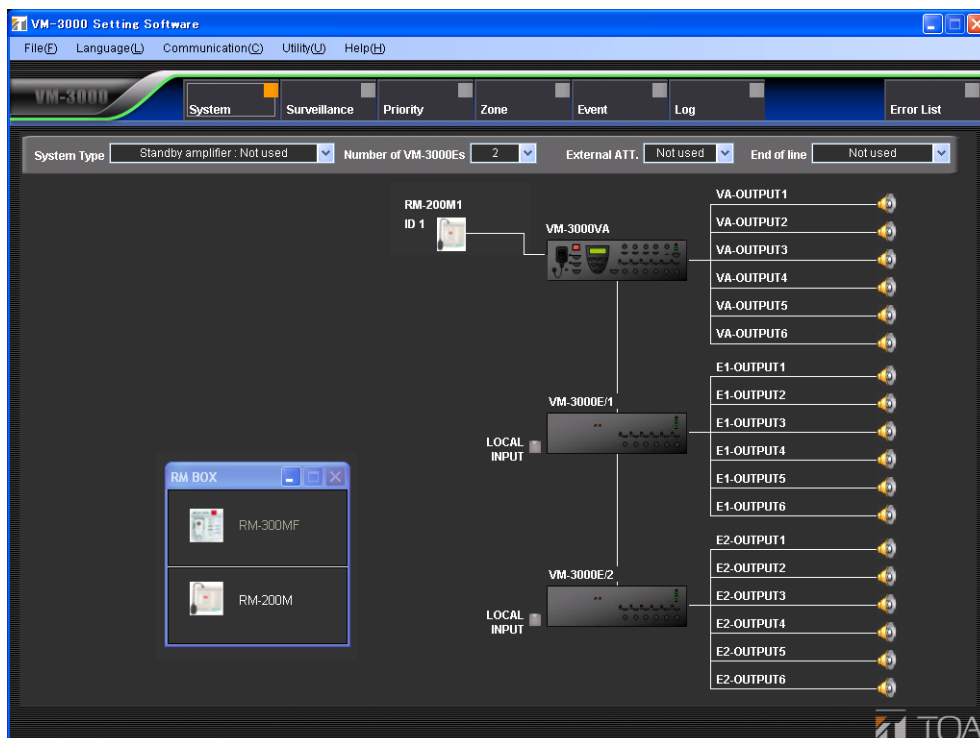
### 6.4.6. Returning to the system setting screen from the VM-3000VA setting screen

To return to the system setting screen from the VM-3000VA setting screen, click the "System" button in the menu bar.

"VM-3000VA setting screen"



"System setting screen"

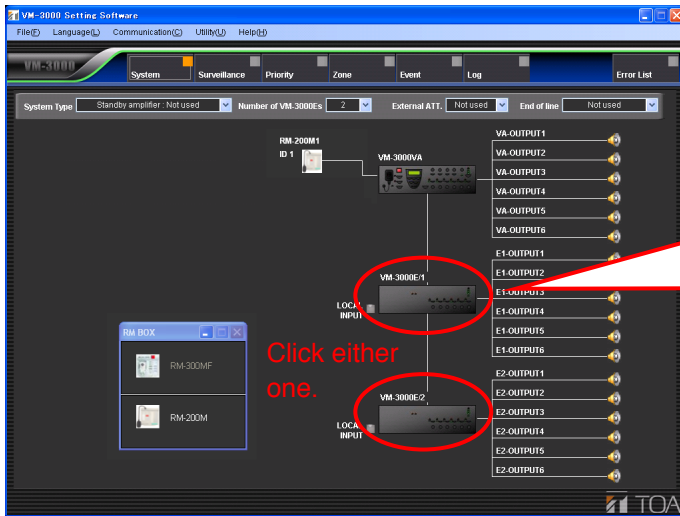




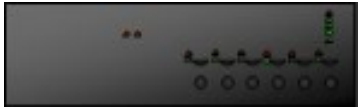
## 6.5. VM-3000E Settings

Set the audio outputs, as well as control inputs and outputs, for the VM-3000E.

Clicking the VM-3000E/# (in which "#" is an ordinal number) icon on the system setting screen changes the display to the VM-3000E setting screen.



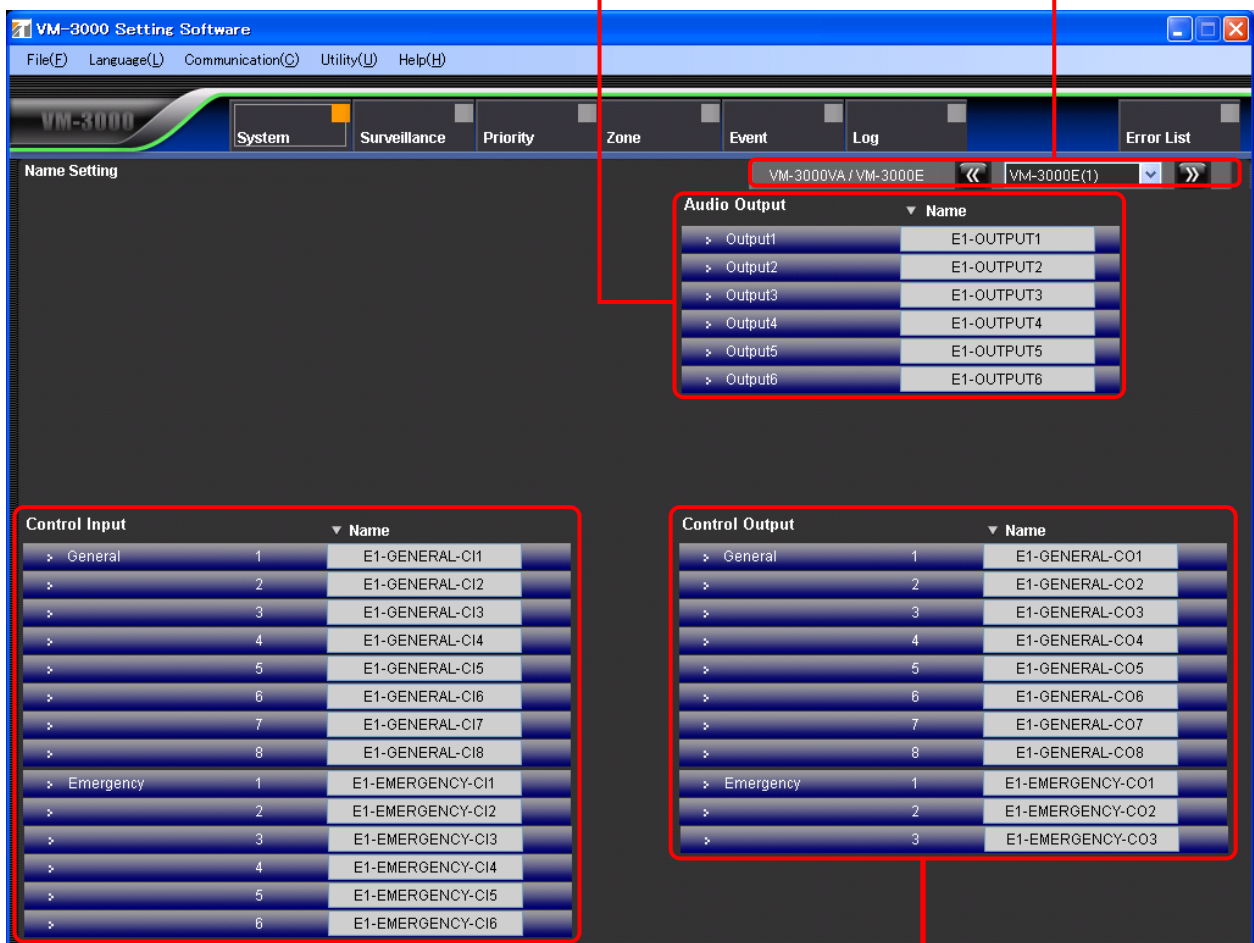
VM-3000E



Click the icon of the VM-3000E to be set.

"VM-3000E Setting Screen"

Changeover to the VM-3000VA/VM-3000E setting screen (p. 29)  
Audio output setting (p. 26)



Control input setting (p. 27)

Control output setting (p. 28)

## 6.5.1. Audio output setting

Set the audio outputs for the VM-3000E.



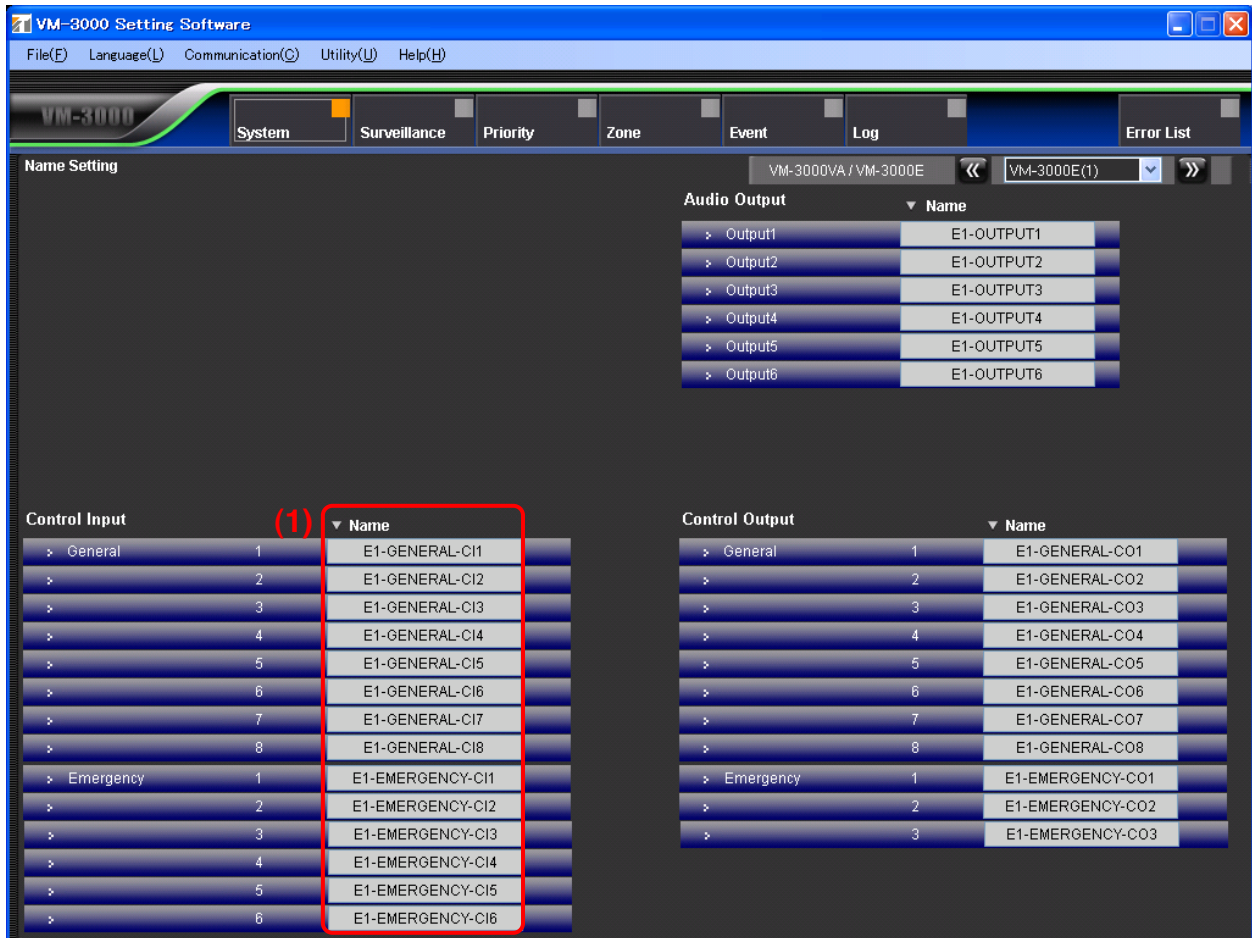
### (1) Name

Sets each audio output name.

Available Settings	Up to 16 alphanumeric characters (default names is E#OUTPUT*, in which "#" is an ordinal number and "*" is the terminal number).
--------------------	--

## 6.5.2. Control input settings

Set the control inputs for the VM-3000E.



### (1) Name

Sets the names for general control inputs.

Available Settings	Up to 16 alphanumeric characters (default names are E#-GENERAL-CI* and E#-EMERGENCY-CI*, in which "#" is an ordinal number and "*" is the terminal number).
--------------------	---

### 6.5.3. Control output settings

Set the control outputs for the VM-3000E.



#### Note

Only "Emergency" control outputs may be used. (Never use " General " control outputs.)

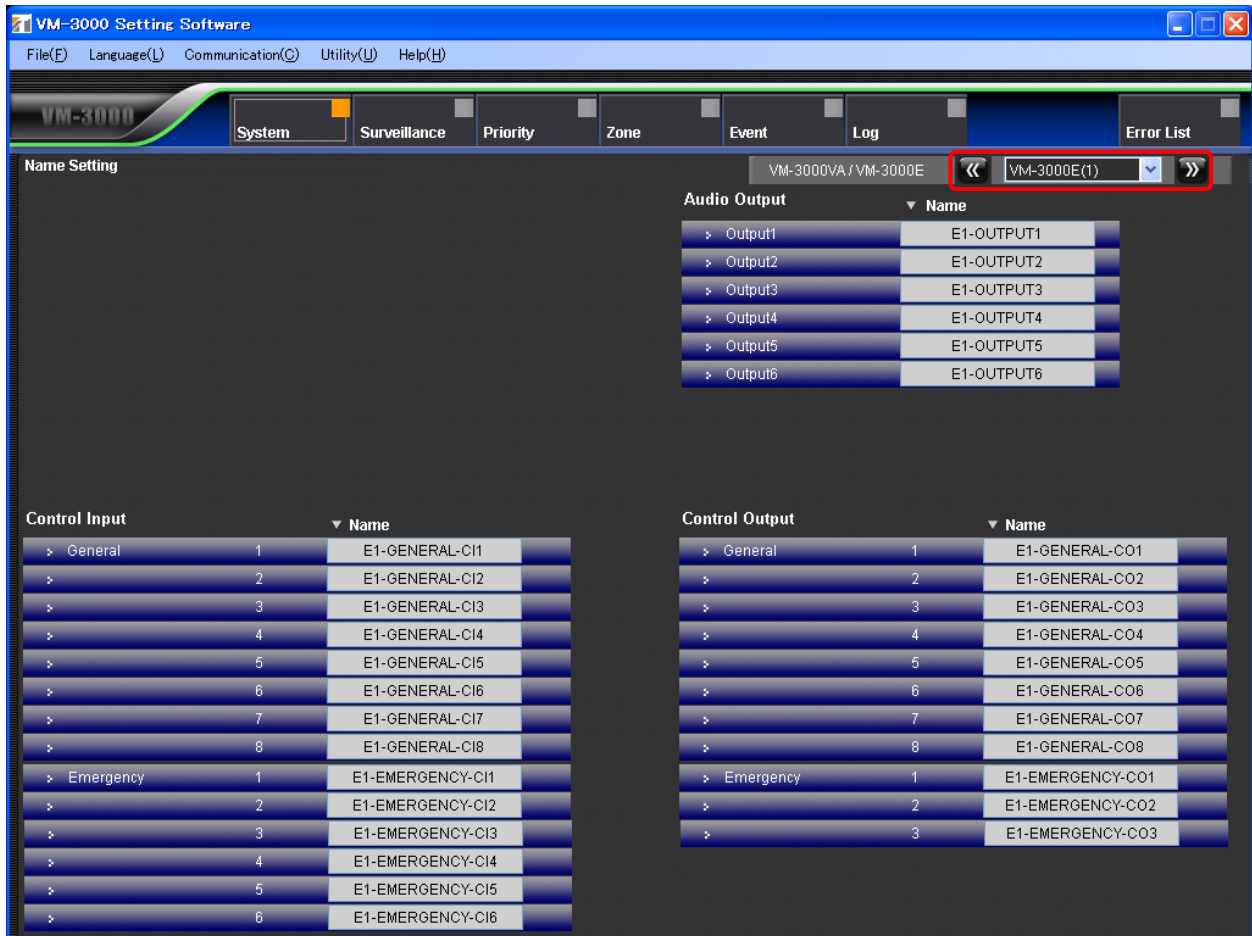
#### (1) Name

Sets the names for status outputs.

Available Settings	Up to 16 alphanumeric characters (default names are E#-GENERAL-CO* and E#-EMERGENCY-CO*, in which "#" is an ordinal number and "*" is the terminal number).
--------------------	---

### 6.5.4. VM-3000VA/VM-3000E setting screen changeover

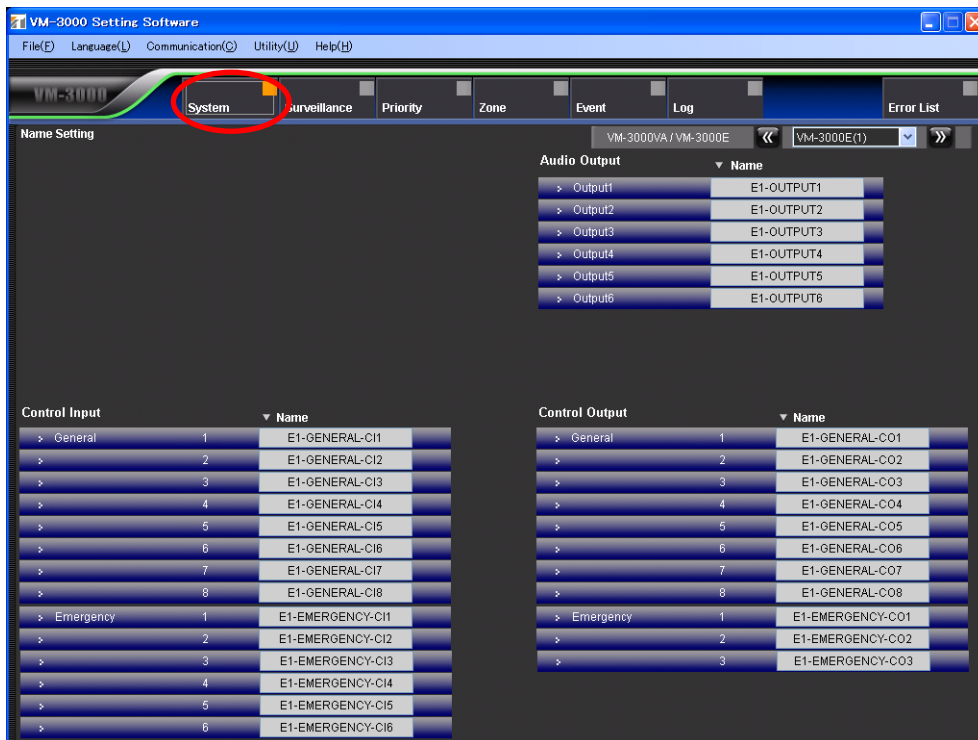
Click the box or double-arrow button to select the VM-3000VA or VM-3000E to be set.  
This will cause the display to change to the setting screen for the selected model.  
See [page 18](#) for VM-3000VA settings.



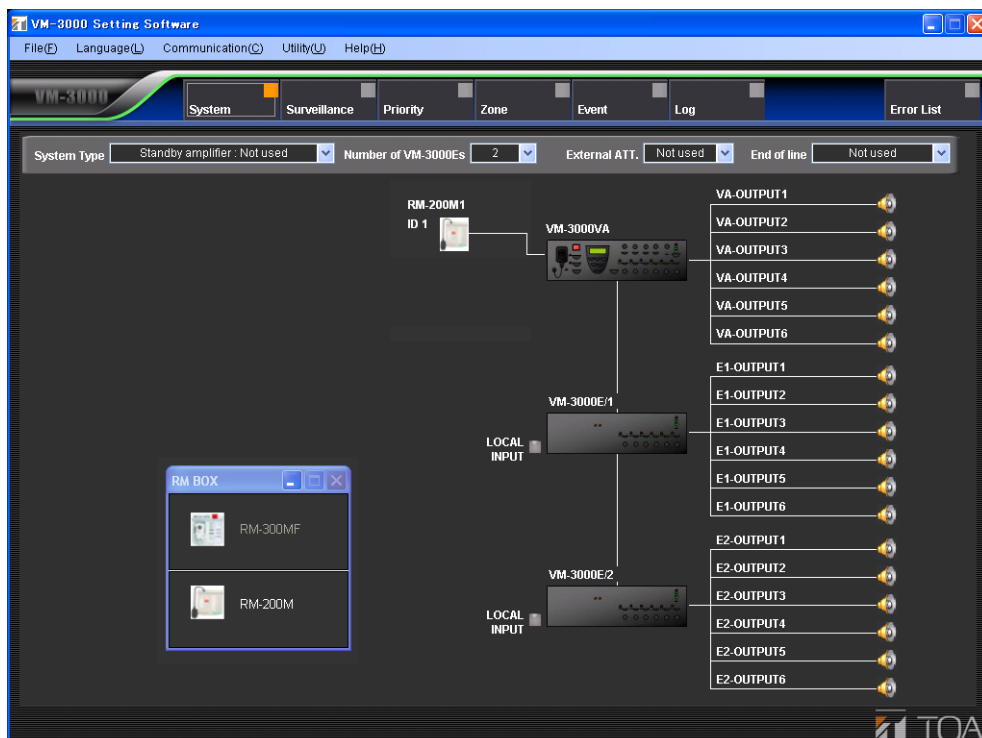
### 6.5.5. Returning to the system setting screen from the VM-3000E setting screen

To return to the original system setting screen from the VM-3000E setting screen, click the "System" button in the menu bar.

"VM-3000E setting screen"



"System setting screen"





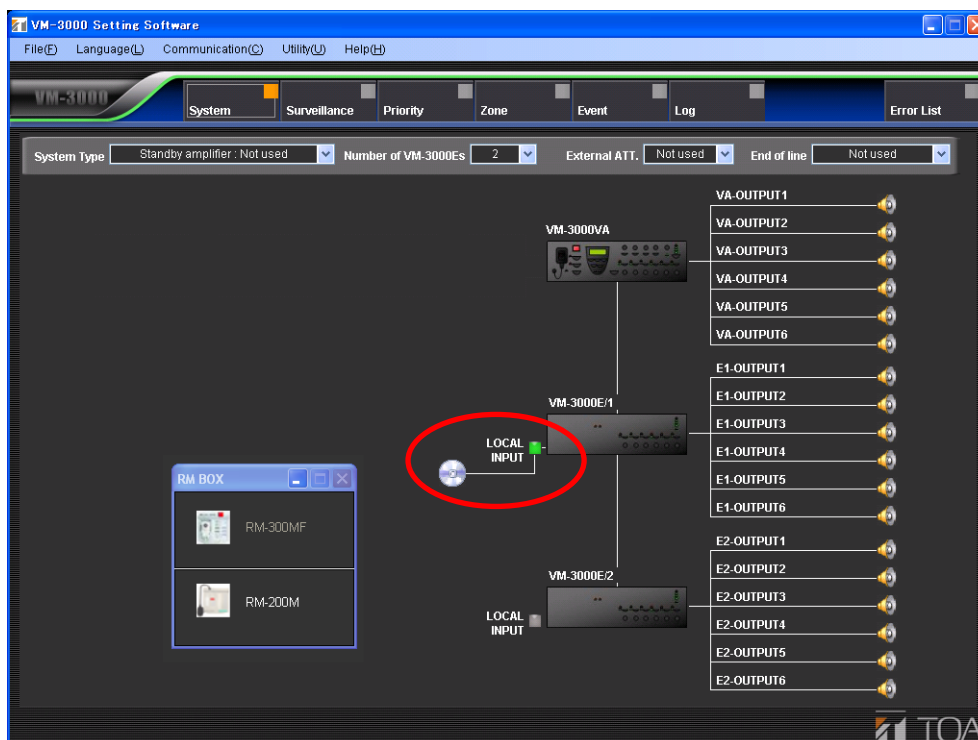
## 6.6. Local Input Setting

This setting allows the VM-3000E to make local broadcasts using the local input only within the system that the VM-3000E covers.

Click the VM-3000E's Local Input button on the System Setting screen to activate the local input.

The priority level for the local input source can be set in relation to the input sources of the VM-3000VA. (For priority setting, refer to p. 37.)

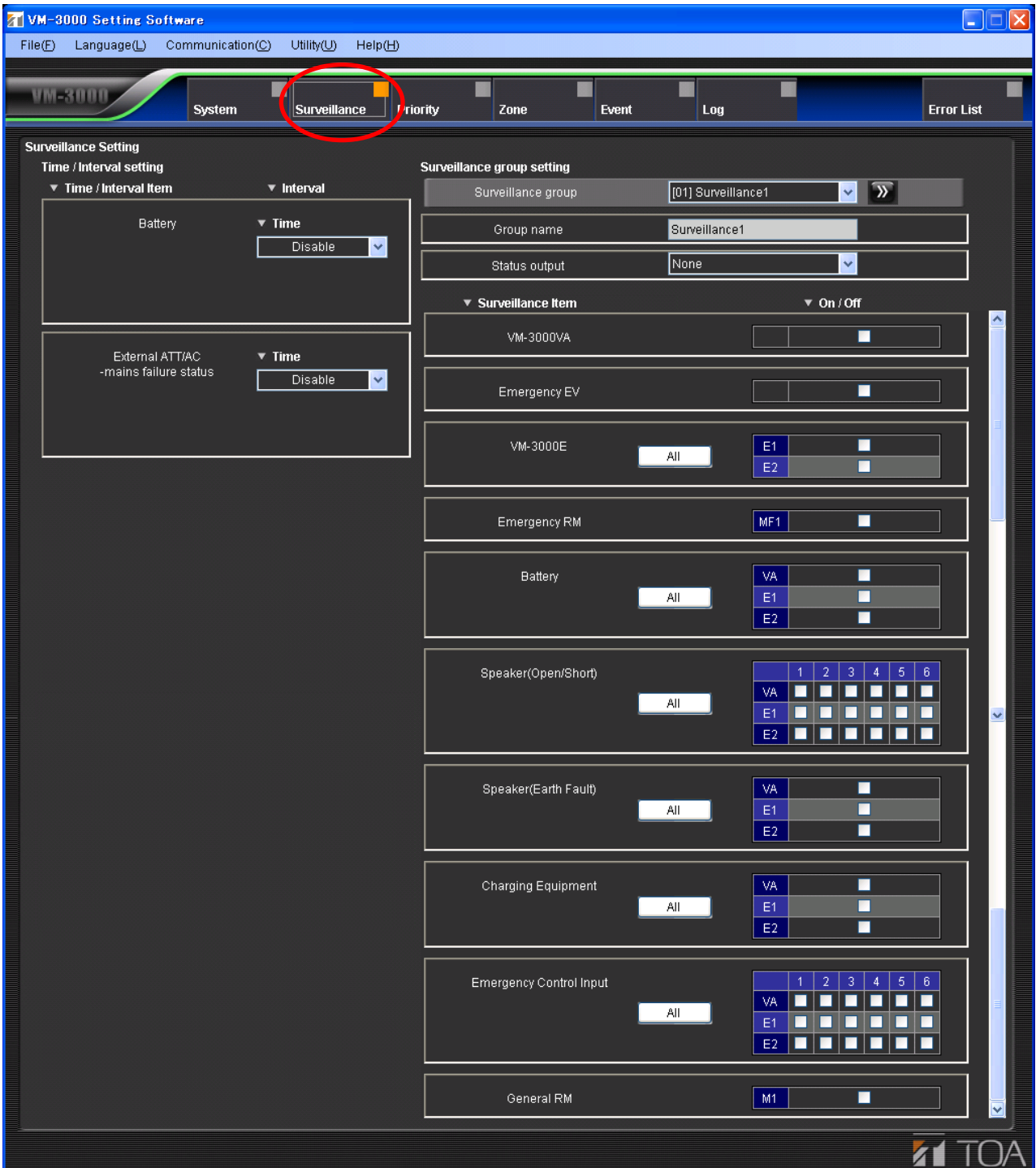
The broadcast output channel through the local input is automatically assigned to each corresponding general control input of VM-3000E. (Refer to p. 46.)



# 7. SURVEILLANCE SETTINGS

Set individual failure detection items.

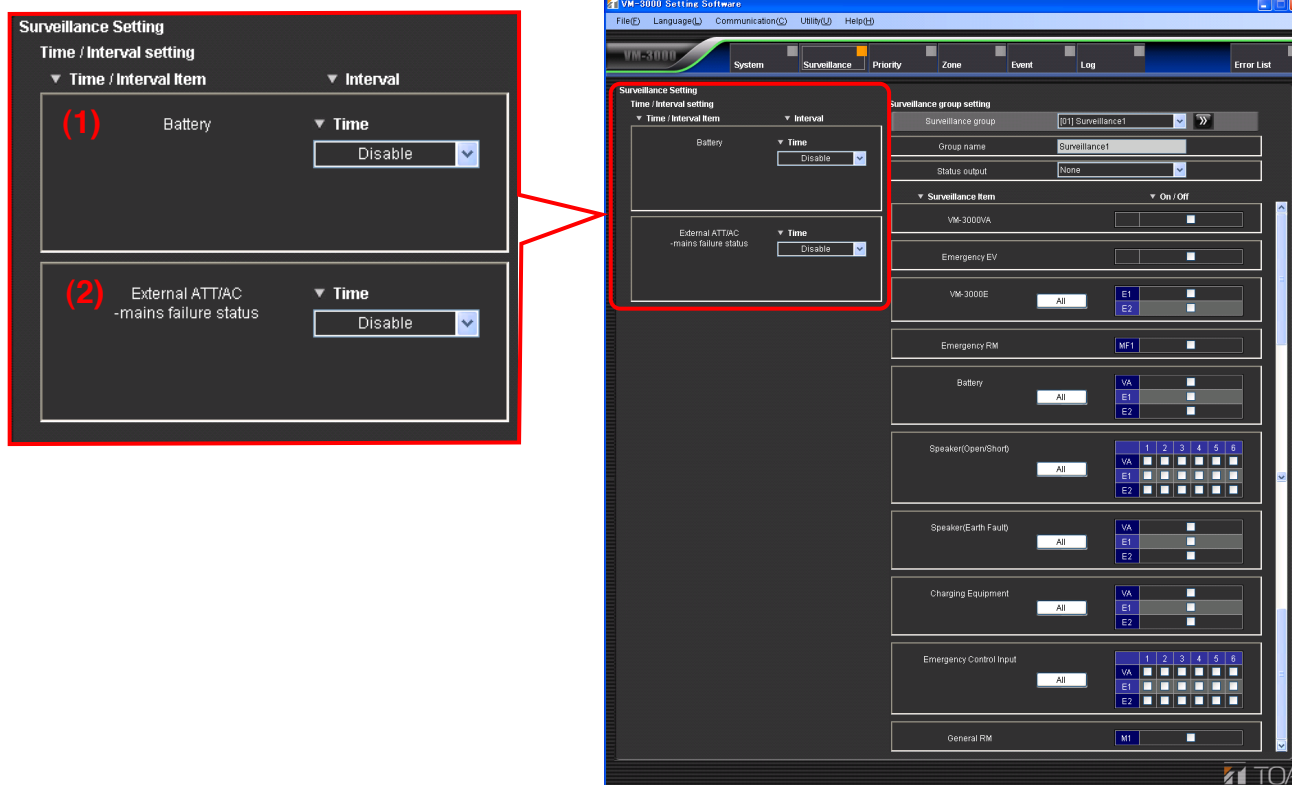
Click the Menu item "Surveillance" button to display the surveillance setting screen.





## 7.1. Time/Interval Setting

Set the start time and interval for battery check, external attenuator-connected speaker line check, and system surveillance at power failure.



### (1) Battery (Must be set to disable according to UL2572 and CAN/ULC-S576.)

Sets the start time and interval to check the conditions of the batteries selected in the Battery item of the Surveillance Group Settings (see p. 34).

- Time

Available Settings	Disable (default), 00:00 to 23:00 (in 1-hour steps)
--------------------	---

- Interval (displayed when "Time" item is not set to "Disable.")

Available Settings	4h (default), 24h
--------------------	-------------------

### (2) External ATT/AC-main failure status (Must be set to "Time: 00:00, Interval: 100 sec" according to UL2572 and CAN/ULC-S576.)

Sets the start time and interval to check the conditions of the external attenuator-connected speaker lines selected in the Speaker (Open/Short) item of the Surveillance Group Settings (see p. 34).

The Time/Interval set herein also allows all the surveillance items selected in the Surveillance Group Settings to be performed in case of power failure.

- Time

Available Settings	Disable (default), 00:00 to 23:00 (in 1-hour steps)
--------------------	---

- Interval (displayed when "Time" item is not set to "Disable.")

Available Settings	100 sec (default), 4h, 24h
--------------------	----------------------------

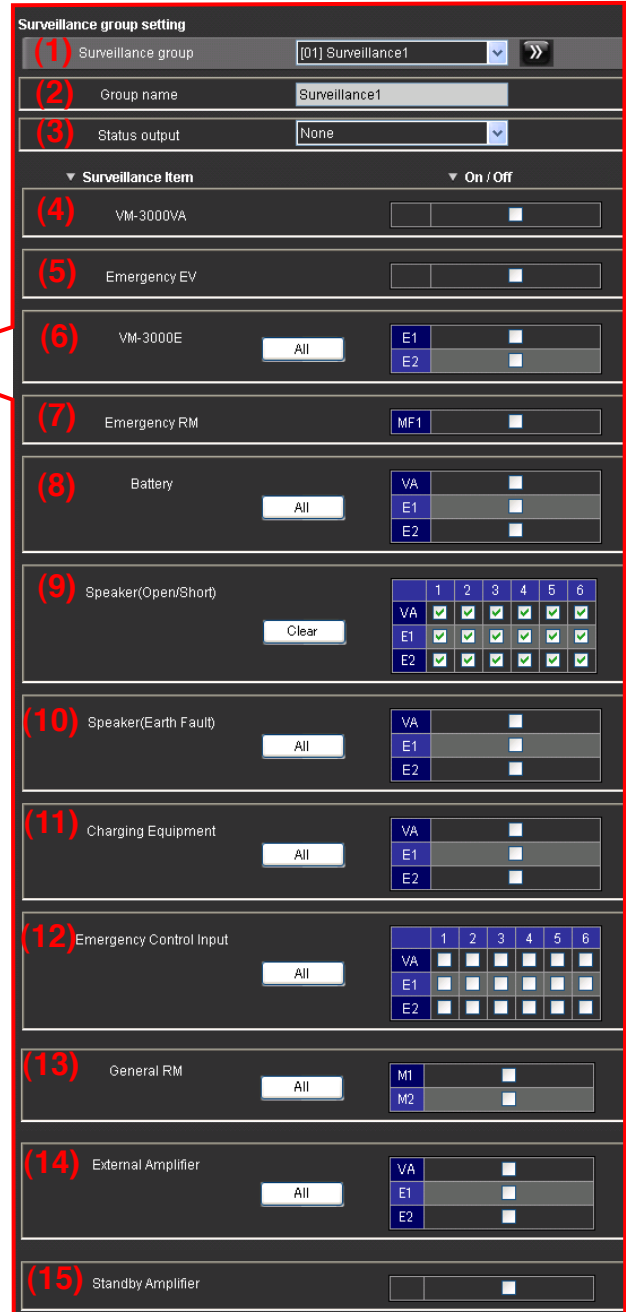
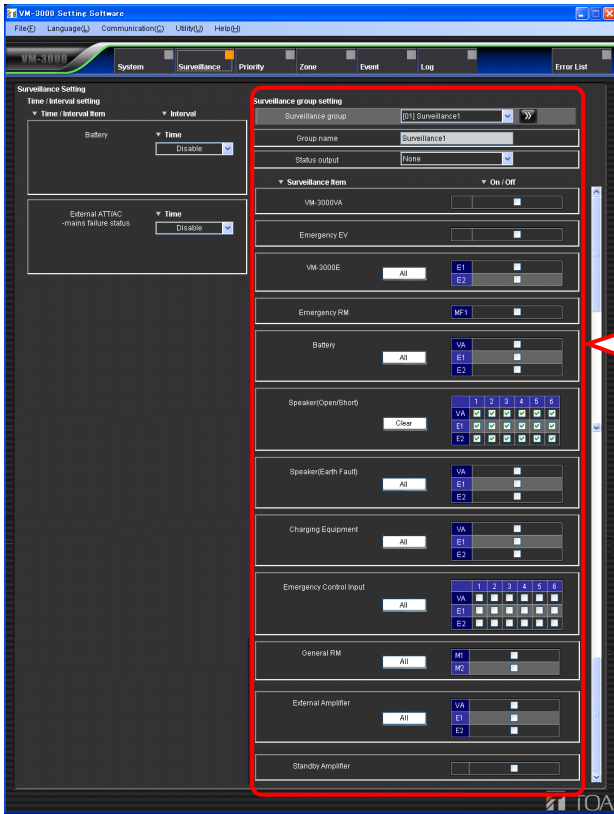
#### Note

Since broadcast sound volume increases because attenuators are bypassed when the speaker line surveillance is performed during broadcasts, it is recommended that the time and intervals be set for the time zone in which no broadcast is scheduled.

## 7.2. Surveillance Group Settings

Individual surveillance items can be registered into up to 64 groups.

If a failure is detected on any item in a group, this can be notified by the indicator on the remote microphone. One failure status control output equipped with the VM-3000VA or VM-3000E can be set for each surveillance group.



**(1) Surveillance group**

Select the surveillance group to be set.

Available Settings	[01] Surveillance 1 - [64] Surveillance 64
--------------------	--

**(2) Group name**

Sets the names for surveillance groups.

Available Settings	Up to 16 alphanumeric characters (default names are Surveillance*, in which "*" is the group number.)
--------------------	---

**(3) Status output**

Sets the failure status output of the VM-3000VA or VM-3000E.

The setting is made by designating the unit as only one failure status output is provided with each unit.

Available Settings	NONE (default), All, VM-3000VA, VM-3000E*, in which "*" is the unit number.
--------------------	---

Set to ON or OFF for each function in the following items (4) through (15).

Checking a box turns the function on. (All are off by default.)

Click the "All" button to turn on all failure detection functions corresponding to the displayed surveillance item.

Click the "Clear" button to turn them off.

**(4) VM-3000VA** (Must be set to on according to UL2572 and CAN/ULC-S576.)

Checks the VM-3000VA's power amplifier, emergency microphone, TALK key, and power supply voltage.

**(5) Emergency EV** (Must be set to on according to UL2572 and CAN/ULC-S576.)

Checks Alert and Evacuation message files.

**(6) VM-3000E** (Must be set to on according to UL2572 and CAN/ULC-S576.)

Checks the power amplifier for the relevant VM-3000E, communications functions between the VM-3000VA and VM-3000E, and the power supply voltage.

**(7) Emergency RM**

Not used.

**(8) Battery** (Must be set to disable according to UL2572 and CAN/ULC-S576.)

Checks the condition of the battery of the VX-2000DS connected to the relevant unit.

**Note**

To perform the battery surveillance, be sure also to set the start time and interval in the Battery item of the Time/Interval Setting (see p. 33).

**(9) Speaker (Open/Short)** (Must be set to on according to UL2572 and CAN/ULC-S576.)

Checks for open or shorted conditions in the speaker lines.

Surveillance is continuously performed.

**Note**

To perform the surveillance for external attenuator-connected speaker lines, be sure also to set the start time and interval in the External ATT/AC-mains failure status item of the Time/Interval Setting.

**(10) Speaker (Earth Fault)** (Must be set to on according to UL2572 and CAN/ULC-S576.)

Checks the earth fault of the speaker lines for the relevant unit.

**(11) Charging Equipment** (Must be set to on according to UL2572 and CAN/ULC-S576.)

Checks the condition of the recharging circuit of the VX-2000DS connected to the relevant unit.

**(12) Emergency Control Input** (Must be set to on according to UL2572 and CAN/ULC-S576.)

Checks for disconnection or short circuits in the emergency control input lines from external equipment connected to the relevant unit.

**(13) General RM**

Checks communications between the relevant RM-200M and VM-3000VA.

**(14) External Amplifier**

Not used.

**(15) Standby Amplifier**

Not used.

NOTICE TO USERS, INSTALLERS, AUTHORITIES HAVING JURISDICTION, AND OTHER INVOLVED PARTIES

This product incorporates field-programmable software. In order for the product to comply with the requirements in the Standard for Control and Communication Units for Mass Notification Systems, UL2572 and CAN/ULC-S576.), certain programming features or options must be limited to specific values or not used at all as indicated below.

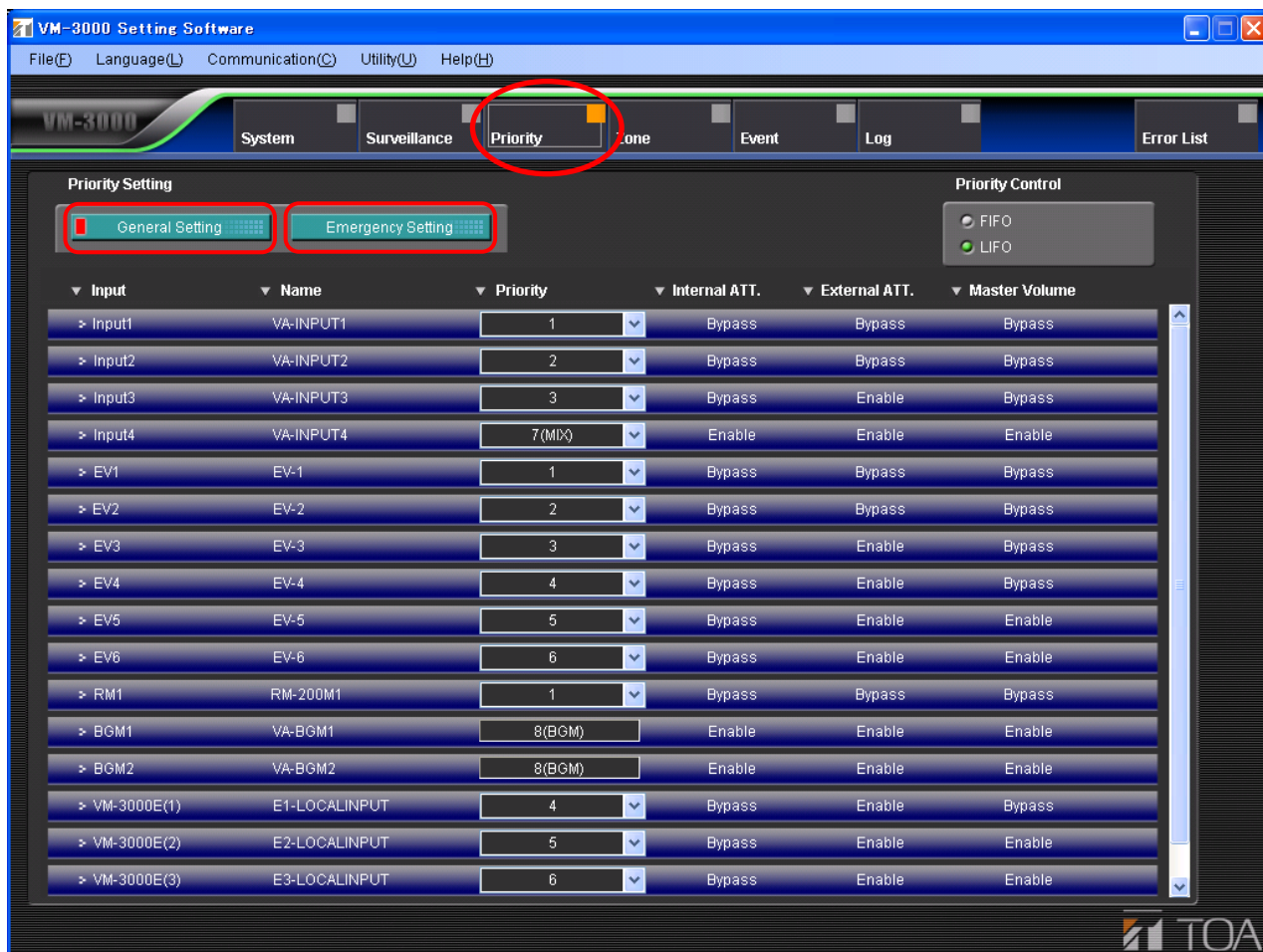
Program feature or option	Permitted in UL2572 and CAN/ULC-S576 (Y/N)	Possible settings	Settings permitted in UL2572 and CAN/ULC-S576
Time / Interval setting			
Battery Time	N	Disable / 00:00 - 23:00	Disabled
External ATT/AC Time-mains failure status	Y	Disable / 00:00 - 23:00	Time 00:00 Interval 100 sec
Surveillance group setting			
VM-300VA	Y	On / Off	On
Emergency EV	Y	On / Off	On
VM-3000E	Y	On / Off	On
Battery	Y	On / Off	On
Speaker (Open/Short)	Y	On / Off	On* <sup>1</sup>
Speaker (Earth Fault)	Y	On / Off	On
Charging Equipment	Y	On / Off	On* <sup>2</sup>
Emergency Control Input	Y	On / Off	On
General RM	Y	On / Off	On

\*<sup>1</sup> The speaker which is not connected to the VM-3000VA or VM-3000E is Off.

\*<sup>2</sup> VM-3000VA or VM-3000E which is not connected to the VX-2000DS in DS LINK is Off.

## 8. PRIORITY SETTINGS

Click the Menu item "Priority" button to display the priority setting screen.



- Pressing the "General Setting" button calls up the screen used to set sound source priorities for general broadcasting. (Refer to page 38.)
- Pressing the "Emergency Setting" button calls up the screen displaying sound source priorities for emergency broadcasting. (Refer to page 40.)

## 8.1. General Broadcast Sound Source Priority Settings

Pressing the "General Setting" button in the priority setting screen calls up the screen used to set sound source priorities for general broadcasting.

Set the input sound source priorities to be used for general broadcasting.



### (1) Input

Displays the VM-3000VA input sound sources (EV1-6 are built-in sound sources).

### (2) Name

Displays the names registered in VM-3000VA setting in the system settings (refer to "Audio input settings" on page 19). Note, however, that the names of EV1 to EV6 and VM-3000E (1) to (9) are fixed.

### (3) Priority

Sets general broadcasting sound source priorities. The lower the number, the higher the priority. The priority range possible for a given sound source will differ depending on its type.

Sound Source Type	Priority Setting Range	Default
INPUT 1 - 4	1 - 6, 7 (MIX)	6
EV1 - EV6 (built-in sound sources)	1 - 6	6
RM 1 - 4*	1 - 6	6
BGM 1 - 2	8 (BGM)	8 (BGM)
VM - 3000E (1) - (9)	1 - 6	6

\* The number of RM remote microphones will change depending on the settings.

See "General Broadcast Priorities" in the separate manual for more information on general broadcast priority settings.

### (4) Internal ATT., Master Volume

Volume adjustment operation for the internal attenuator (speaker output volume knob) and master volume control will differ depending on the priority levels.

Priority	Internal ATT.	Master volume
1, 2	Bypass	Bypass
3, 4	Bypass	Bypass
5, 6	Bypass	Enable
7 (MIX)	Enable	Enable
8 (BGM)	Enable	Enable

**Note:** External ATT. can not be used.

### (5) Priority Control

Selects how to assign priority among multiple general broadcast sound sources all set to the same priority level.

**Note**

It is not possible to specify a different control system for individual sound sources, or for individual priorities.

Available Settings	FIFO (first in first out), LIFO (last in first out, the default)
--------------------	--

## 8.2. Emergency Sound Source Priority Display

Pressing the "Emergency Setting" button on the Priority Settings screen displays the priority level of the input sound source to be used for emergency broadcasts.

### Note

Priorities are fixed and cannot be changed.



### (1) Input

Displays the VM-3000VA's emergency broadcast input source.

- "Fireman's Microphone" refers to the VM-3000VA's front panel-mounted emergency microphone.
- "EV1" and "EV2" are built-in sound sources.

### (2) Name

Displays the name of the VM-3000VA's emergency broadcast input sound source. For the RM-300MF, the name registered in the VM-3000VA Settings in the System Settings (refer to [page 19](#); "Audio input settings") is displayed. The names "Fireman's Microphone" and "EV1-2" are fixed.

- "Evacuation EV" is an "Evacuation" message pre-recorded in the VM-3000VA.
- "Alert EV" is an "Alert" message pre-recorded in the VM-3000VA.



### (3) Priority

Indicates the priority level of the emergency sound source. This emergency priority level is fixed. The lower the number, the higher the priority.

Sound Source	Priority Level
Not used	1
Fireman's Microphone	2
Not used	3
EV 1 (Built-in Evacuation message)	4
EV 2 (Built-in Alert message)	5

### (4) Internal ATT., Master Volume

Displays the volume adjustment operation status of the internal attenuator (speaker output volume control) and master volume control when emergency broadcasts are made. Note that the message volume cannot be adjusted during emergency broadcast.

Sound Source	Internal ATT.	Master Volume
Fireman's Microphone	Bypass	
EV 1 (Built-in Evacuation message)		
EV 2 (Built-in Alert message)		

**Note:** External ATT. can not be used.

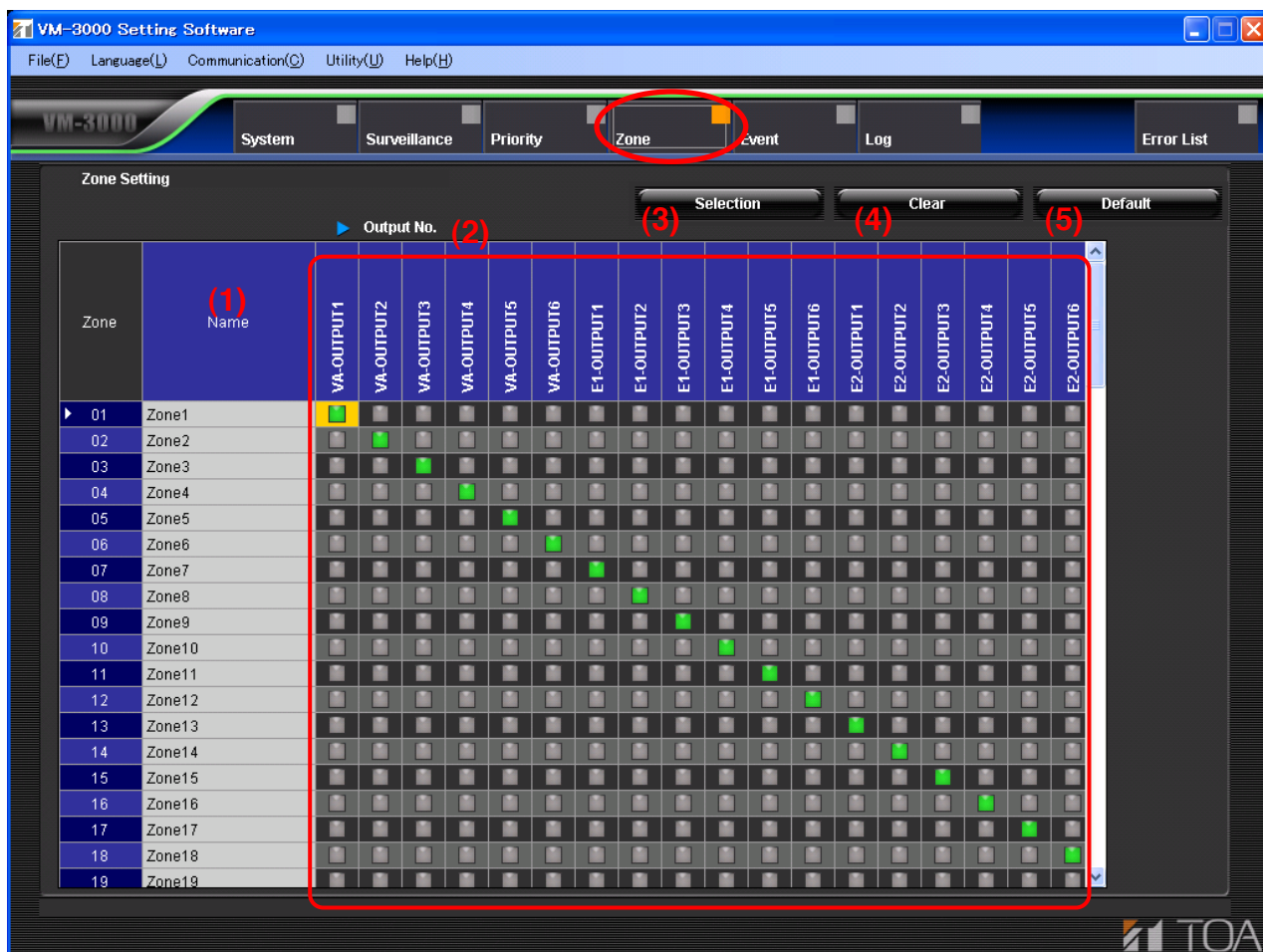
### (5) Priority Control

Since the emergency sound source's priorities are fixed, different priorities cannot be set for each emergency sound source.

## 9. ZONE SETTINGS

Clicking the Menu item "Zone" button displays the Zone Setting screen.

Group multiple speaker lines for the VM-3000VA or VM-3000E and set the group as a broadcast zone. Up to 90 zones can be established.



### (1) Name

Sets the name for the zone.

Available Settings	16 alphanumeric characters (default name: Zone 1 – 90)
--------------------	--

### (2) Output setting button

Selects the output to be assigned to each zone.

Available Settings	Green: Output selected; Gray: Output not selected
--------------------	---

### (3) Selection button

Selects all outputs for an arbitrary zone.

Click any desired zone number (leftmost column of the table) to highlight its row. Pressing the "Selection" button in this situation simultaneously selects all outputs in the highlighted row.

### (4) Clear button

Clears all outputs selected for an arbitrary zone.

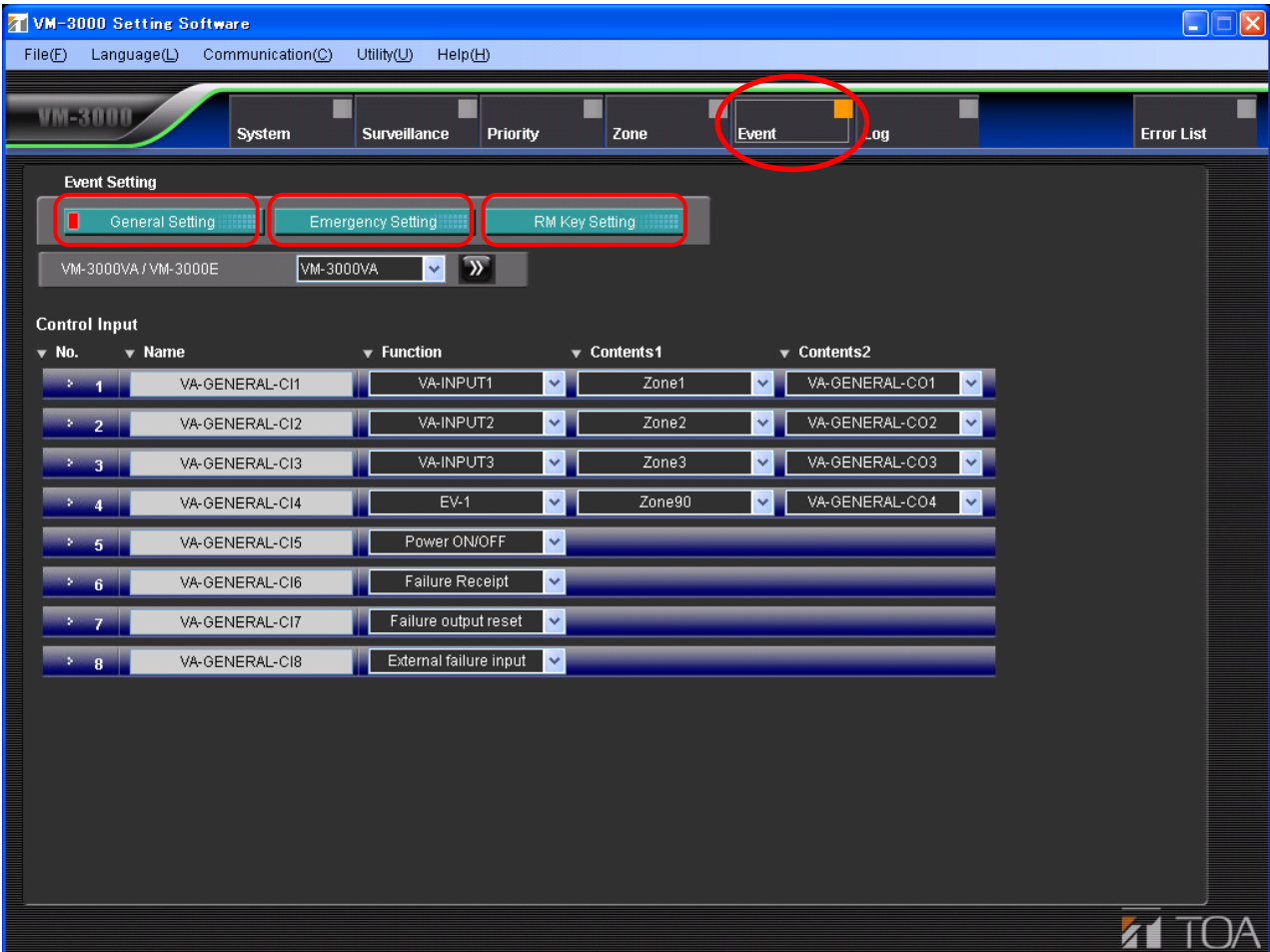
Click any desired zone number (leftmost column of the table) to highlight its row. Pressing the "Clear" button in this situation simultaneously deselects all outputs in the highlighted row.

### (5) Default button

Selects the speaker output with the same number as the zone number for all zones. (Example. Speaker output 1 is selected for Zone 1, speaker output 2 selected for Zone 2.... similarly for all other zones.) The screen above shows that the "Default" button has been pressed.

## 10. EVENT SETTINGS

Clicking the Menu item "Event" button displays the Event Settings screen.



- Pressing the "General Setting" button calls up the screen used to set general control inputs. (Refer to page 44.) Assign functions to the general control inputs for the VM-3000VA or VM-3000E.
- Pressing the "Emergency Setting" button calls up the screen used to set emergency control inputs. (Refer to page 47.) Confirm that the VM-3000VA's Emergency, Evacuation and Alert keys are displayed, then assign a function to each emergency control input for the VM-3000VA and VM-3000E.
- Pressing the "RM Key Setting" button displays the RM key setting screen. (Refer to page 49.) Assign a function to each key of the RM-200M.

## 10.1. General Control Input Settings

Pressing the "General Setting" button on the Event Setting screen displays the general control input setting screen.

Assign such functions to the general control inputs as broadcast activation and power ON/OFF control. When setting the broadcast activation function, also set the sound source and broadcast zone.



### (1) VM-3000VA/VM-3000E

Click the box or double-arrow button to select the VM-3000VA or VM-3000E to be set. The display switches to the setting screen for the selected model. (Note that the setting screen for the VM-3000VA is the same as that for the VM-3000E.)

### (2) No.

Represents the number of the general control input terminal located on the rear panel of the VM-3000VA or VM-3000E.

### (3) Name

Sets the name for the general control input.

Available Settings	16 alphanumeric characters (default name: "VA-GENERAL-CI*" for the VM-3000VA and "E#-GENERAL-CI*" for the VM-3000E, in which "#" is an ordinal number and "*" is the terminal number.)
--------------------	--

**(4) Function**

Sets the function.

When a sound source is selected, only the sound source with priority level set for 1 – 6 in the general broadcast sound source priority settings (page 38) can be set.

**Note**

In the case of the VM-3000E having the local input, this function is fixed. (Refer to the next page.)

Available Settings	Disable (default), VA-Input 1 – 4, EV1-6, Power ON/OFF, Failure Receipt, Failure output reset, External failure input
--------------------	---

**(5) Contents 1**

- Used to set broadcast zone when "VA - Input 1 - 4" or "EV1 - 6" has been selected in (4) Function settings.

When a broadcast zone is selected, only the zones registered in the Zone setting (page 42) can be set.

Available Settings	Disable (default), Zone 1 – 90, VA-OUTPUT1-6, E#-OUTPUT1-6 ("#" is an ordinal number)
--------------------	---

- Cannot be used when "Disable," "Power ON/OFF," "Failure Receipt," "Failure output reset," or "External failure input" has been selected in (4) Function settings.

**(6) Contents 2**

- Set the control output to be activated in synchronization with broadcasts when "VA - Input 1 - 4" or "EV1 - 6" has been selected in (4) Function settings. The control outputs of the VM-3000VA (refer to page 22; "Control output settings") or the VM-3000E (refer to page 28; "Control output settings") selected in the System settings can be set.

Available Settings	Disable (default), VA-GENERAL-CO* and E#-GENERAL-CO*" in which "#" is an ordinal number and "*" is the terminal number.
--------------------	---

- Cannot be used when "Disable," "Power ON/OFF," "Failure Receipt," "Failure output reset," or "External failure input" has been selected in (4) Function settings.

### [Function setting for the VM-3000E having the local input]

In the case of the VM-3000E having the local input, functions assigned to the unit's individual general control inputs are fixed as follows, and cannot be changed to any other function.

General Control Input 1: Allows for broadcasts to the corresponding VM-3000E's OUTPUT 1.

General Control Input 2: Allows for broadcasts to the corresponding VM-3000E's OUTPUT 2.

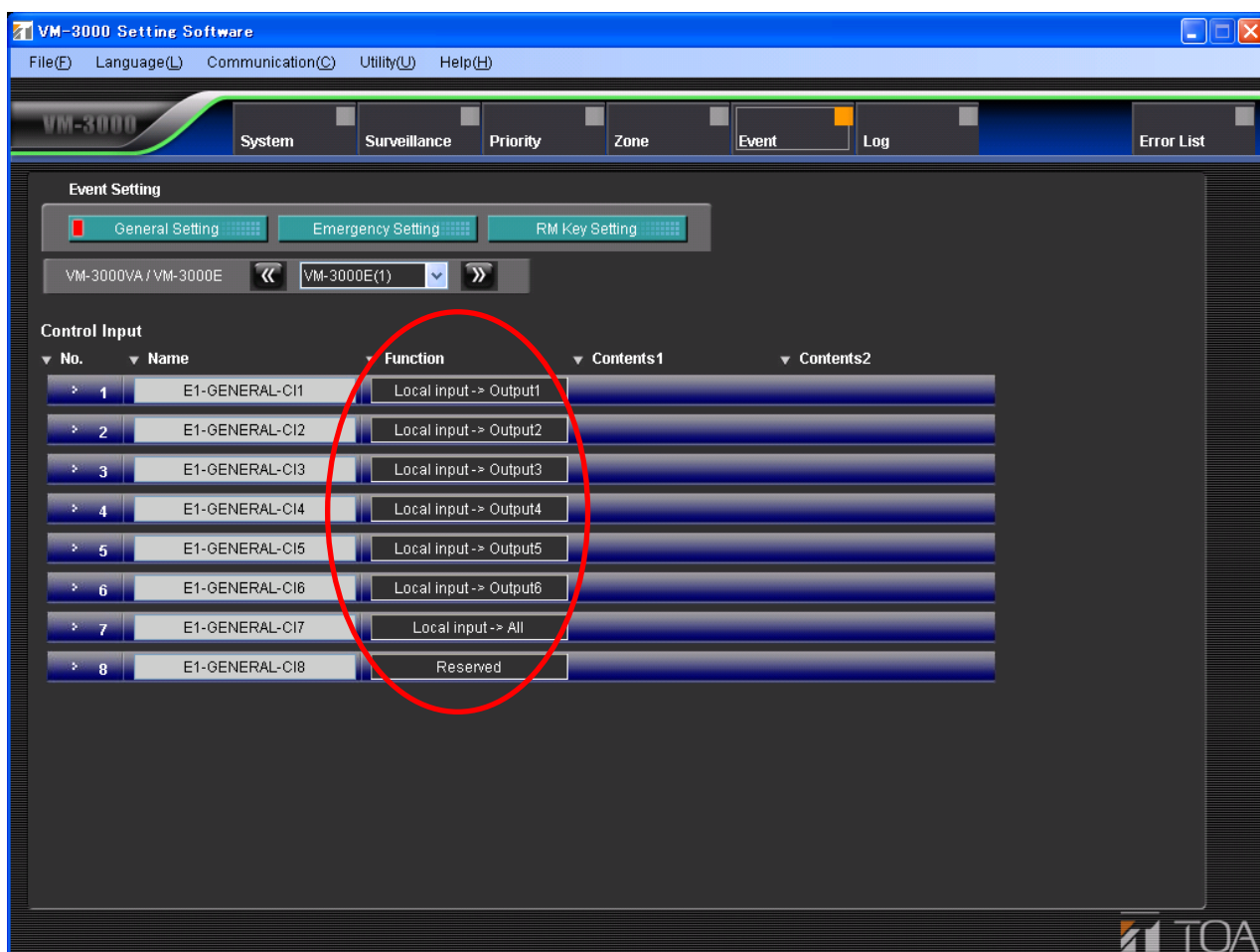
⋮

General Control Input 6: Allows for broadcasts to the corresponding VM-3000E's OUTPUT 6.

General Control Input 7: Allows for broadcasts to the corresponding VM-3000E's all OUTPUTS 1 - 6.

General Control Input 8: Not used

(VM-3000E's General Control Input Setting screen)



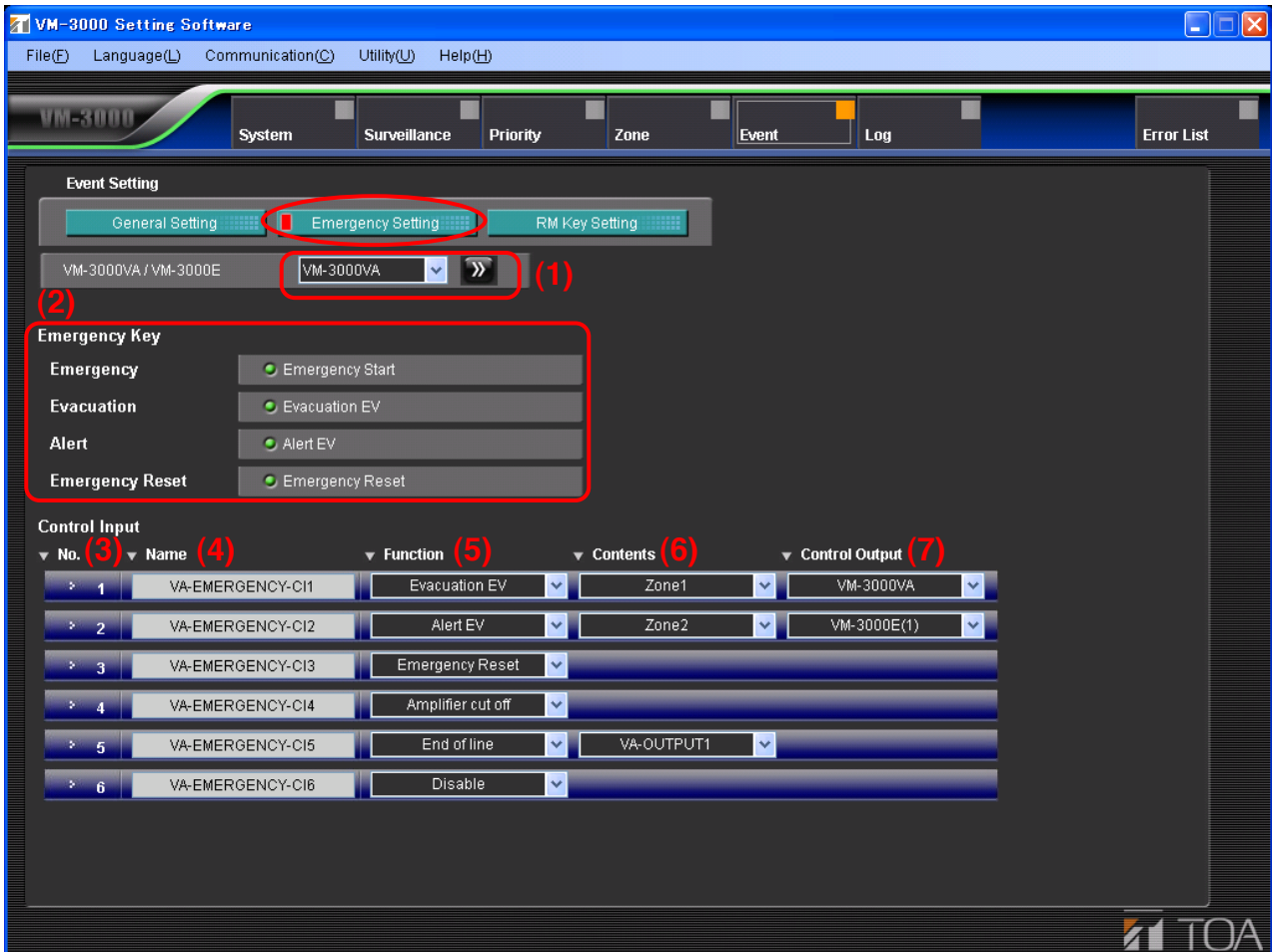
## 10.2. Emergency Control Input Settings

Pressing the "Emergency Setting" button on the Event Setting screen displays the emergency control input setting screen.

Set whether or not to use the VM-3000VA's Emergency, Evacuation, and Alert keys.

Assign such functions to the emergency control inputs as broadcast activation function.

When setting the broadcast activation function, also set the sound source and broadcast zones.



### (1) VM-3000VA/VM-3000E

Click the box or double-arrow button to select the VM-3000VA or VM-3000E to be set. The display switches to the setting screen for the selected model. (Note that the setting screen for the VM-3000VA is the same as that for the VM-3000E.)

### (2) Emergency Key Functions (Applicable only to the VM-3000VA) (Must be set to on according to UL2572 and CAN/ULC-S576.)

Set the functions of the VM-3000VA's front panel-mounted keys related to emergency broadcasts.

Each function of Emergency Start, Evacuation EV, and Alert EV can be switched to ON (indicated green) or OFF (indicated gray) with each click of the radio button.

### (3) No.

Represents the number of the emergency control input terminal located on the rear panel of the VM-3000VA or VM-3000E.

Inputs 1 to 5 are contact inputs while Input 6 is a voltage control input to be activated when the polarity of 24 V DC kept being normally applied is reversed.

**(4) Name**

Sets the name for the emergency control input.

Available Settings	16 alphanumeric characters (default name: "VA-EMERGENCY-CI*" for the VM-3000VA and "E#-EMERGENCY-CI*" for the VM-3000E, in which "#" is an ordinal number and "*" is the terminal number.
--------------------	---

**(5) Function**

Assigns a function to the emergency control input.

Available Settings	Disable (default), Evacuation EV, Alert EV, Emergency Reset, Amplifier cut off
--------------------	--

**(6) Contents**

- Cannot be used when "Disable", "Emergency Reset" or "Amplifier cut off" has been selected in (5) Function settings.
- Used to set broadcast zones or broadcast stop when "Evacuation EV" or "Alert EV" has been selected in (5) Function settings. Only the zones registered in the Zone Settings (page 42) can be set. When "Disable" is selected, the EV message is not broadcast though the system is placed in emergency mode.

Available Settings	Disable (default), Zone 1 – 90, STOP
--------------------	--------------------------------------

**(7) Control Output**

- Cannot be set when "Disable," "Emergency Reset," or "Amplifier cut off" has been selected in (5) Function settings.
- If "Evacuation EV" or "Alert EV" has been selected in the Function settings (5), one emergency status output equipped with each VM-3000VA/3000E can be interlocked.

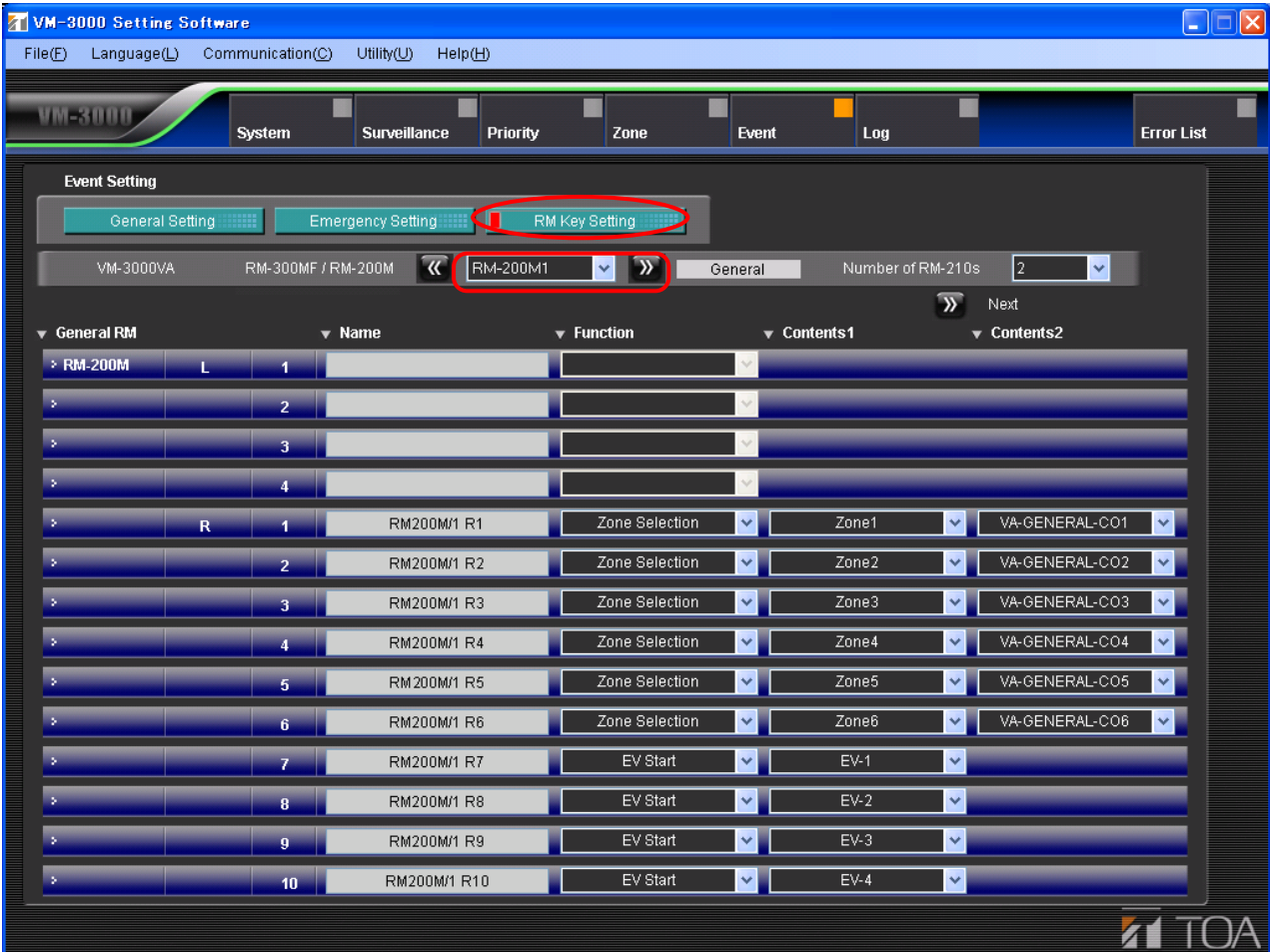
Available Settings	Disable (default), All, VM-3000VA, VM-3000E (#) ("#" is an ordinal number)
--------------------	---



### 10.3. RM Function Key Settings

Pressing the "RM Key Setting" button on the Event Setting screen displays the RM key setting screen. Assign the function to each remote microphone key.

Click the "RM-300MF/RM-200M" selection box or double-arrow button to select the RM-200M to be set.



If the RM-200M is selected, the screen for setting its key functions will be displayed. (Refer to page 50.)

### 10.3.1. RM-200M settings

Clicking the "RM-300MF/RM-200M" selection box or double-arrow button to select the RM-200M to be set displays the screen for setting its key functions.



#### (1) Number of RM-210s

Sets the number of RM-210 remote microphone expansion units. The [Next] button (7) can be used if the number of units is set to 1 or more.

Available Settings	0 – 4 (default: 0)
--------------------	--------------------

#### Note

As the use of RM-210 is not certified to UL2572 and CAN/ULC-S576 for Mass Notification System, leave this value set to "0" (default).

#### (2) General RM

Displays the model number (RM-200M) and the key number of the remote microphone being set.

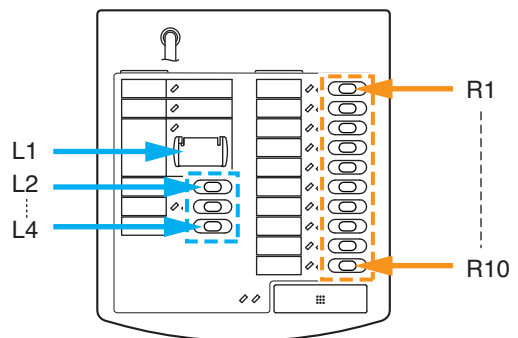
#### Note

Keys L1 - L4 cannot be used.



Model number of the remote microphone being set.

Key number



**(3) Name**

Sets the name for the key.

**Note**

Keys L1 – L4 are not used, however only their names can be set.

Available Settings	16 alphanumeric characters (default name: RM200M/#R*, in which [#] is the RM-200M's ID number and [*] is the key number.)
--------------------	---

**(4) Function**

Sets the function to be assigned to the key.

Available Settings	Disable (default), Zone Selection, EV Start
--------------------	---

**(5) Contents 1**

Cannot be used when "Disable" has been selected in the Function settings (4).

Used to set broadcast zones when "Zone Selection" is selected in (4) Function settings. Only the zones registered in the [Zone settings \(page 42\)](#) can be set.

Available Settings	Disable (default), Zone 1 – 90
--------------------	--------------------------------

If "EV Start" has been selected in the function setting (4), set the desired EV (electronic voice announcing) message (built-in sound source).

Available Settings	EV-1 to EV-6 (default: EV-1)
--------------------	------------------------------

**(6) Contents 2**

Cannot be used when "Disable" and "EV Start" have been selected in the Function settings (4).

If "Zone Selection" has been selected in the Function settings (4), leave this item unchanged as "Disable."

Available Settings	Disable (default), VA-GENERAL-CI 1 - 8 and E#-GENERAL-CI 1 - 8, in which "#" is the ID number.
--------------------	--

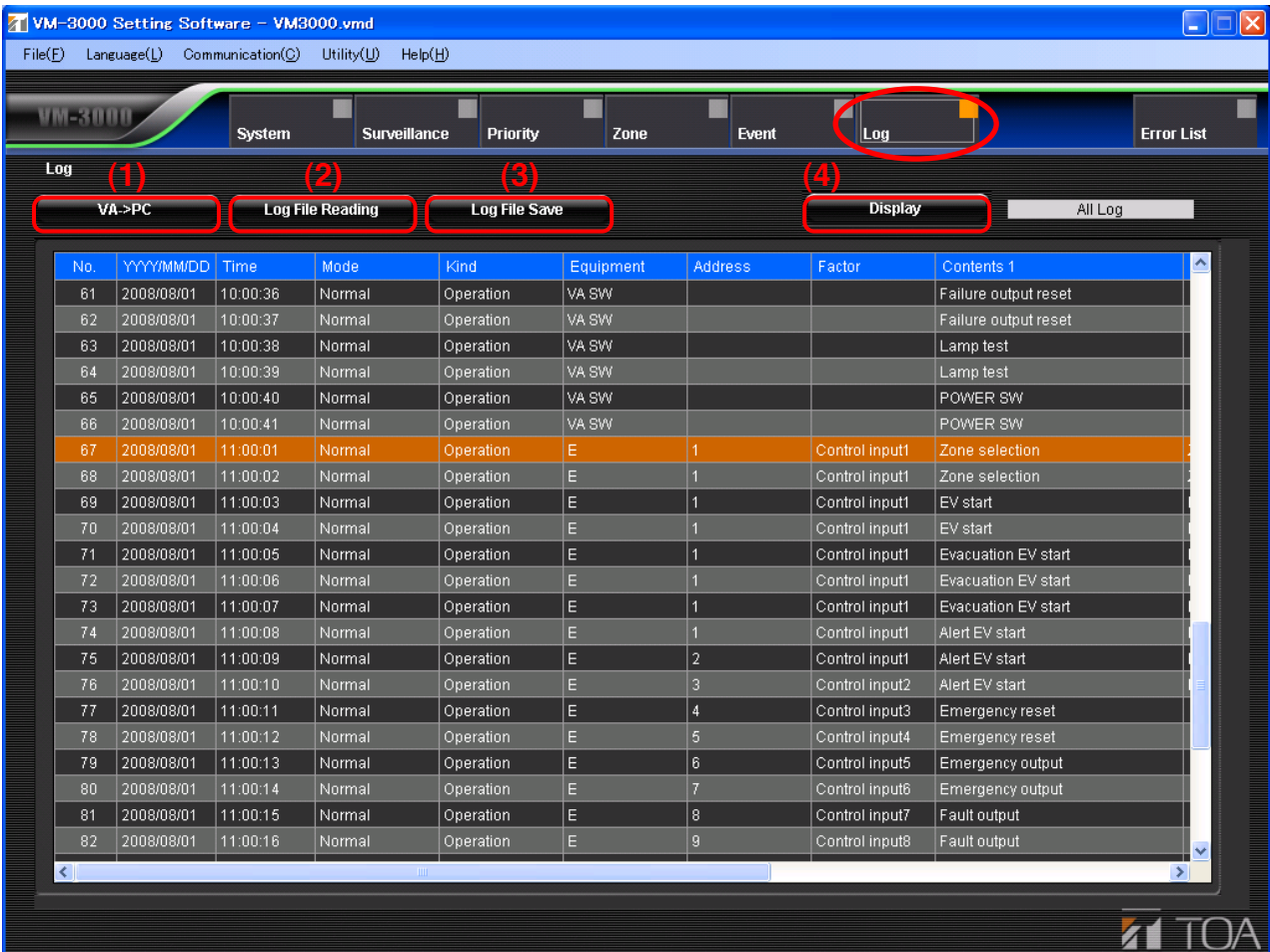
**(7) Next button**

Not used.

# 11. LOG DISPLAY

Clicking the Menu item [Log] button displays the log screen.

Operation histories recorded in the VM-3000 system can be displayed using setting software. It is also possible to save displayed log data to a PC and read it from the PC. There are two types of log data: one that records all operations (All Log) and one that only records failures (Failure Log). A total of up to 1,000 histories can be recorded for both operation and failure logs, but up to 100 histories out of them can be recorded for failure logs.



## (1) VA -> PC button

Used to load log data from the VM-3000VA to a PC.

### Note

Since this operation is conducted with the VM-3000VA connected to the PC, be sure network settings are performed in advance (page 70). Further, log data transfer operation is required on the VM-3000VA as well. For more information, please read "Configuration Settings" in the separately issued instruction manual.

## (2) Log File Reading button

Reads out log data stored in the PC.

Press the "Log File Reading" button to select and read the log files stored in the PC.

## (3) Log File Save button

Used to save log files to a PC.

Press the "Log File Save" button. As the screen designating the destination to save is displayed, save the log file.

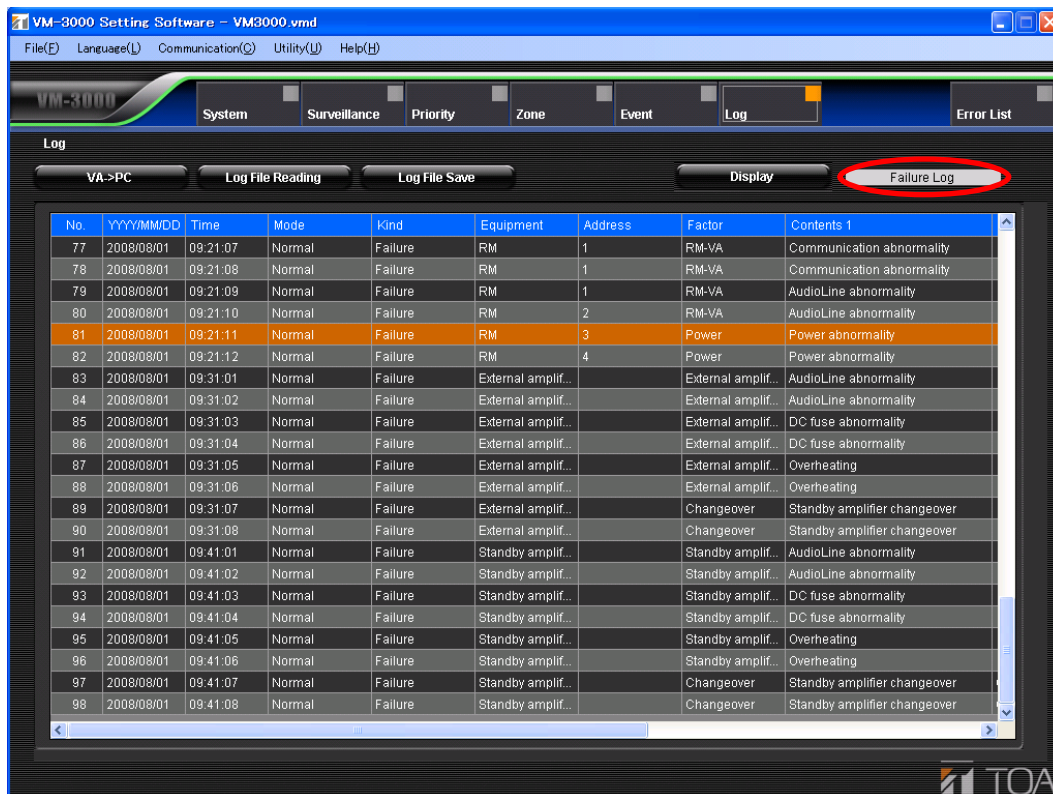
#### (4) Display button

The display switches between the All Log screen (upper figure) and the Failure Log screen (lower figure) each time this button is pressed.

All Log screen

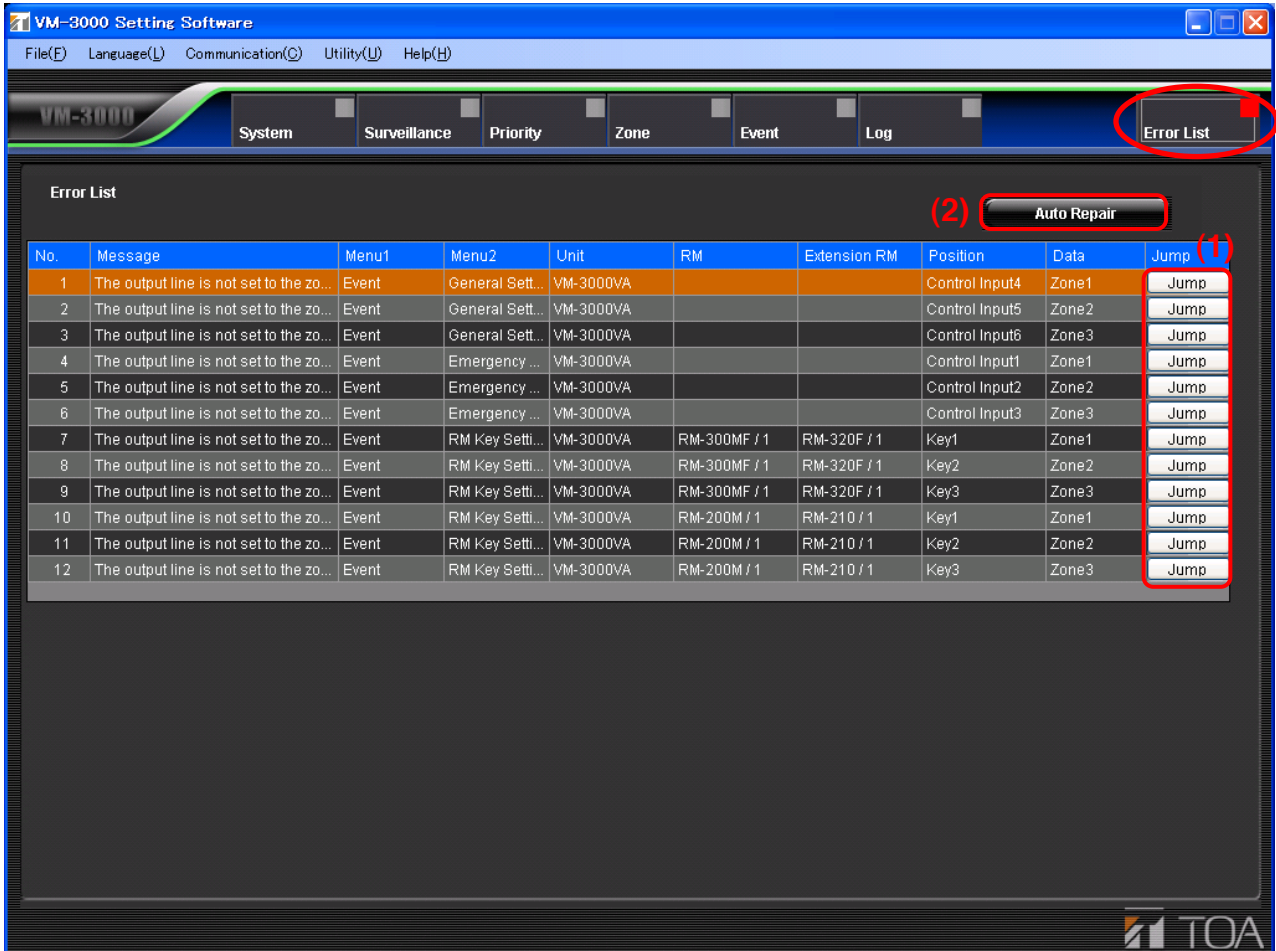


Failure Log screen



## 12. ERROR LIST DISPLAY

Pressing the Menu item "Error List" button displays the error list screen that shows errors and other discrepancies detected in the set data. By displaying the settings correction screen, individual data can be corrected or all data corrected at once.



### (1) Jump button

The display switches to the settings correction screen and all data that require correction are displayed in gray.

Press the "Error List" button again to return to the original error list screen after the correction is completed.

### (2) Auto Repair button

Used to automatically correct all displayed data at once.

Press this button if simultaneous correction is found to be possible after confirming each data item by pressing the "Jump" button. This button is convenient when multiple identical errors (example: incorrect settings for the number of RM-200M units) are displayed in the list.

### Note

If errors of different causes exist together, unexpected items could also be automatically corrected. In such cases, correct each data item manually using the "Jump" button.



# 13. MENU ITEM OPERATIONS FROM THE MENU BAR

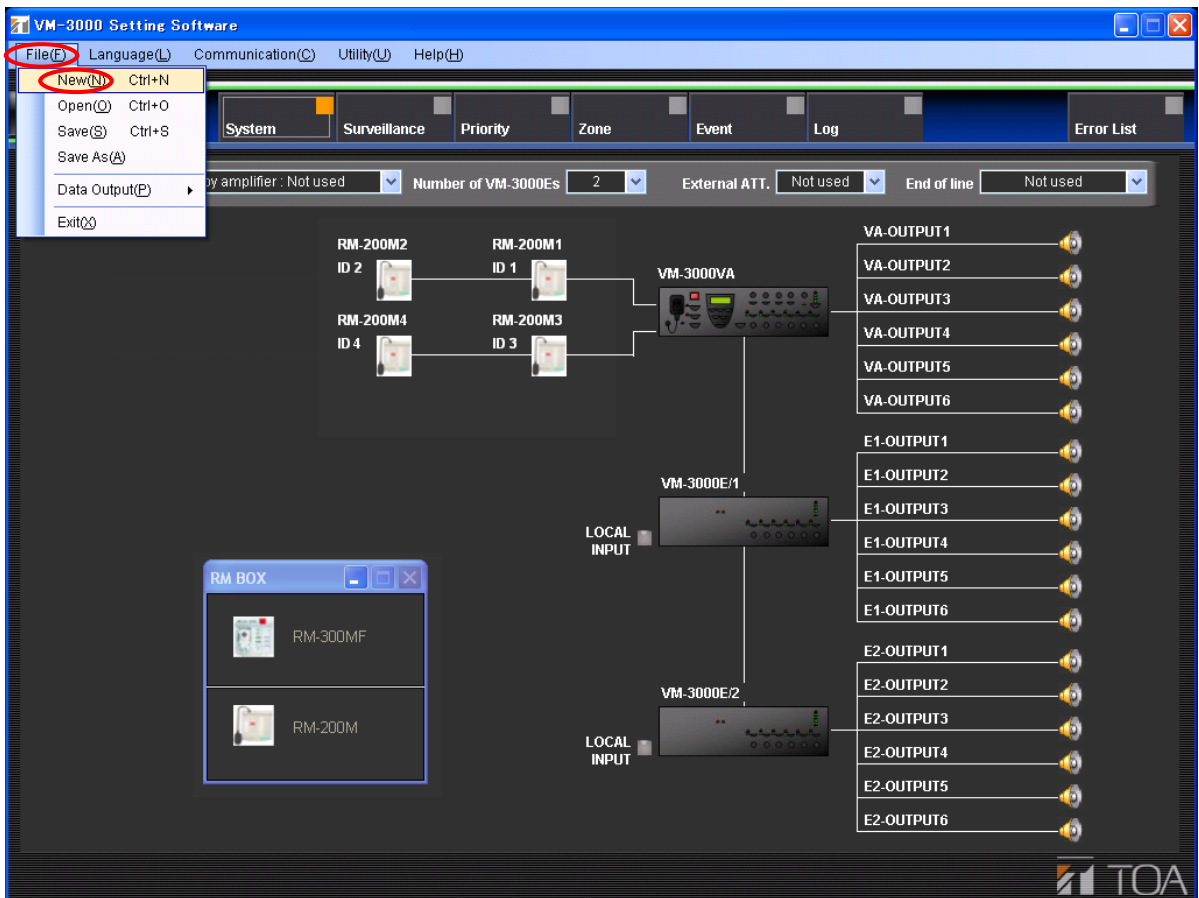
## 13.1. Creating a New Setting File

Abandon the currently-set data and create a new one.

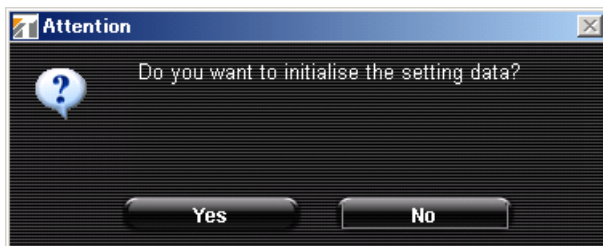
### Note

When creating a new file partway through a setting, save the data being set as required. (Refer to "Saving Set Files" on page 59.) Creating a new file without saving causes the data that was edited just before the start of new file creation to be deleted.

**Step 1.** Select [File → New] from the menu bar of the Setting Software screen.



A confirmation dialog will be displayed.

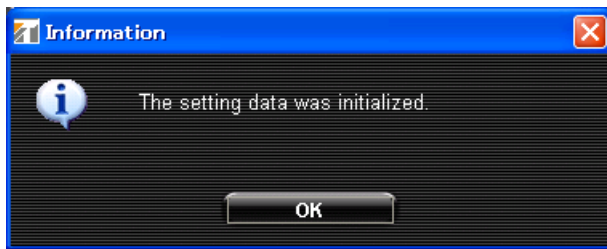


**Step 2.** Click the "Yes" button.

Currently-set data will be initialized.

**Note:** Pressing the "No" button returns the display to the currently-displayed setting screen.

The following screen is displayed after completion of initialization.



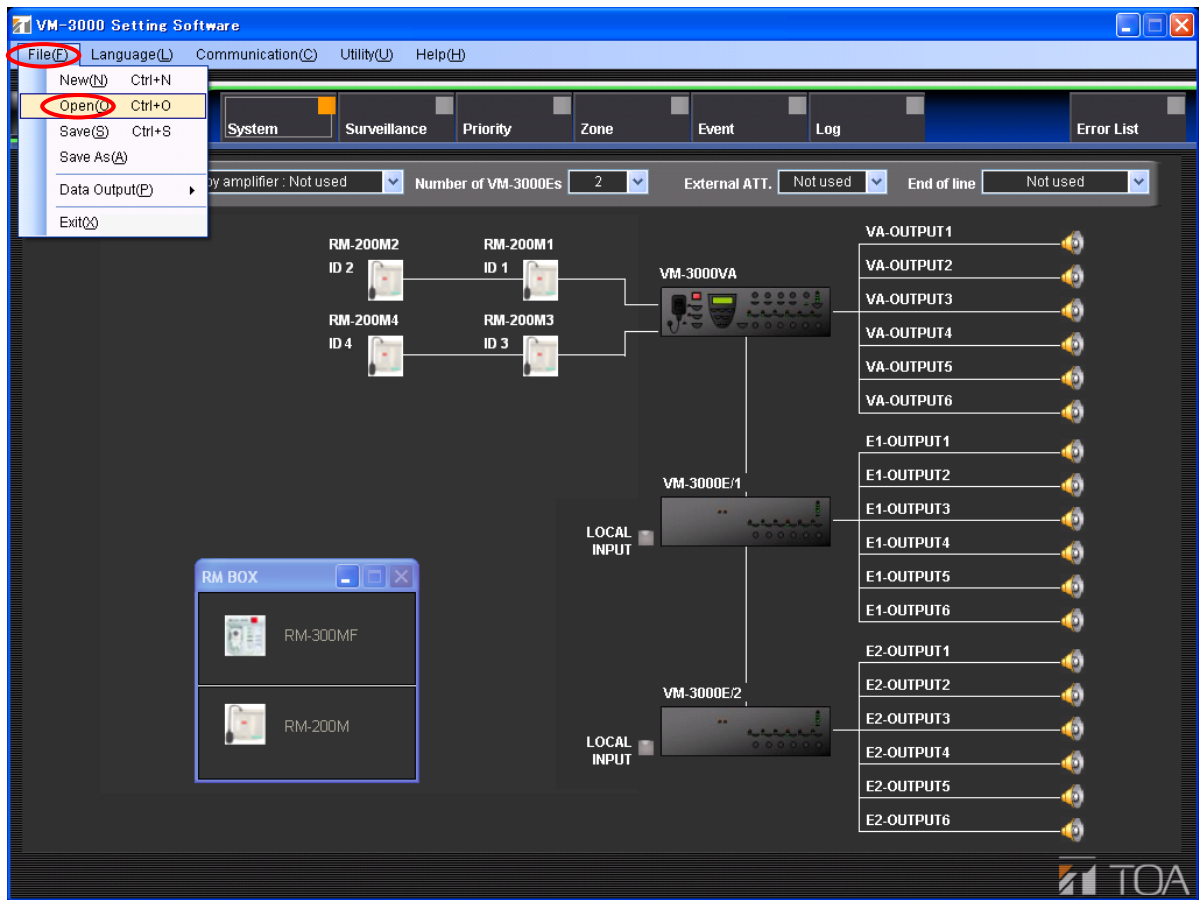
Pressing the "OK" button displays the screen for new setting file creation.



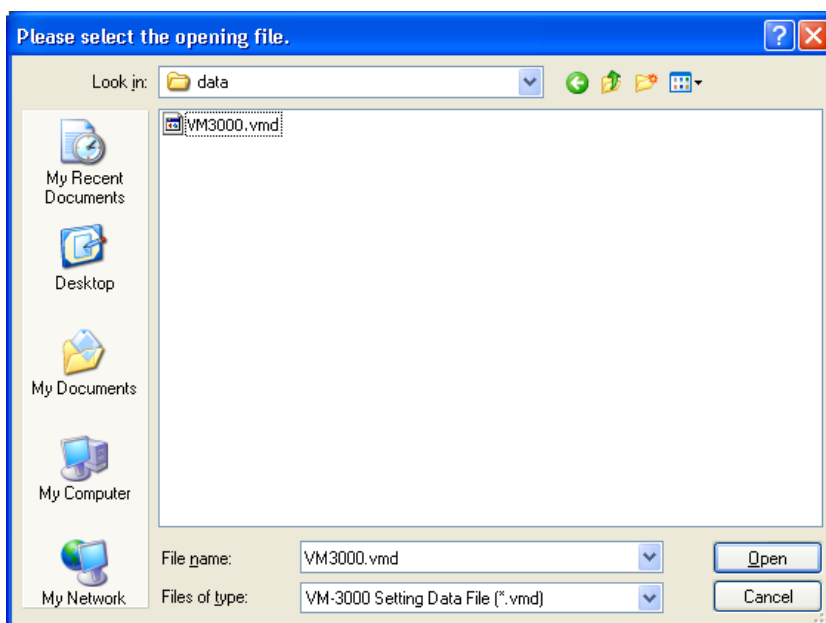
## 13.2. Loading Set Files

Load the PC-stored set data file into the setting software.

**Step 1.** Select [File → Open] from the menu bar of the Setting Software screen.

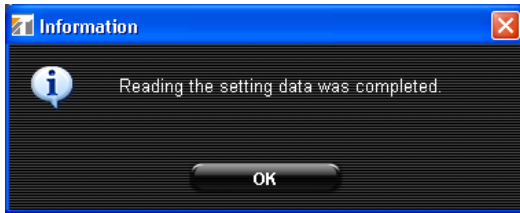


A dialog for opening the set file will be displayed.



**Step 2.** Select the desired file and click the "Open" button.  
Loading of the selected set file will begin.

The following screen is displayed after completion of loading.



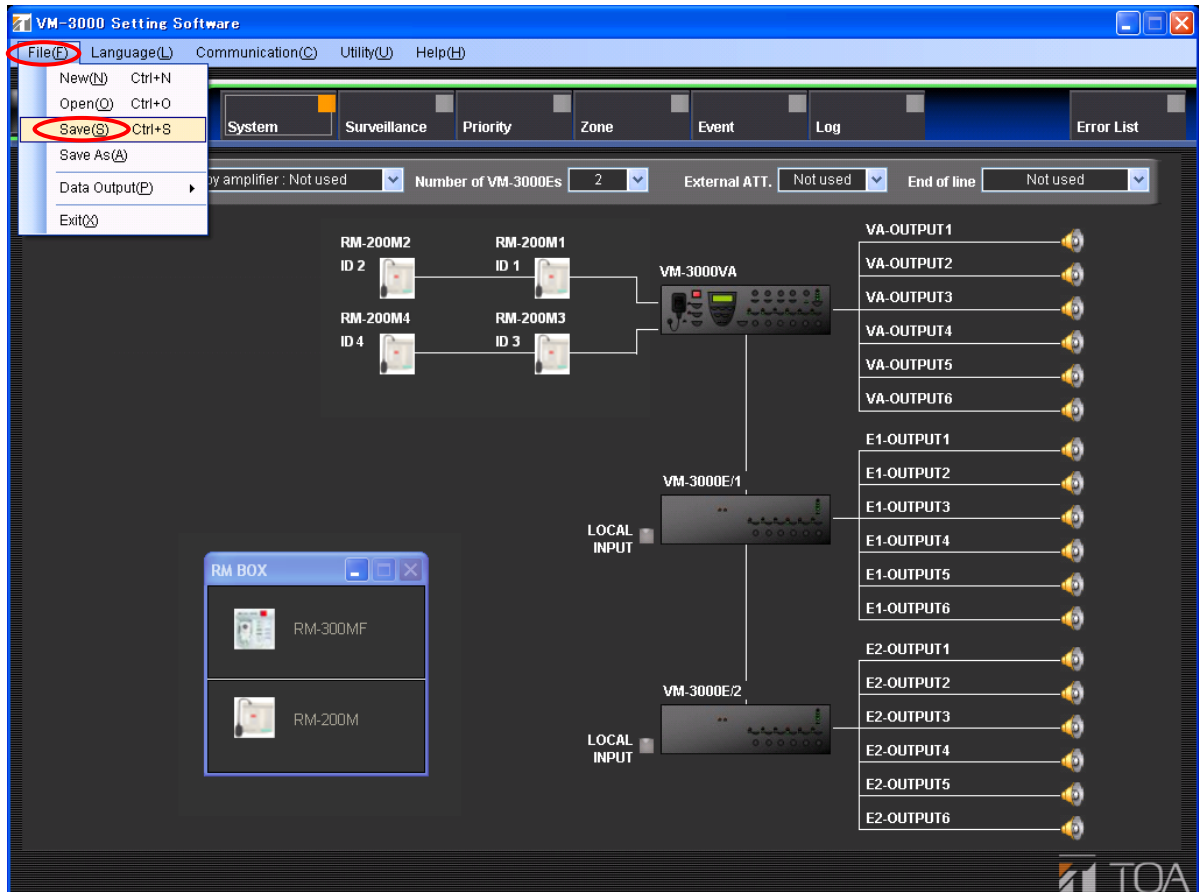
**Step 3.** Press the "OK" button.  
The current display switches to the screen for the loaded file.

## 13.3. Saving Set Files

Output the software-edited data in data format (.vmd) to be used in the VM-3000 system.

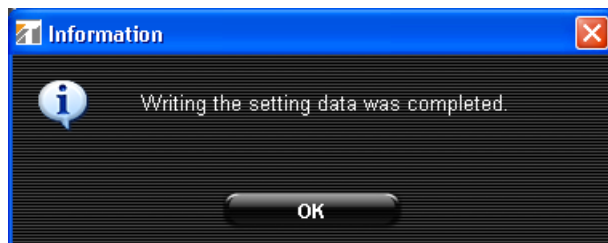
### 13.3.1. Overwriting an existing file

**Step 1.** Select [File → Save] from the menu bar of the Setting Software screen.



The currently-opened file is overwritten and saved.

The following screen is displayed after save completion.

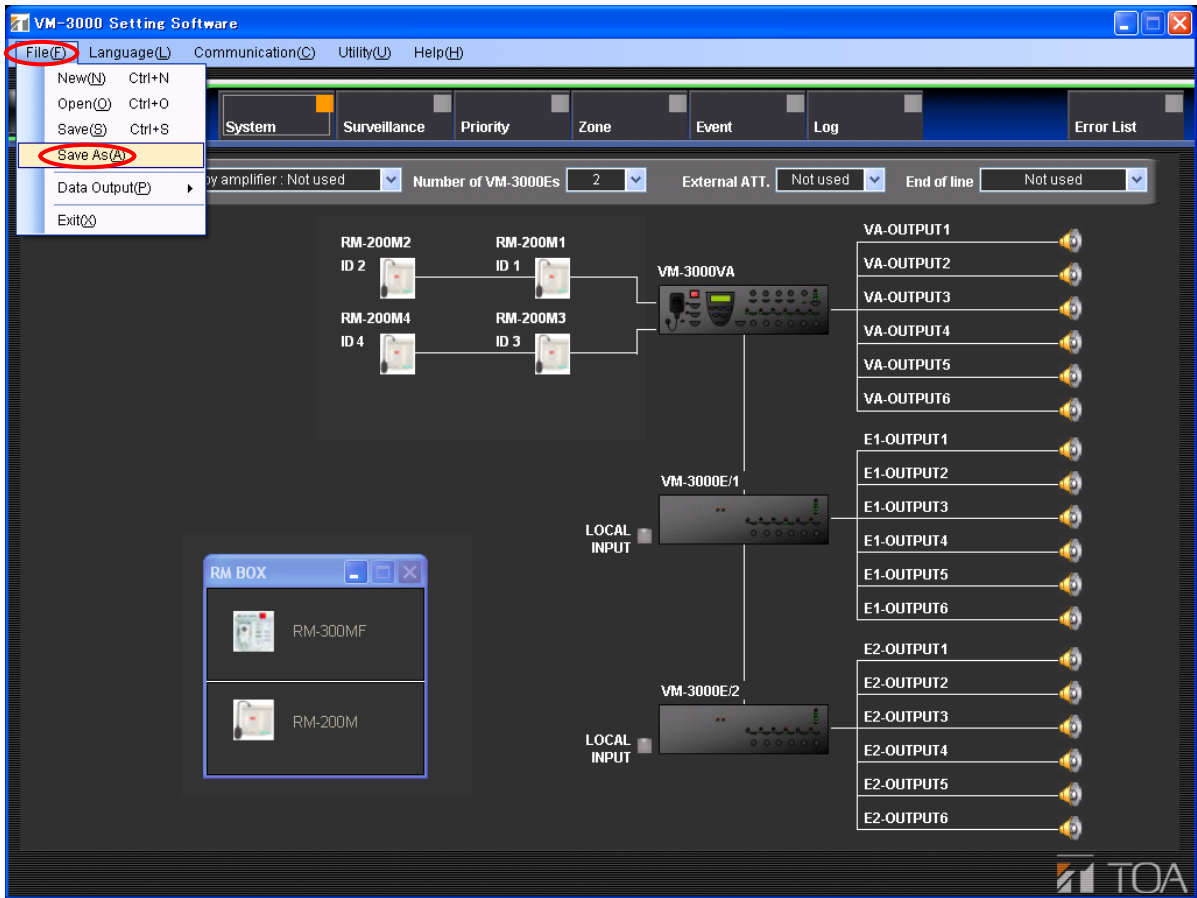


**Step 2.** Press the "OK" button.

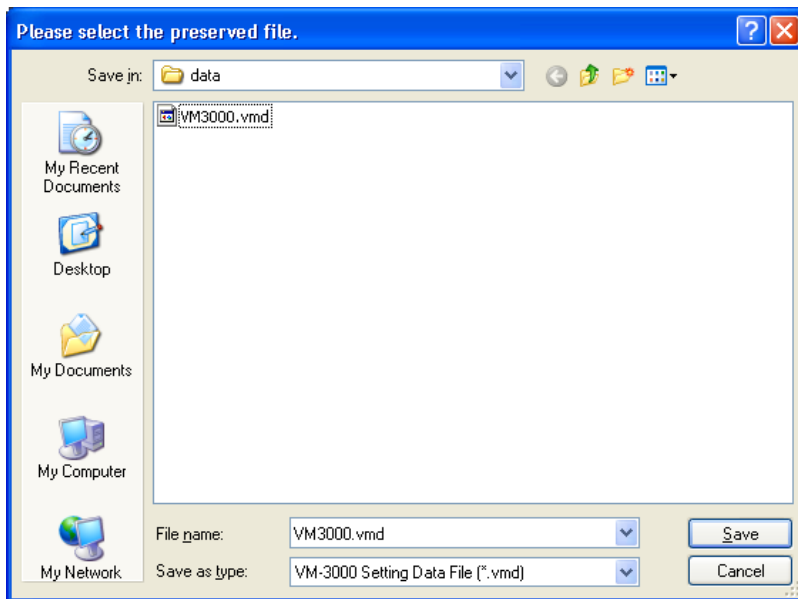
The display returns to the currently displayed screen.

### 13.3.2. Saving new set files

**Step 1.** Select [File → Save As] from the menu bar of the Setting Software screen.



A dialog for designating the destination for the set file will be displayed.



**Step 2.** Assign a filename. (Default name: VM3000.vmd)

**Note**

When changing the filename, be sure to include the correct filename extension (.vmd).  
(Example: Set file.vmd)

**Step 3.** Click the "Save" button.

The following screen is displayed after save completion.



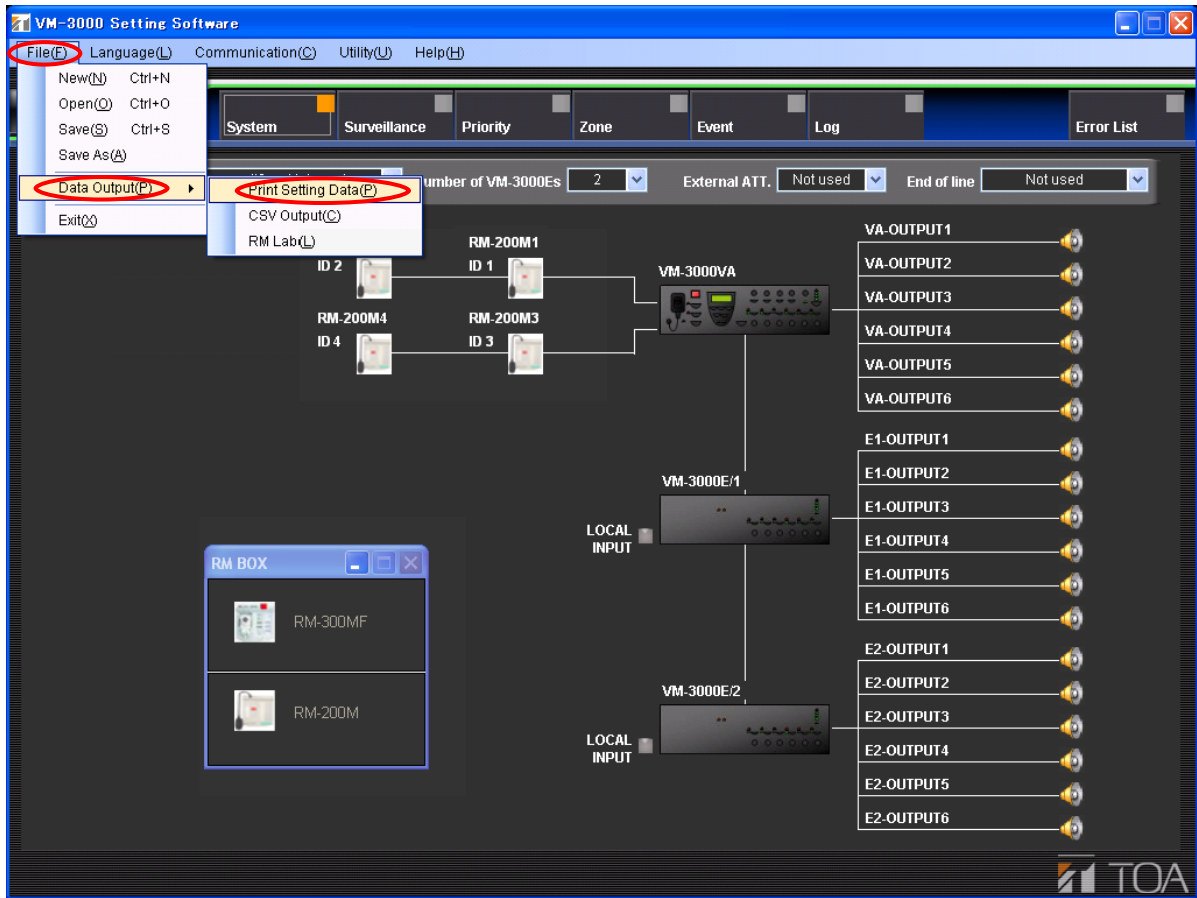
**Step 4.** Press the "OK" button.

The display returns to the currently displayed screen.

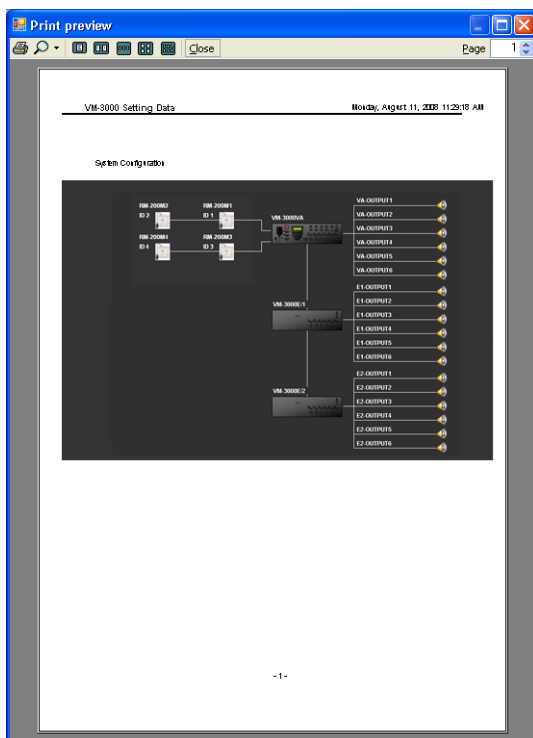
### 13.4. Printing Set Data

Print the set data.

**Step 1.** Select [File → Data Output → Print Setting Data] from the menu bar of the Setting Software screen.

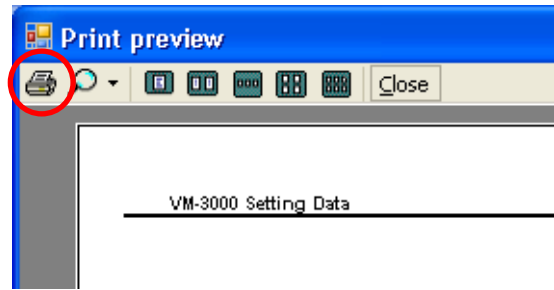


The print preview for the set data will be displayed.



The print preview of the system configuration shown at left is printed, followed by a list showing the set content (its previewed screen is omitted).

**Step 2.** Click the printer icon.  
The print setting screen will be displayed.

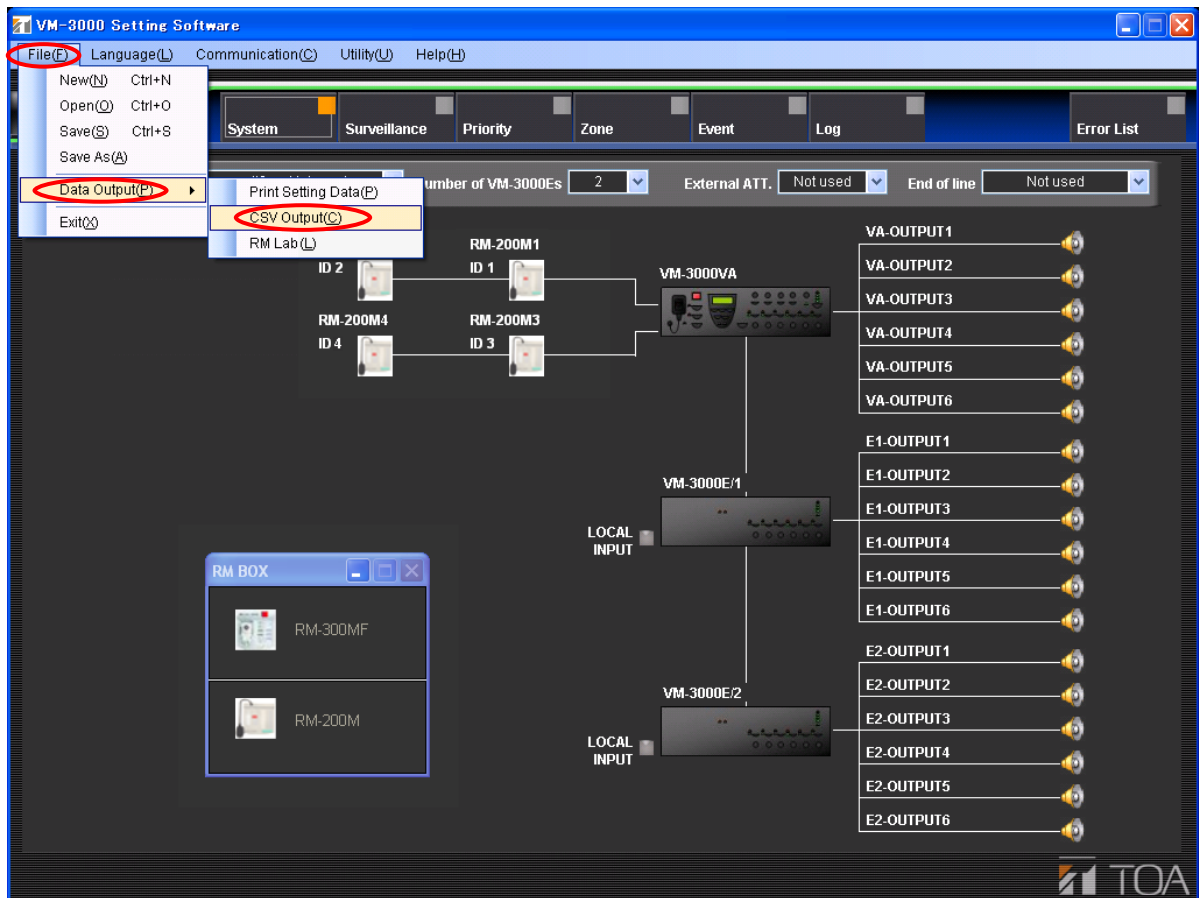


**Step 3.** Perform printing setting, then print the set data.  
The display returns to the currently displayed screen after print completion.

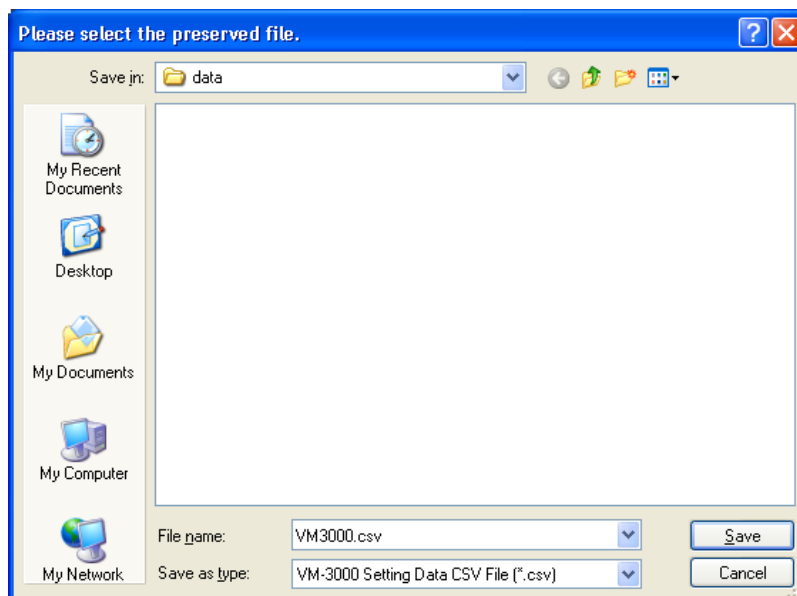
## 13.5. Exporting Printed Data in CSV Format

It is possible to output set data as a CSV format file for use in spreadsheet programs such as Microsoft Excel.

**Step 1.** Select [File → Data Output → CSV Output] from the menu bar of the Setting Software screen.



A dialog for designating the destination for the set file is displayed.



**Step 2.** Assign a filename. (Default name: VM3000.csv)

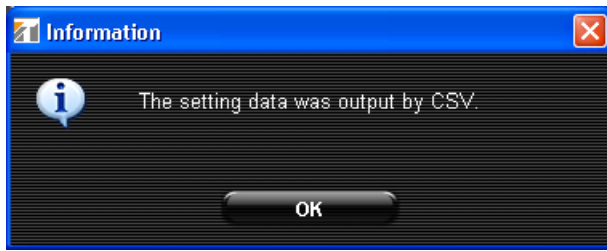
### Note

When changing the filename, be sure to include the correct filename extension (csv).  
(Example: Set file.csv)



**Step 3.** Click the "Save" button.

The following screen is displayed after save completion.



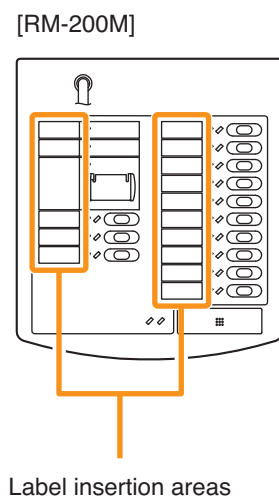
**Step 4.** Press the "OK" button.

The display returns to the currently displayed screen.

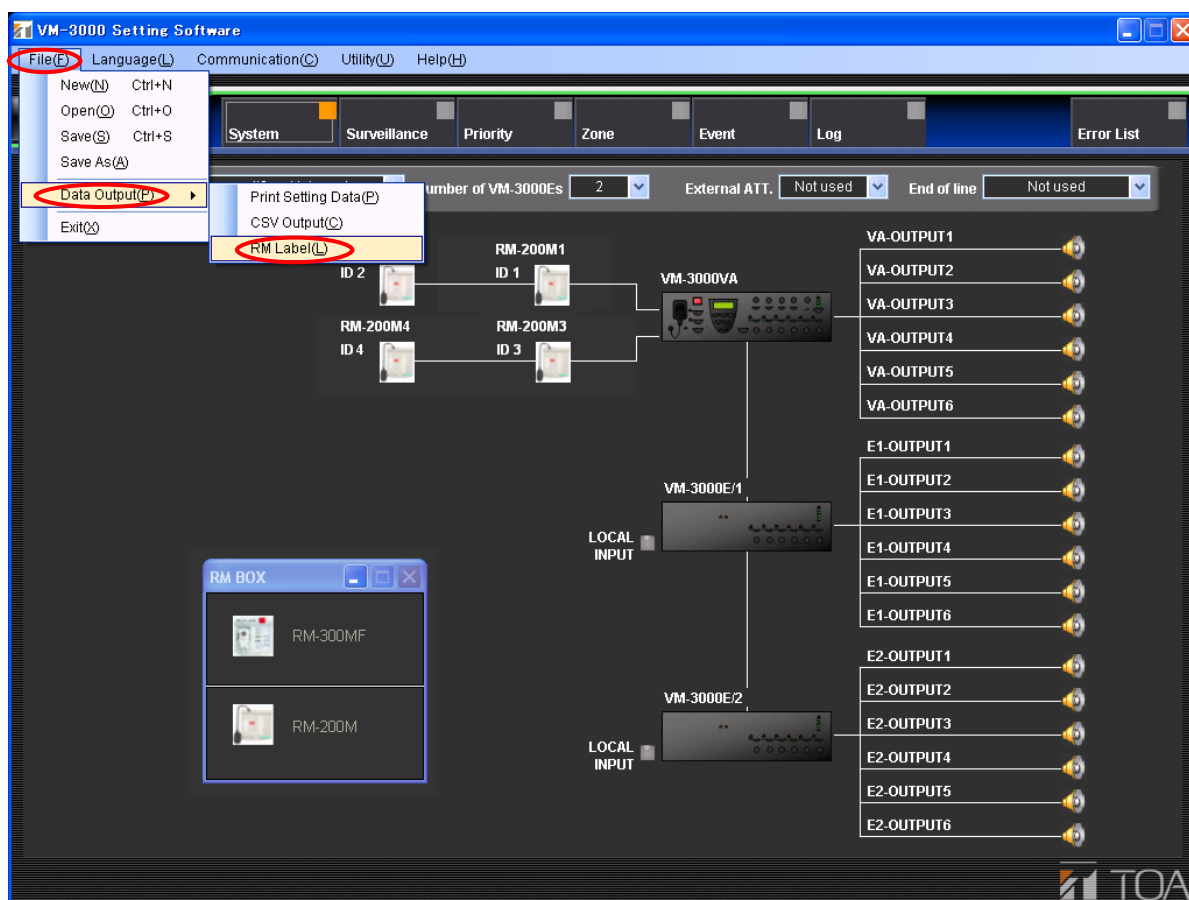
## 13.6. Printing Remote Microphone Labels

Remote microphone labels can be designed and printed.

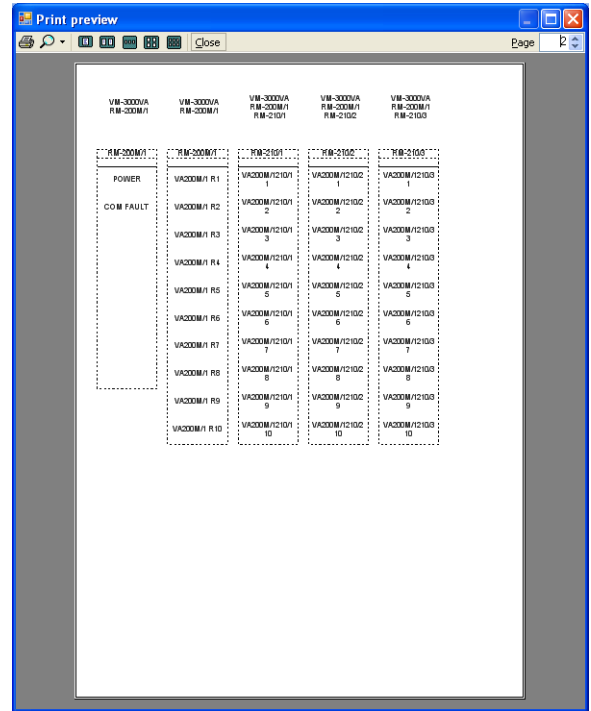
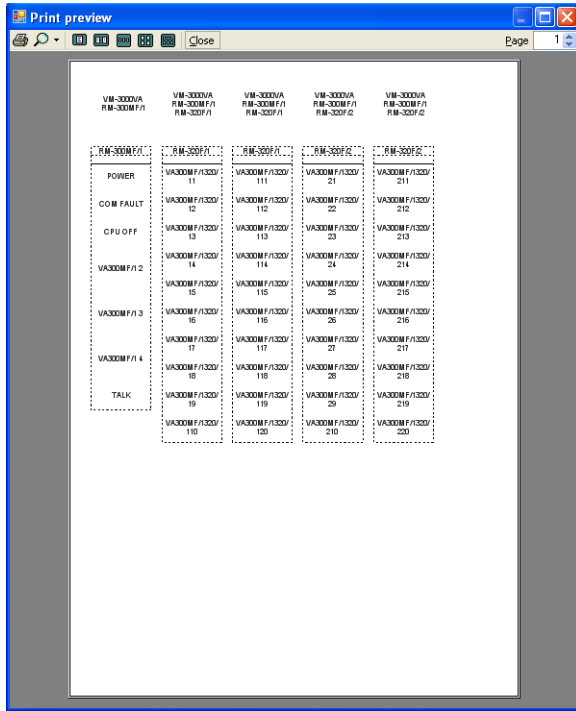
Print the label for the name assigned to the remote microphone key currently being set using the setting software.



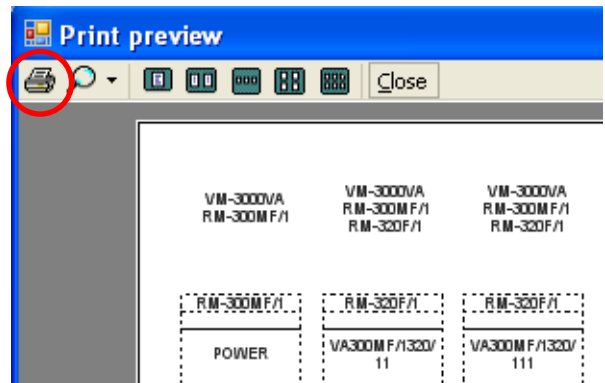
**Step 1.** Select "File → Data Output → RM Label" from the menu bar of the Setting Software screen.



The print preview for the printed labels of all connected remote microphones is displayed.



**Step 2.** Click the printer icon.  
The print setting screen will be displayed.



**Step 3.** Perform print settings and print out the page.

**Notes**

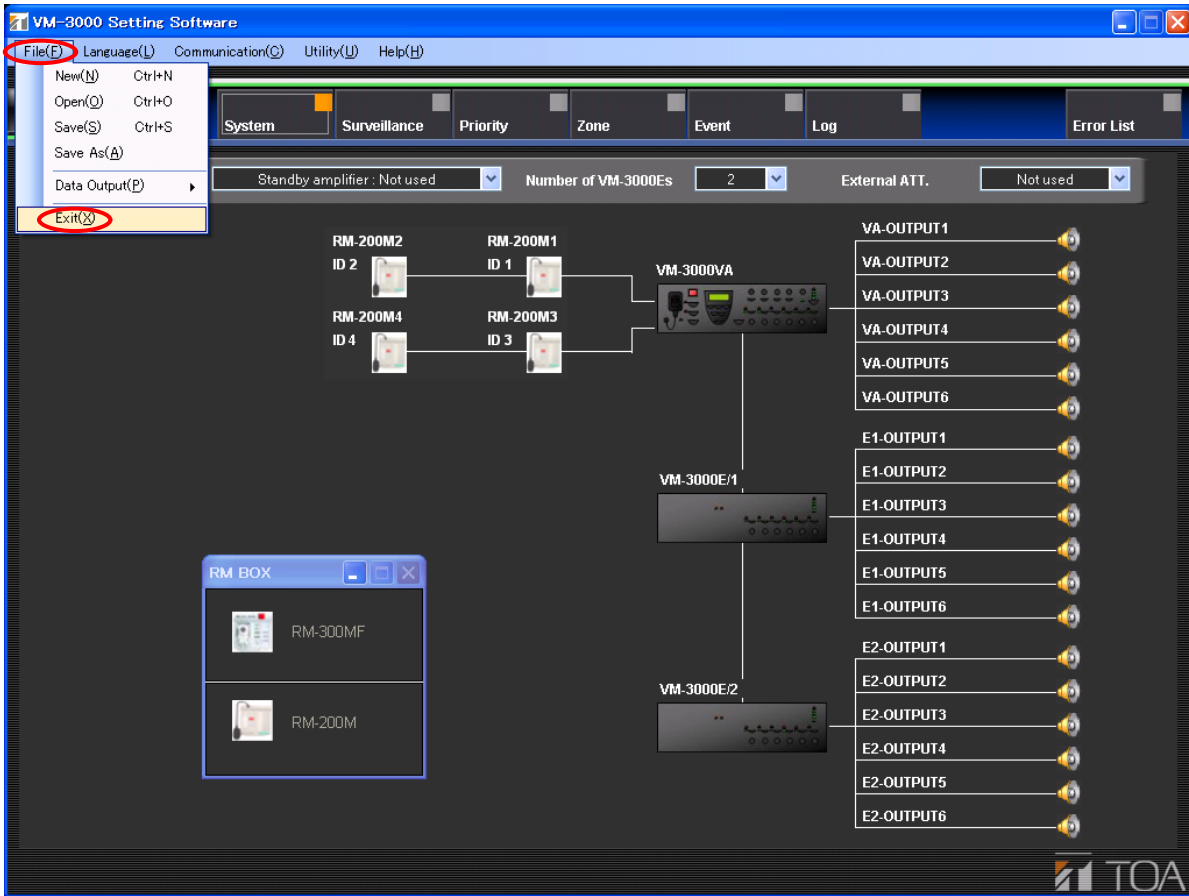
- Depending upon the type of printer used, the printed results of the output area or label width may differ.
- Use paper less than 0.2 mm thick.

The display returns to the currently displayed screen after print completion.

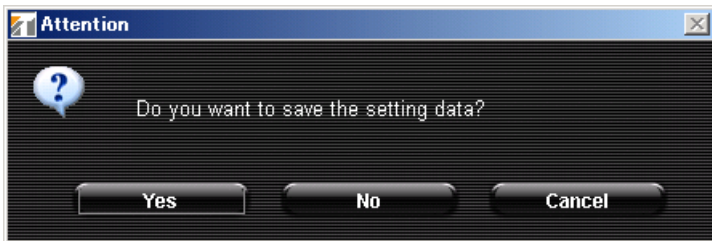
### 13.7. Exiting Setting Software

Exit the setting software after completing all settings and required file output production.

Select "File → Exit" from the menu bar of the Setting Software screen.



If the set data has not been saved, the following dialog is displayed.



Pressing the "Yes" button displays a dialog for saving the set data. Assign a filename and save the data. (Refer to "Saving Set Files" on page 59.)

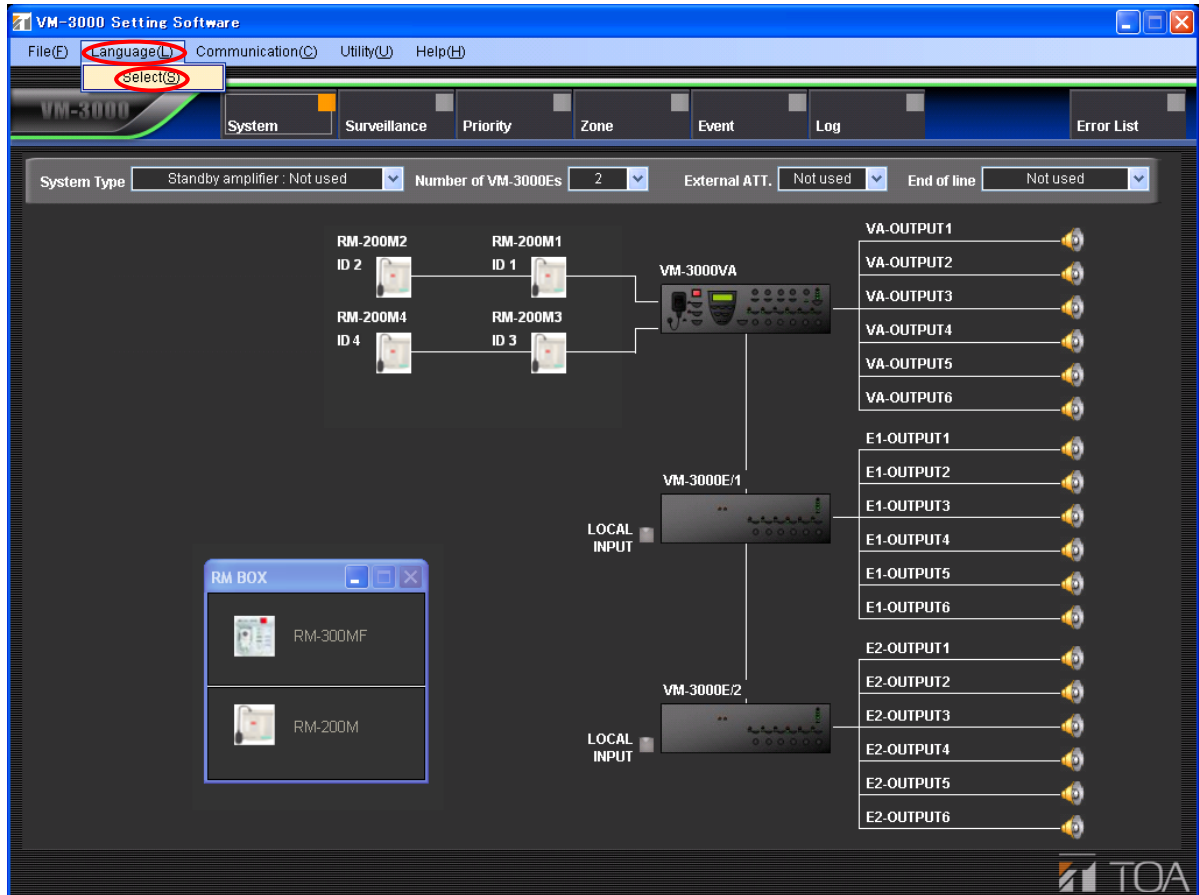
If the "No" button is pressed, the setting software is terminated without saving the set data.

Pressing the "Cancel" button returns the display to the currently displayed screen.

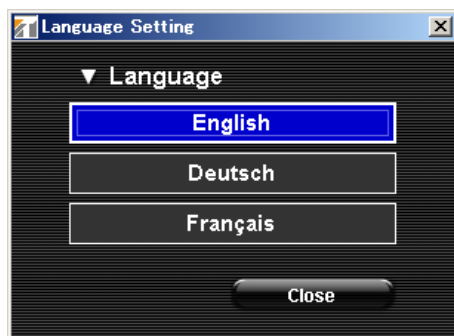
## 13.8. Selecting the Setting Software Display Language

It is possible to select the language to be used for displaying the setting software.

**Step 1.** Select "Language → Select" from the menu bar of the Setting Software screen.



The language selection screen is displayed.



**Step 2.** Select the desired language.  
The display switches to the selected language.

**Step 3.** Click the "Close" button.

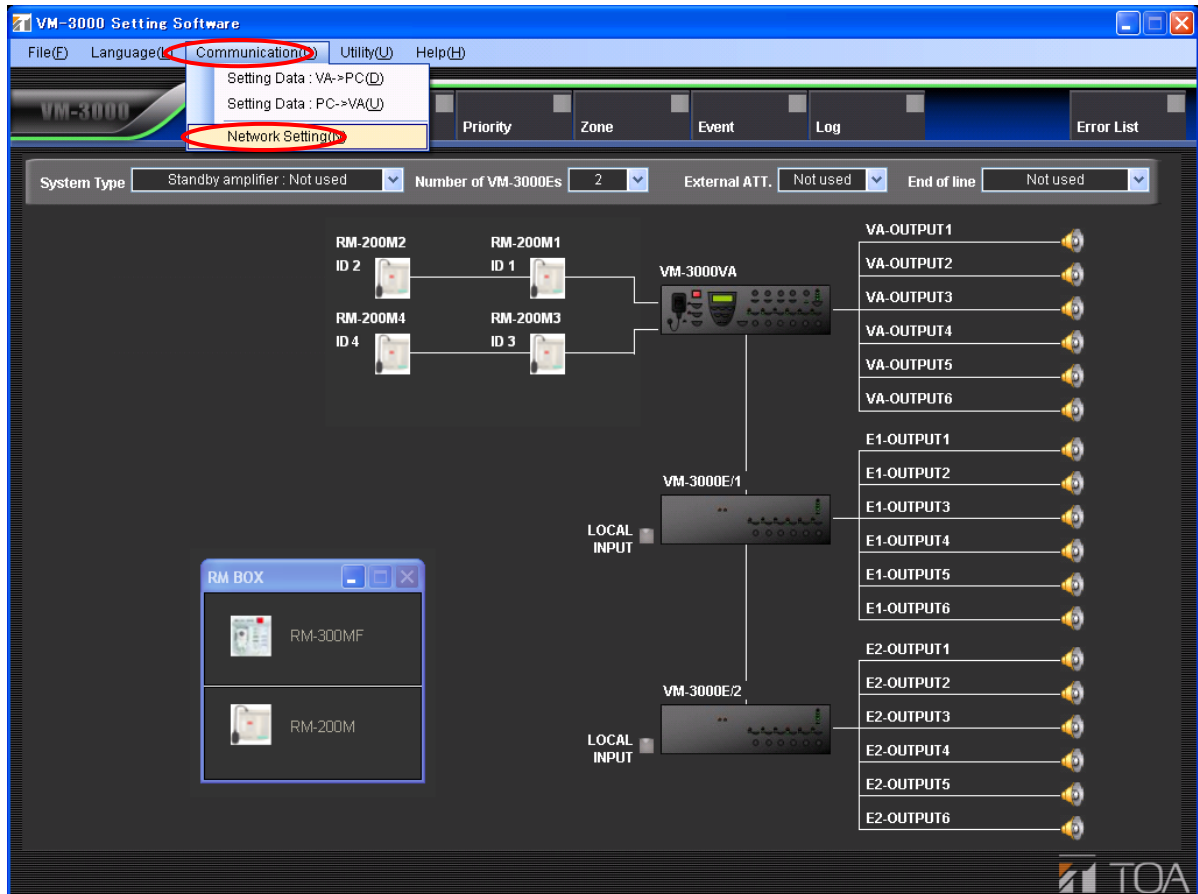
## 13.9. Network Settings between Setting Software and VM-3000VA

Perform network settings (IP address settings) necessary for communication between the setting software and the VM-3000VA.

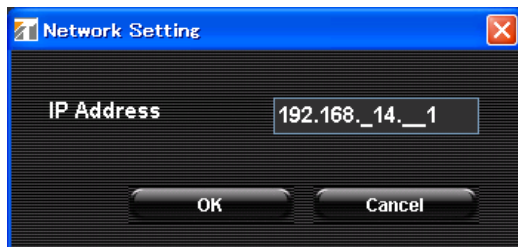
### Note

Be sure to perform this setting in advance when transferring data between the VM-3000VA and a PC.

**Step 1.** Select "Communication → Network Setting" from the menu bar of the Setting Software screen.



The network setting screen is displayed.



**Step 2.** Set the VM-3000VA's IP address. (Default IP address: 192.168.14.1)  
For details, please contact a network administrator.

**Step 2.** Click the "OK" button.

The display reverts to the original screen.

To cancel the setting, click the "Cancel" button.

**Note**

The following dialog is displayed if connections between the VM-3000VA and the PC are not correctly made or if the network setting is not correctly performed. In such cases, click the "OK" button and correctly reconnect the VM-3000VA to the PC or remedy the incorrect network setting.



## 13.10. Transferring Data Edited by PC between the VM-3000VA and a PC

Data edited with a PC can be written into the VM-3000VA or the same data written into the VM-3000VA can be loaded into the PC.

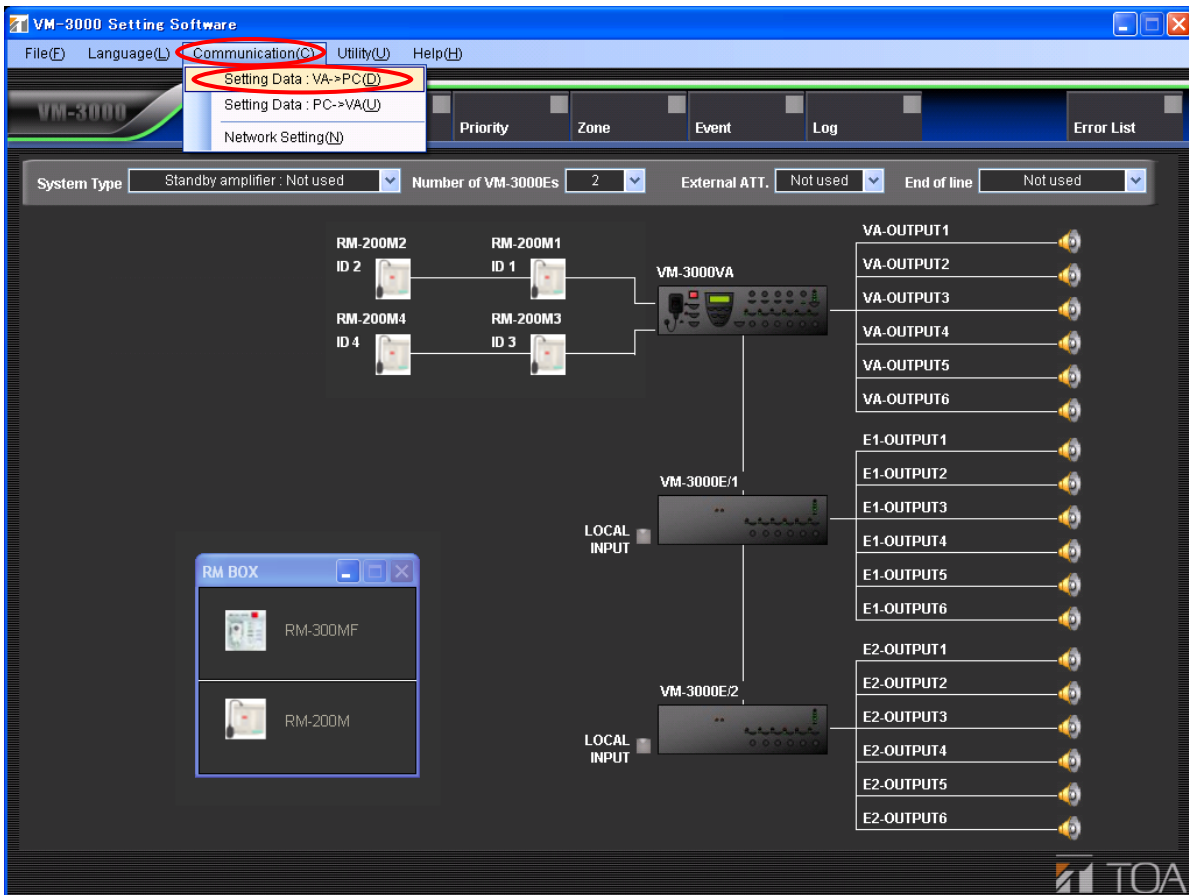
### Notes

- Data edited using the VM-3000VA's LCD screen cannot be transferred. Only the data that has been set using the PC setting software can be transferred.
- To use this function, be sure to perform network settings in advance ([page 70](#)).
- To transfer set data, the setting software must be operated. Also, operations for transferring the set data are required on the VM-3000VA side with a PC connected to the VM-3000VA. (For details, please read the separately issued instruction manual.)

The following are operations based on the setting software.

### 13.10.1. Loading set VM-3000VA data into a PC

Select "Communication → Setting Data: VA->PC" from the menu bar of the Setting Software screen.



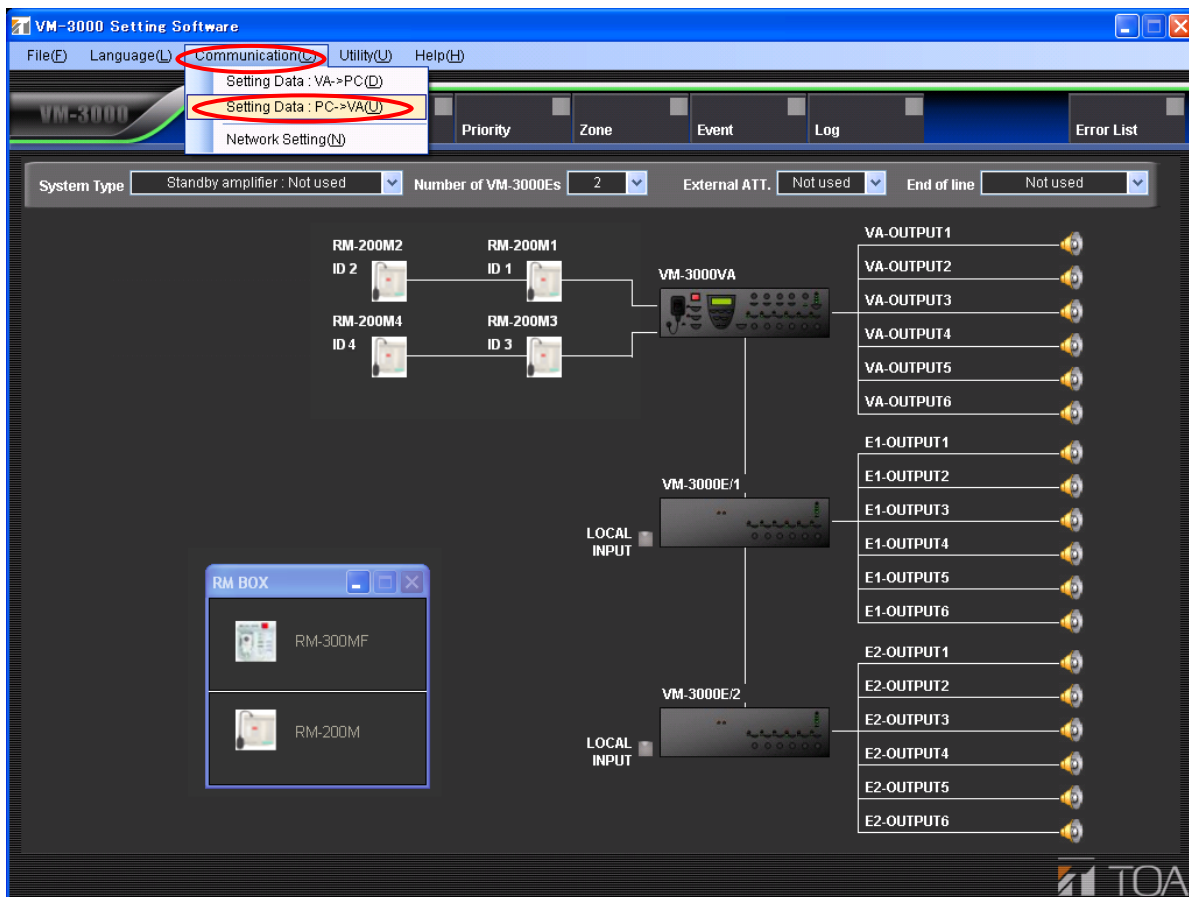
The transferred setting content is displayed on the current setting screen when the data has been transferred. In this event, the VM-3000VA's LCD screen displays as follows:

**TRANSMITTING  
COMPLETE**



### 13.10.2. Writing PC-edited data into the VM-3000VA

Select "Communication → Setting Data: PC->VA" from the menu bar of the Setting Software screen.



Currently displayed set data is written into the VM-3000VA.  
The VM-3000VA's LCD screen displays as follows when the data has been transferred.



### 13.11. Transferring EV Message Files between the VM-3000VA and a PC

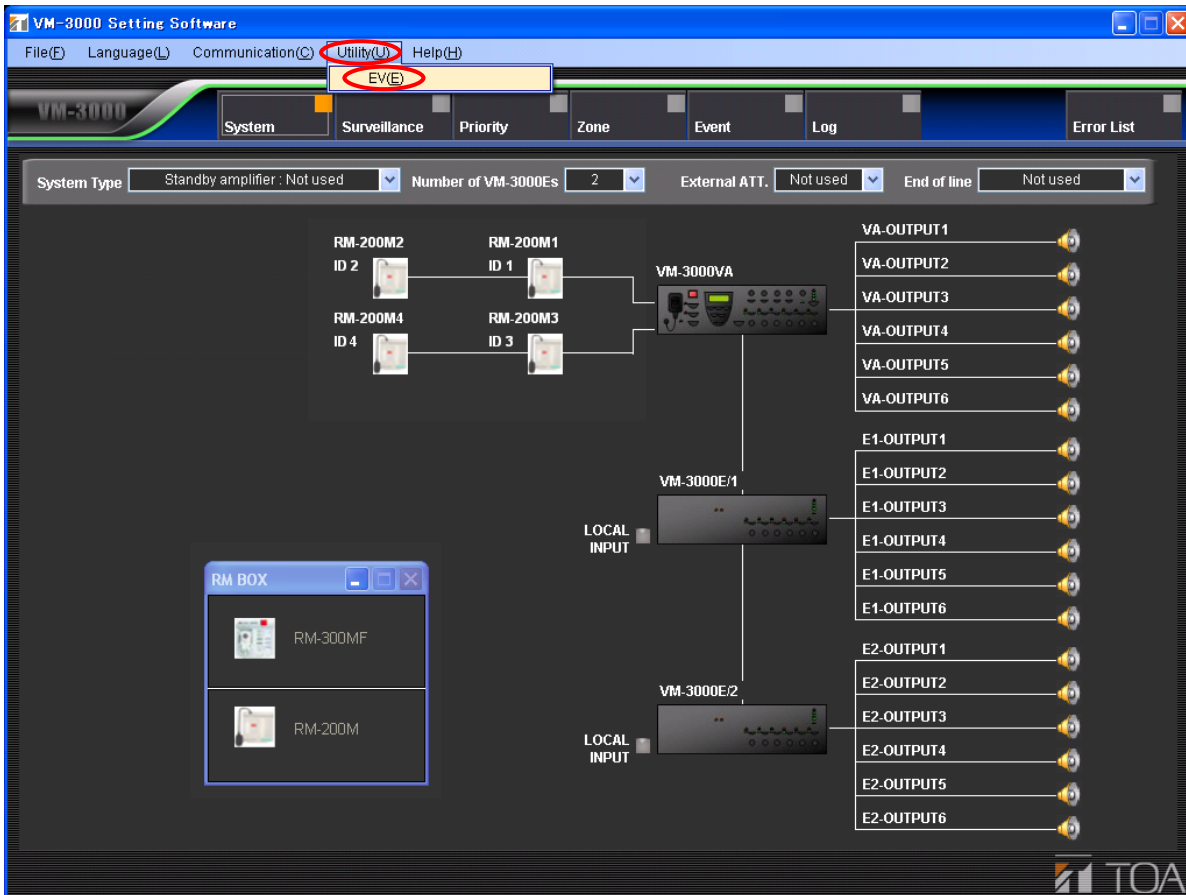
EV message files to be used by the VM-3000VA can be written into the VM-3000VA from a PC or loaded into the PC from the VM-3000VA.

#### Notes

- This function is independent from the set data transfer function (page 72).
- To use this function, be sure to perform network settings in advance (page 70).
- To transfer set data, the setting software must be operated. Also, operations for transferring the set data are required on the VM-3000VA side with a PC connected to the VM-3000VA. (For details, please read "Configuration Settings" in the separately issued instruction manual.)

#### 13.11.1. EV file registration screen transfer operation

Select "Utility → EV" from the menu bar of the Setting Software screen.



The EV message file registration screen is displayed.  
All fields on the EV screen are empty.



Shown below are explanations of each indication on the screen (buttons are excluded from this explanation):

- (1) General: General broadcast message
  - (2) Emergency: Emergency broadcast message
  - (3) EV: The EV message number or its name
  - (4) File Select: If the message is registered in the PC, the message filename is displayed.
  - (5) Play/Stop: If the message is registered, both the "Play" and "Stop" buttons are displayed.
  - (6) PC>VM-3000VA: Registering the message displays the transfer button. (The delete button is displayed when the message is not registered.)
  - (7) Size: Displays the size of each message file.
  - (8) Total Size: Shows the sum of all registered message files.
- Note**  
The maximum total size of EV message files that can be used with the VM-3000VA is 60 MB.

The function of each button is explained as follows on the assumption that EV messages have been registered in a PC.



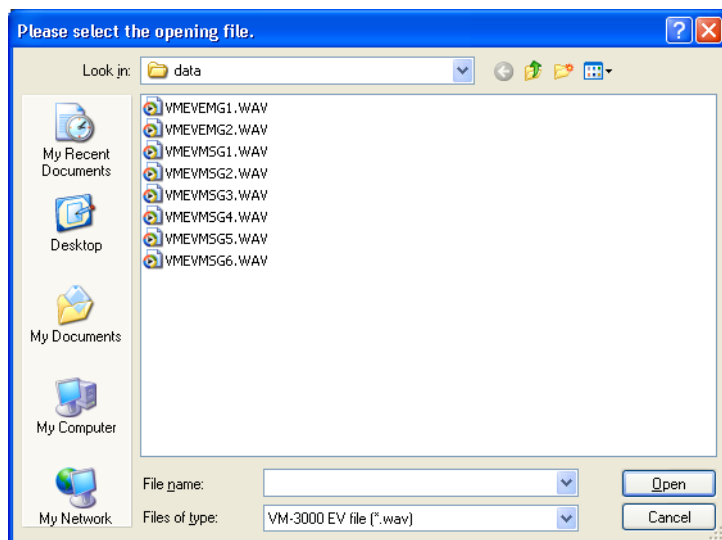
**(1) "VM-3000VA->PC" button**

Reads the VM-3000VA's registered EV message files into the PC's message file registration screen. After reading is complete, the indication as shown above is displayed. In this event, the indication shown at right is displayed on the VM-3000VA's LCD screen.

**TRANSMITTING  
COMPLETE**

**(2) "Reference" button**

Registers the EV message files in the PC's message file registration screen. Pressing this button displays a message file selection dialog.



Designate the folder in which the message files are stored and select the message file(s) to be used.

**Notes**

- Only WAV-format PCM 48kHz monaural files can be used for EV messages.
- Any filename can be assigned to an EV message. However, if any message file is transferred to the VM-3000VA and then read into a PC, its filename is automatically changed to the default name as follows:
  - General EV message 1: VMEVMSG1.WAV
  - General EV message 2: VMEVMSG2.WAV
  - General EV message 3: VMEVMSG3.WAV
  - General EV message 4: VMEVMSG4.WAV
  - General EV message 5: VMEVMSG5.WAV
  - General EV message 6: VMEVMSG6.WAV
  - Evacuation message: VMEVEMG1.WAV
  - Alert message: VMEVEMG2.WAV

**(3) "Reset" button**

Deletes the EV message file registered in the PC.

**(4) "Play" button**

Play backs the EV message(s) registered in the PC.

The message(s) can be heard by means of the PC speaker or headphones connected to the PC.

**(5) "Stop" button**

Stops the EV message played back using the "Play" button (4).

**(6) "PC->VM-3000VA" button**

Transfers individual EV message files to the VM-3000VA.

**Note**

If an EV message file with the same message number already exists in the VM-3000VA, it will be overwritten.

**(7) "Delete" button**

This button is displayed when there is no message file on the message file registration screen (i.e. when the [File Select] box is blank).

Pressing this button causes this EV message number file to be deleted from the VM-3000VA.

**Note**

To delete message files read into the screen, first press the "Reset" button to delete the message from the registration screen, then press the "Delete" button.

**(8) "PC->VM-3000VA" button**

Simultaneously transfers all EV message files registered on this screen to the VM-3000VA.

**Attention!**

Transferring no audio file registered on the screen will erase all existing audio files in the VM-3000VA.

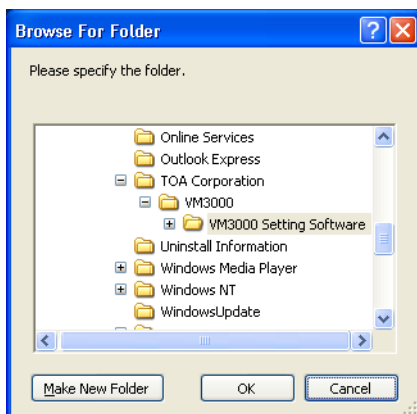
The following indication is displayed on the VM-3000VA's LCD screen after transfer completion.



**(9) "Save" button**

Saves all EV message files registered on this screen to the folder designated by the PC.

Pressing this button displays the folder selection dialog.



Select the folder the files are to be saved to, then click the "OK" button.

**(10) "Close" button**

Closes the message file registration screen.

### 13.11.2. Simultaneous EV message registration

[When no EV message files are registered in the VM-3000VA (default setting)]

- Step 1.** Press the "Reference" button.  
Select the EV message file from those stored in the PC, then its filename is displayed in the "File Select" field on the setting screen.
- Step 2.** Display all message files to be registered on the PC setting screen.
- Step 3.** Press the "PC->VM-3000VA" button located in the lower part of the screen.  
This allows all EV message files displayed on the screen to be read into the VM-3000VA at once.

[When the EV message file has already been registered in the VM-3000VA (registration by overwriting)]

- Step 1.** Press the "VM-3000VA->PC" button located in the lower part of the screen.  
The EV message files registered in the VM-3000VA are loaded into the PC's setting screen.
- Step 2.** Edit and update the message file(s) to be changed.
- Step 3.** Press the "PC->VM-3000VA" button located in the lower part of the screen.  
All EV message files displayed on the screen are simultaneously read into the VM-3000VA.

### 13.11.3. Individual EV message file registration

- Step 1.** Press the "VM-3000VA->PC" button located in the lower part of the screen.  
The EV message files registered in the VM-3000VA are loaded into the PC's setting screen.
- Step 2.** Edit and update the message file to be changed.
- Step 3.** Press the individual "PC->VM-3000VA" button for the updated EV message file.  
The message file is individually written into the VM-3000VA.

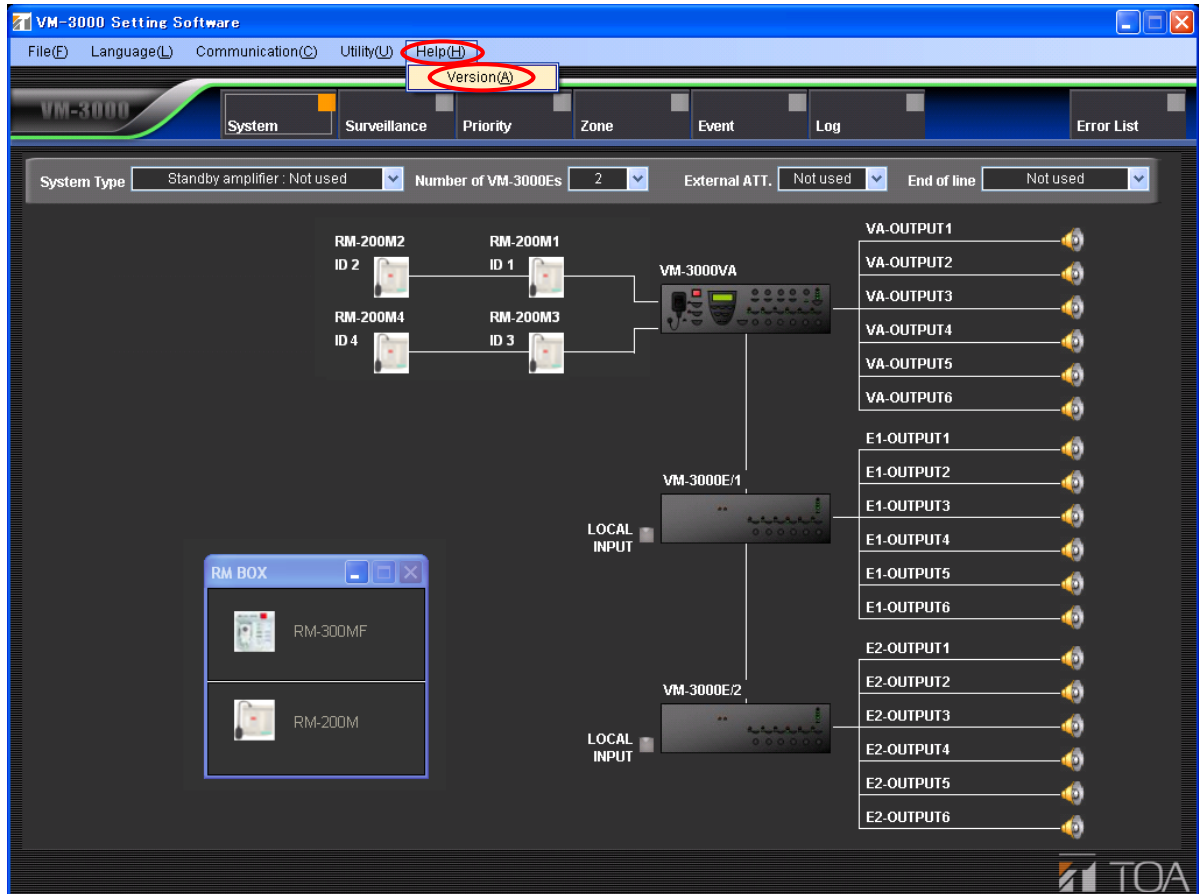
### 13.11.4. Individual EV message file erasure

- Step 1.** Press the "VM-3000VA->PC" button.  
The EV message files registered in the VM-3000VA are loaded into the PC's setting screen.
- Step 2.** Press the "Reset" button for the EV message file.  
The EV message file is deleted from the PC's setting screen.
- Step 3.** Press the "Delete" button.  
The EV message file is deleted from the VM-3000VA.

## 13.12. Setting Software Version Display

The version of the setting software can be displayed.

**Step 1.** Select "Help → Version" from the menu bar of the Setting Software screen.



The setting software's version is displayed.



**Step 2.** Click the "Close" button.

